

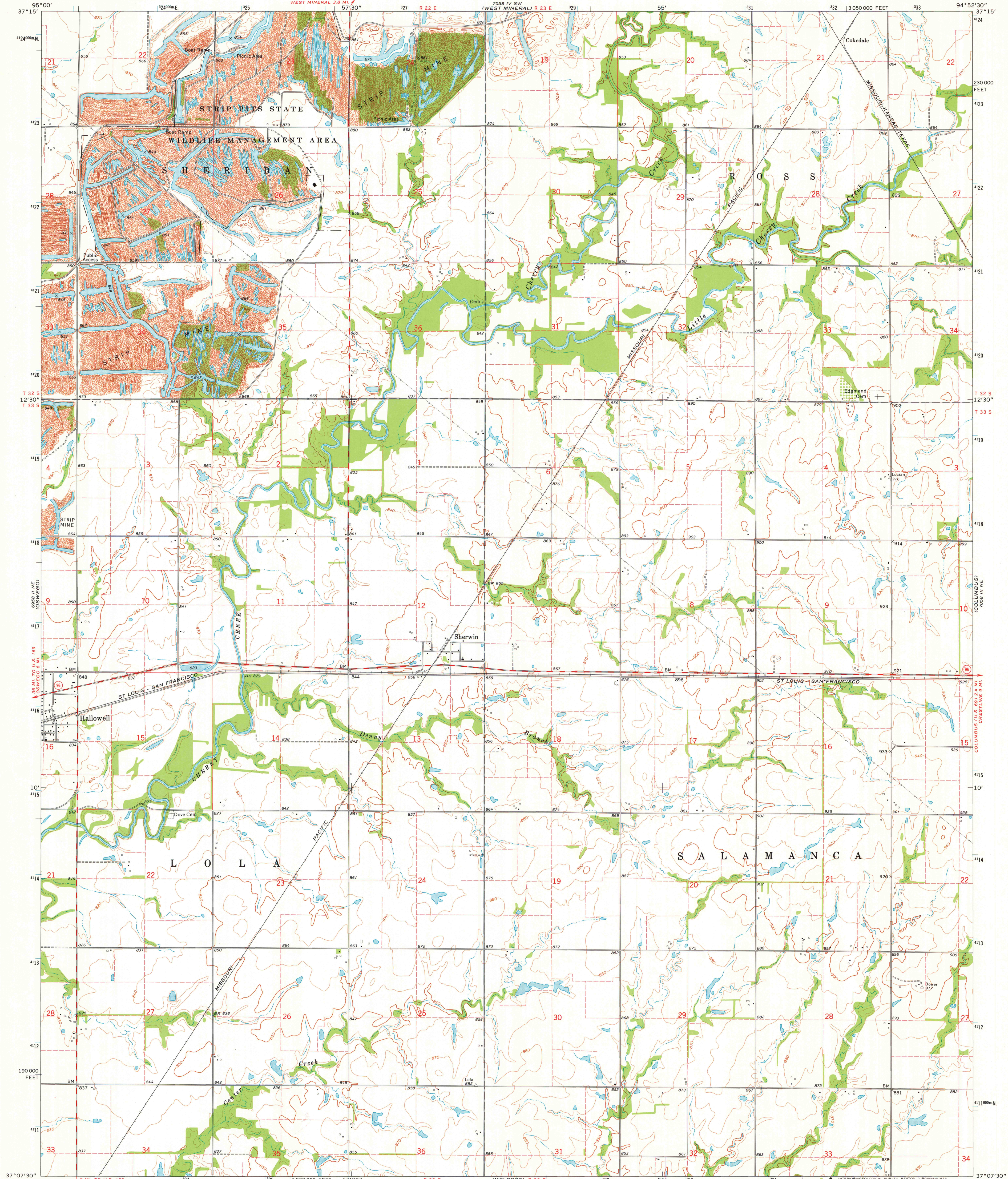
8928 1/4 SE (COLUMBUS)

UNITED STATES
DEPARTMENT OF THE INTERIOR
GEOLOGICAL SURVEY

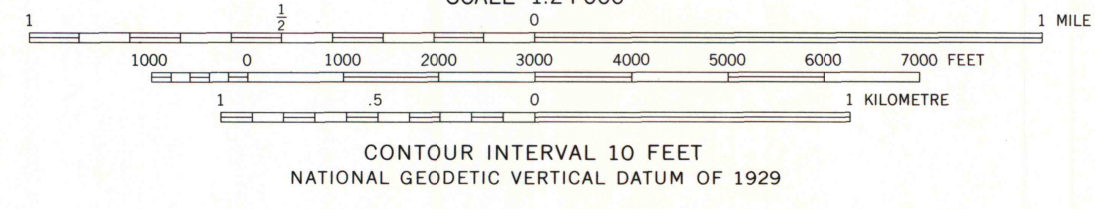
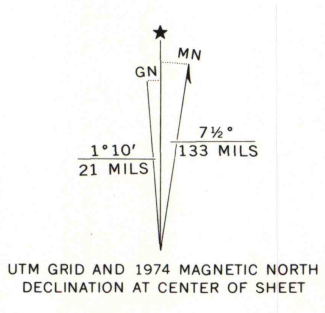
STATE OF KANSAS

HALLOWELL QUADRANGLE
KANSAS—CHEROKEE CO.
7.5 MINUTE SERIES (TOPOGRAPHIC)
NW 4 COLUMBUS 15' QUADRANGLE

7058 1/4 SE (CHEROKEE)



Mapped, edited, and published by the Geological Survey
in cooperation with State of Kansas agencies
Control by USGS and NOS/NOAA
Topography by photogrammetric methods from aerial
photographs taken 1973. Field checked 1974
Projection and 10,000-foot grid ticks: Kansas coordinate
system, south zone (Lambert conformal conic)
1000-metre Universal Transverse Mercator grid ticks,
zone 15, shown in blue. 1927 North American datum
Fine red dashed lines indicate selected fence and field lines where
generally visible on aerial photographs. This information is unchecked



ROAD CLASSIFICATION

Primary highway, hard surface	Light-duty road, hard or improved surface
Secondary highway, hard surface	Unimproved road
Interstate Route	U. S. Route
	State Route

**MAP AND AIR PHOTO
LIBRARY**

FEB 14 1976

HALLOWELL, KANS.
NW 4 COLUMBUS 15' QUADRANGLE
N3707.5-W9452.5/7.5
1974
AMS 7058 III NW—SERIES V878

THIS MAP COMPLIES WITH NATIONAL MAP ACCURACY STANDARDS
FOR SALE BY U.S. GEOLOGICAL SURVEY, DENVER, COLORADO 80225, OR RESTON, VIRGINIA 22092
AND BY THE STATE GEOLOGICAL SURVEY, LAWRENCE, KANSAS 66044
A FOLDER DESCRIBING TOPOGRAPHIC MAPS AND SYMBOLS IS AVAILABLE ON REQUEST

8928 1/4 SE (COLUMBUS)

7058 1/4 SE (CHEROKEE)