

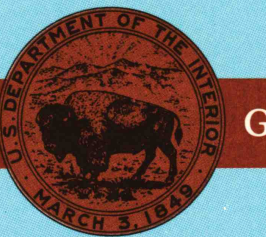
Healy
KANSAS

1:100 000-scale metric
topographic map



30 X 60 MINUTE QUADRANGLE
SHOWING

- Contours and elevations in meters
- Highways, roads and other manmade structures
- Water features
- Woodland areas
- Geographic names



GEOLOGICAL SURVEY

1985
PHOTOINSPECTED 1985

Produced by the United States Geological Survey

Compiled from USGS 1:24 000-scale topographic maps dated 1965-1981. Planimetry revised from aerial photographs taken 1981 and other source data. Revised information not field checked. Map edited 1985.
Projection and 10 000-meter grid, zone 14, Universal Transverse Mercator
25 000-foot grid ticks based on Kansas coordinate system, north and south zones
1927 North American Datum
To place on the predicted North American Datum 1983, move the projection lines 5 meters north and 36 meters east.
There may be private inholdings within the boundaries of the National or State reservations shown on this map.

Map photoinspected using 1985 photographs
No major culture or drainage changes found
CONTOUR INTERVAL 5 METERS
NATIONAL GEODETIC VERTICAL DATUM OF 1929
ELEVATIONS SHOWN TO THE NEAREST METER

THIS MAP COMPLIES WITH NATIONAL MAP ACCURACY STANDARDS

CONVERSION TABLE		DECLINATION DIAGRAM	ADJOINING MAPS		
Meters	Feet		1	2	3
1	3.2808		1	2	3
2	6.5616		4	5	
3	9.8424		6	7	8
4	13.1232				
5	16.4040		1	2	3
6	19.6848		4	5	
7	22.9656		6	7	8
8	26.2464		1	2	3
9	29.5272		4	5	
10	32.8080		6	7	8
To convert meters to feet multiply by 3.2808		UTM grid convergence (GM) and 1985 magnetic declination (MD) at center of map	1	2	3
To convert feet to meters multiply by 0.3048		Diagram is approximate	4	5	
			6	7	8

FOR SALE BY U.S. GEOLOGICAL SURVEY
DENVER, COLORADO 80225, OR RESTON, VIRGINIA 22092



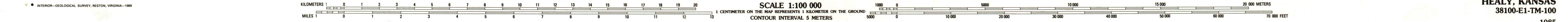
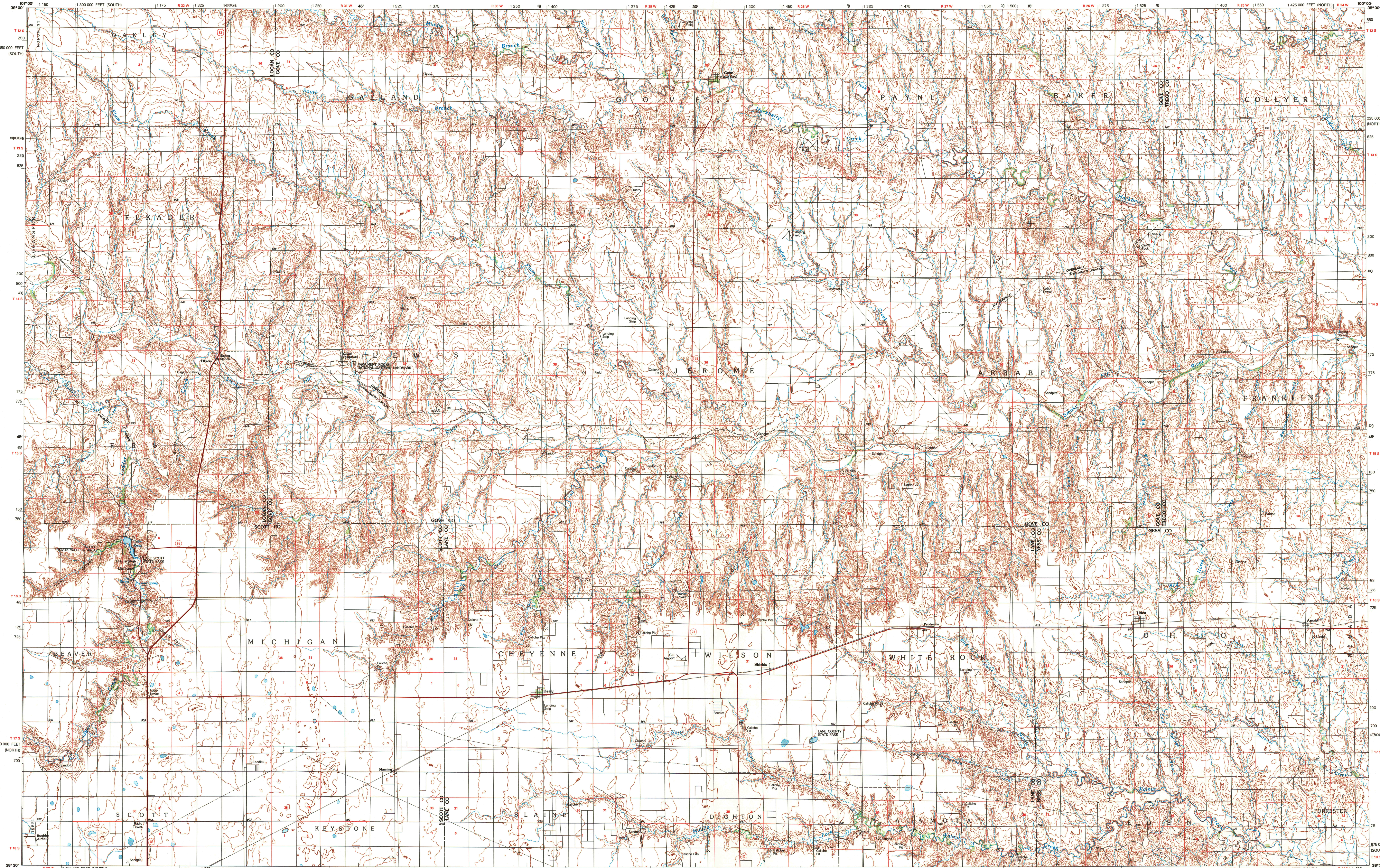
Primary highway, hard surface.....	
Secondary highway, hard surface.....	
Light duty road, principal street, hard or improved surface.....	
Other road or street; trail.....	
Route marker: Interstate, U.S., State.....	
Railroad: standard gauge, narrow gauge.....	
Bridge: overpass, underpass.....	
Tunnel: road, railroad.....	
Built up area, locality, elevation.....	
Airport: landing field, landing strip.....	
National boundary.....	
State boundary.....	
County boundary.....	
National or State reservation boundary.....	
Land grant boundary.....	
U.S. public lands survey: range, township, section.....	
Range, township, section line: projected.....	
Power transmission line; pipeline.....	
Dam; dam with lock.....	
Cemetery; building.....	
Windmill; water well; spring.....	
Mine shaft; adit or cave; mine, quarry; gravel pit.....	
Campground; picnic area; U.S. location monument.....	
Ruin; cliff dwelling.....	
Distorted surface: strip mine, lava, sand.....	
Contours: index; intermediate; supplementary.....	
Bathymetric contours: index; intermediate.....	
Stream, lake, perennial; intermittent.....	
Rapids, large and small; falls, large and small.....	
Area to be submerged; marsh, swamp.....	
Land subject to controlled inundation; woodland.....	
Scrub; mangrove.....	
Ordinary; vineyard.....	

A pamphlet describing topographic maps is available on request

HEALY, KANSAS

38100-E1-TM-100

1985
PHOTOINSPECTED 1985



SCALE 1:100 000
1 CENTIMETER ON THE MAP REPRESENTS 1 KILOMETER ON THE GROUND
CONTOUR INTERVAL 5 METERS