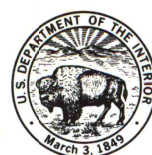


6658 1 NE  
(CAMBRIDGE NE)

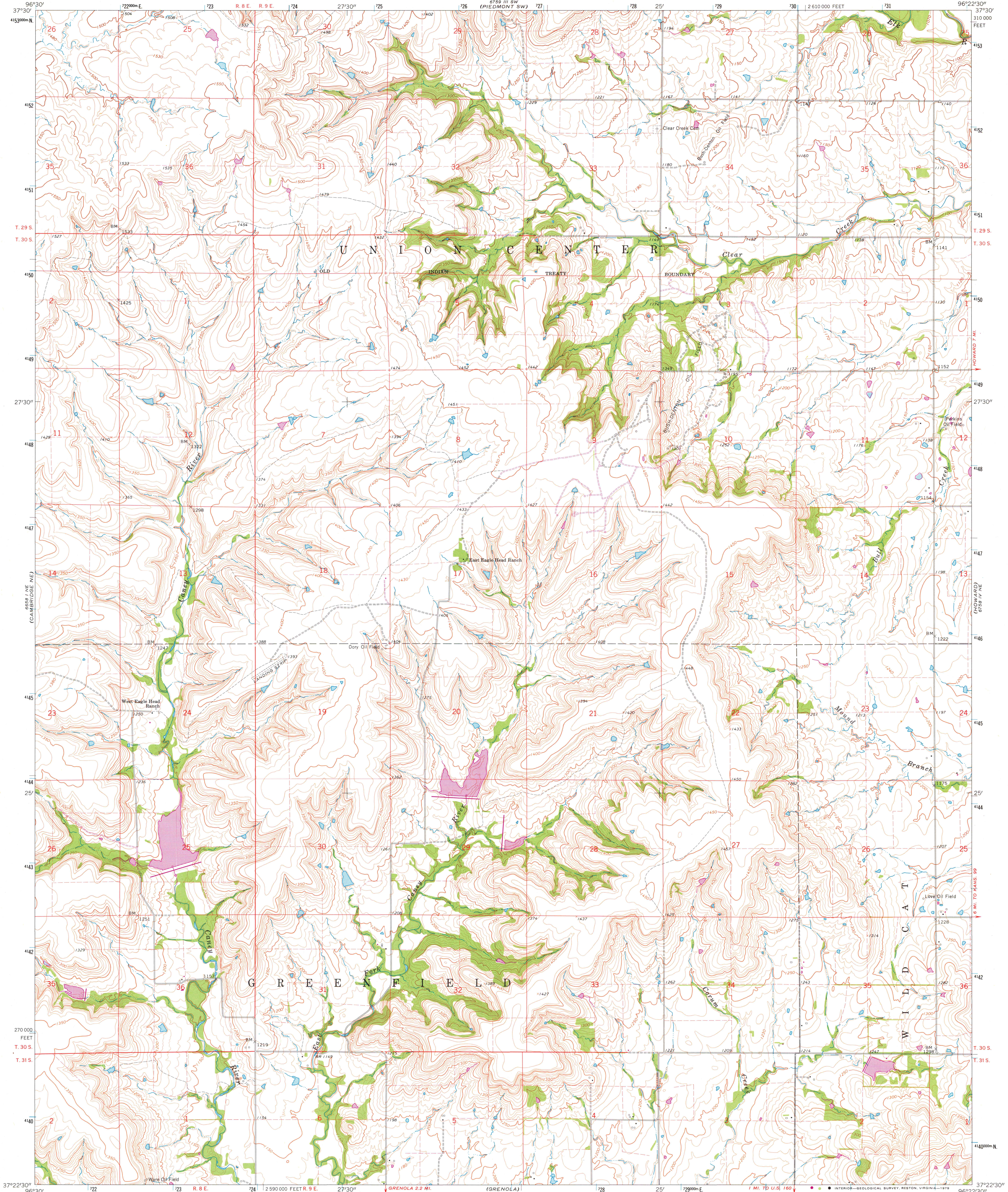
UNITED STATES  
DEPARTMENT OF THE INTERIOR  
GEOLOGICAL SURVEY



STATE OF KANSAS

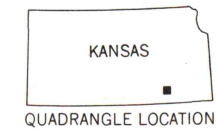
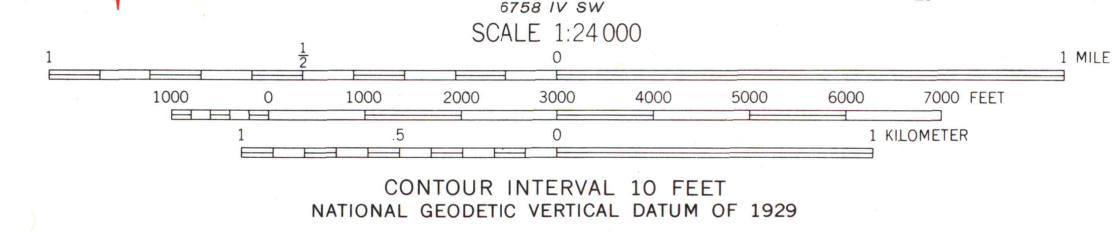
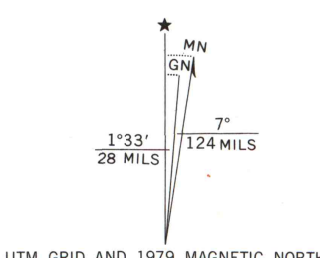
HOWARD NW QUADRANGLE  
KANSAS—ELK CO.  
7.5 MINUTE SERIES (TOPOGRAPHIC)

6758 1 NE  
(PIEDMONT NE)



6658 1 NE  
(CAMBRIDGE NE)

Mapped, edited, and published by the Geological Survey  
in cooperation with State of Kansas agencies  
Control by USGS and USC&GS  
Topography by photogrammetric methods from aerial  
photographs taken 1962. Field checked 1964  
Polyconic projection. 1927 North American datum  
10,000-foot grid based on Kansas coordinate system, south zone  
1000-meter Universal Transverse Mercator grid ticks,  
zone 14, shown in blue  
Fine red dashed lines indicate selected fence and field lines where  
generally visible on aerial photographs. This information is unchecked  
Revisions shown in purple compiled from aerial photographs  
taken 1976 and other source data. This information not  
field checked. Map edited 1979



MAP AND AIR PHOTO  
LIBRARY

JUN 13 1979

University of Wisconsin  
Madison

ROAD CLASSIFICATION  
Light-duty ————— Unimproved dirt —————

HOWARD NW, KANS.  
N3722.5—W9622.5/7.5

1964  
PHOTOREVISED 1979  
AMS 6758 IV NW—SERIES V878

6758 1 NE  
(PIEDMONT NE)