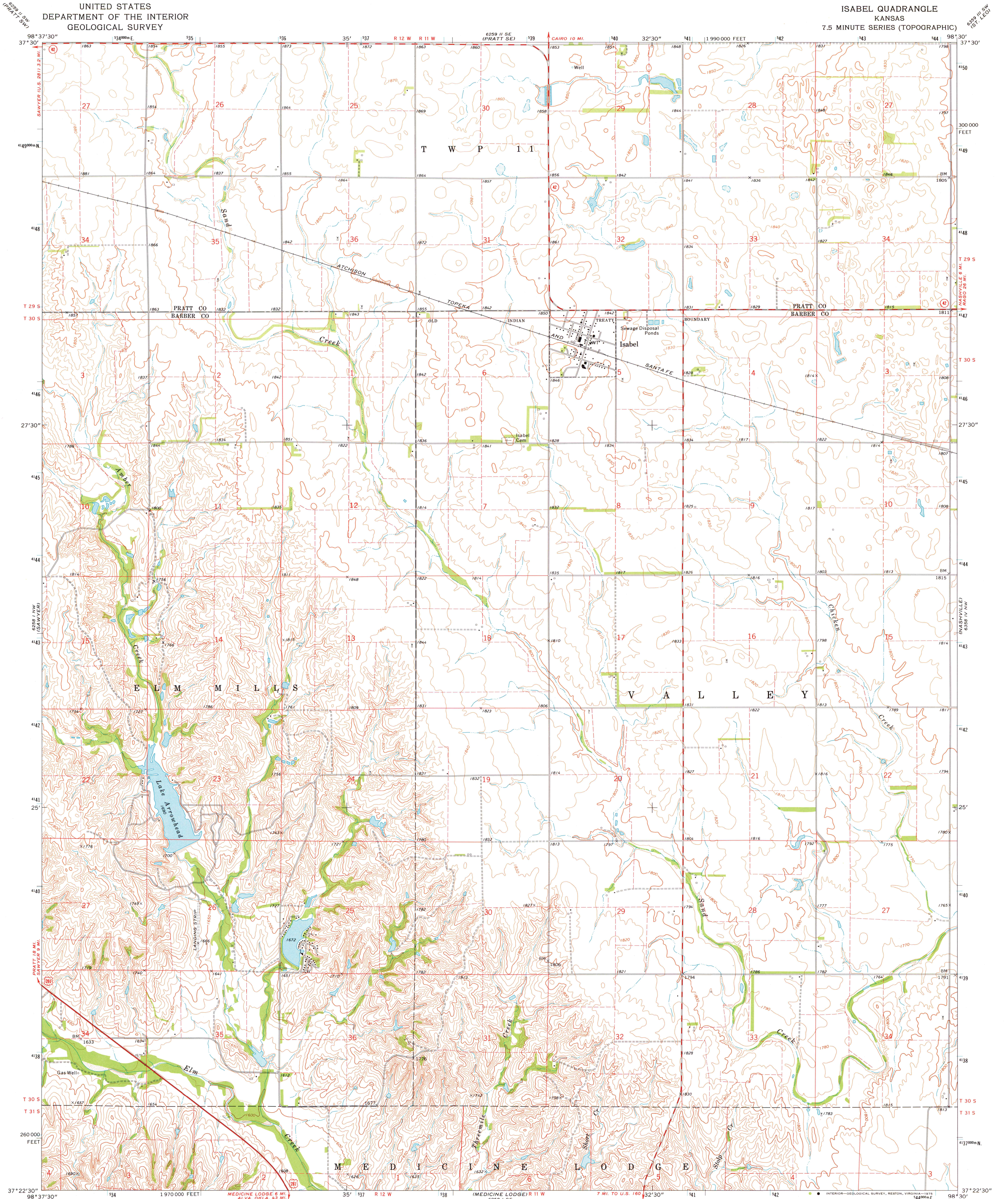


UNITED STATES  
DEPARTMENT OF THE INTERIOR  
GEOLOGICAL SURVEY

ISABEL QUADRANGLE  
KANSAS  
7.5 MINUTE SERIES (TOPOGRAPHIC)

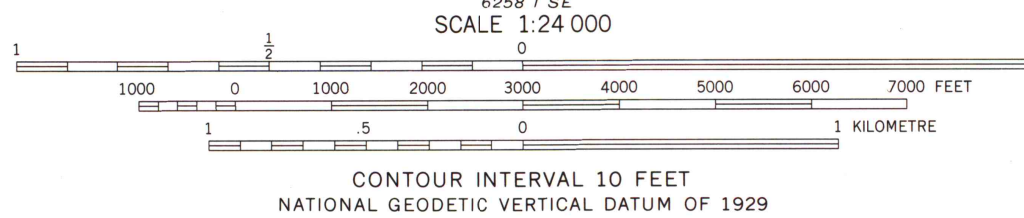
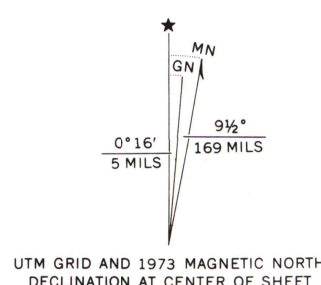


Mapped, edited, and published by the Geological Survey  
Control by USGS and NOS/NOAA

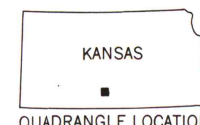
Topography by photogrammetric methods from aerial  
photographs taken 1971. Field checked 1973

Projection and 10,000-foot grid ticks: Kansas coordinate  
system, south zone (Lambert conformal conic)  
1000-metre Universal Transverse Mercator grid ticks,  
zone 14, shown in blue. 1927 North American datum

Fine red dashed lines indicate selected fence and field lines where  
generally visible on aerial photographs. This information is unchecked



ROAD CLASSIFICATION  
Primary highway, hard surface  
Secondary highway, hard surface  
Unimproved road  
Interstate Route  
U. S. Route  
State Route



MAP AND AIR PHOTO  
LIBRARY  
FEB 14 1976

ISABEL, KANS.  
N3722.5-W9830/7.5  
1973

University of Wisconsin

AMS 6258 I NE-SERIES V878