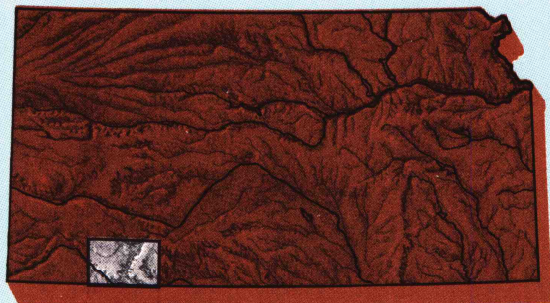


Liberal  
KANSAS-OKLAHOMA

1:100 000-scale metric  
topographic map



30 X 60 MINUTE QUADRANGLE  
SHOWING

- Contours and elevations in meters
- Highways, roads and other manmade structures
- Water features
- Woodland areas
- Geographic names



GEOLOGICAL SURVEY

1985

Produced by the United States Geological Survey  
Compiled from USGS 1:250 000-scale topographic maps dated 1965-1983. Planimetry revised from aerial photographs taken 1981 and other source data. Revised information not field checked. Map edited 1985.  
Projection and 10 000-meter grid, zone 14, Universal Transverse Mercator.  
25 000-foot grid ticks based on Kansas coordinate system, south zone.  
1927 North American Datum.  
To place on the predicted North American Datum 1983, move the projection lines 1 meter north and 36 meters east.  
There may be private inholdings within the boundaries of the National or State reservations shown on this map.

CONTOUR INTERVAL 10 METERS  
SUPPLEMENTARY CONTOUR INTERVAL 5 METERS  
NATIONAL GEODESIC VERTICAL DATUM OF 1929  
ELEVATIONS SHOWN TO THE NEAREST METER

THIS MAP COMPLIES WITH NATIONAL MAP ACCURACY STANDARDS

CONVERSION TABLE		DECLINATION DIAGRAM	ADJOINING MAPS		
Meters	Feet		1	2	3
1	3.2808		1	2	3
2	6.5617		4	5	6
3	9.8425		7	8	
4	13.1234				
5	16.4042				
6	19.6850				
7	22.9659				
8	26.2467				
9	29.5276				
10	32.8084				
To convert meters to feet multiply by 3.2808		UTM grid convergence (GN) and 1983 magnetic declination (M) at center of map. Diagram is approximate.			
To convert feet to meters multiply by 0.3048					

FOR SALE BY U.S. GEOLOGICAL SURVEY  
DENVER, COLORADO 80225, OR RESTON, VIRGINIA 22092

U.S. Regional  
Depository Copy  
DO NOT DISCARD

Topographic Map Symbols

Primary highway, hard surface.....	
Secondary highway, hard surface.....	
Light duty road, principal street, hard or improved surface.....	
Other road or street; trail.....	
Route marker: Interstate, U.S., State.....	
Railroad: standard gauge; narrow gauge.....	
Bridge: overpass; underpass.....	
Tunnel: road; railroad.....	
Built up area; locality; elevation.....	
Airport; landing field; landing strip.....	
National boundary.....	
State boundary.....	
County boundary.....	
National or State reservation boundary.....	
Land grant boundary.....	
U.S. public lands survey: range, township; section.....	
Range, township; section line; protracted.....	
Power transmission line; pipeline.....	
Dam; dam with lock.....	
Cemetery; building.....	
Windmill; water well; spring.....	
Mine shaft; adit or cave; mine, quarry; gravel pit.....	
Campground; picnic area; U.S. location monument.....	
Ruin; cliff dwelling.....	
Disturbed surface: strip mine, lava, sand.....	
Contours: index; intermediate; supplementary.....	
Bathymetric contours: index; intermediate.....	
Stream, lake: perennial; intermittent.....	
Rapids, large and small; falls, large and small.....	
Area to be submerged; marsh, swamp.....	
Land subject to controlled inundation; woodland.....	
Scrub; mangrove.....	
Orchard; vineyard.....	

A pamphlet describing topographic maps is available on request

LIBERAL, KANSAS-OKLAHOMA

37100-A1-TM-100

1985

ARTHUR H. ROBINSON MAP LIBRARY

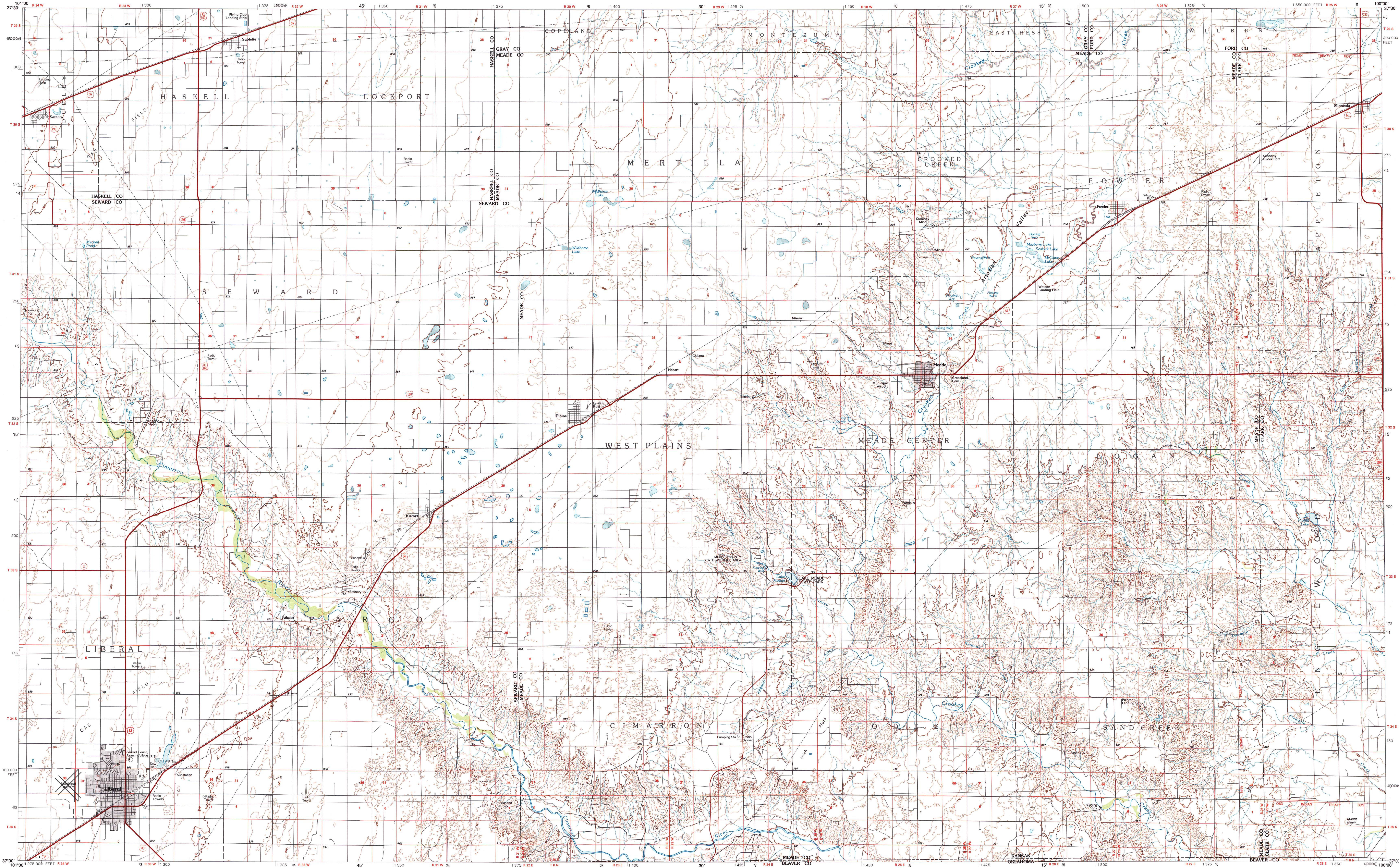
University of Wisconsin-Madison

OCT 11 1988

BO06 - 9/8

LIBERAL, KANSAS-OKLAHOMA

30x60 MINUTE SERIES (TOPOGRAPHIC)



• INTERIOR-GEOLOGICAL SURVEY, RESTON, VIRGINIA-1988

KILOMETERS 1 0 1 2 3 4 5 6 7 8 9 10 11 12 13 14 15 16 17 18 19 20

MILES 1 0 1 2 3 4 5 6 7 8 9 10 11 12 13

SCALE 1:100 000

1 CENTIMETER ON THE MAP REPRESENTS 1 KILOMETER ON THE GROUND

CONTOUR INTERVAL 10 METERS  
SUPPLEMENTARY CONTOUR INTERVAL 5 METERS

1000 0 5000 10000 15000 20000 METERS

5000 0 10000 20000 30000 40000 50000 60000 70000 FEET

LIBERAL, KANSAS-OKLAHOMA

37100-A1-TM-100

1985

ARTHUR H. ROBINSON MAP LIBRARY

University of Wisconsin-Madison

OCT 11 1988

BO06 - 9/8