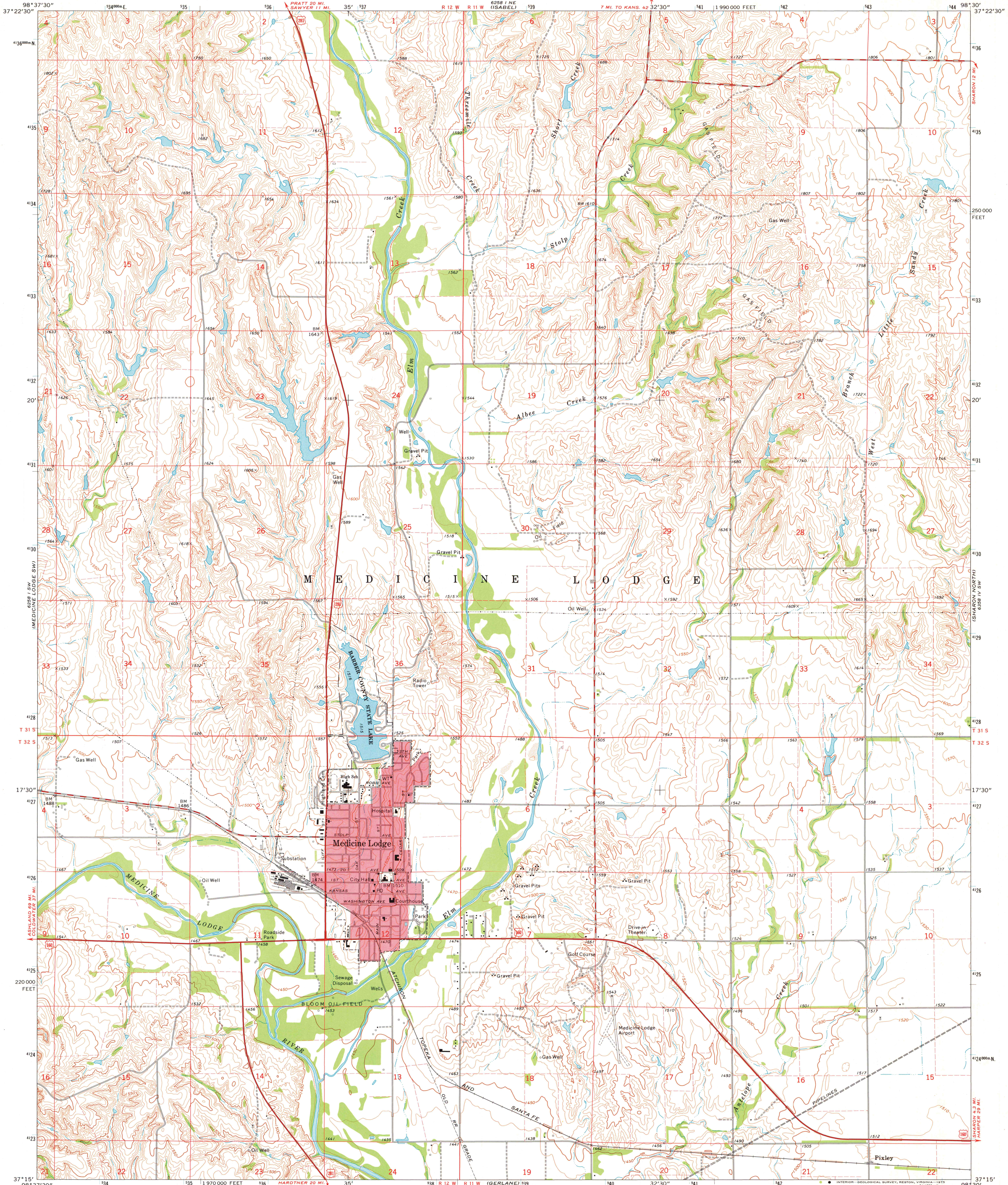


6258 I NW
6258 I NW
6258 I NW

UNITED STATES
DEPARTMENT OF THE INTERIOR
GEOLOGICAL SURVEY

MEDICINE LODGE QUADRANGLE
KANSAS—BARBER CO.
7.5 MINUTE SERIES (TOPOGRAPHIC)

6258 I NW
6258 I NW
6258 I NW



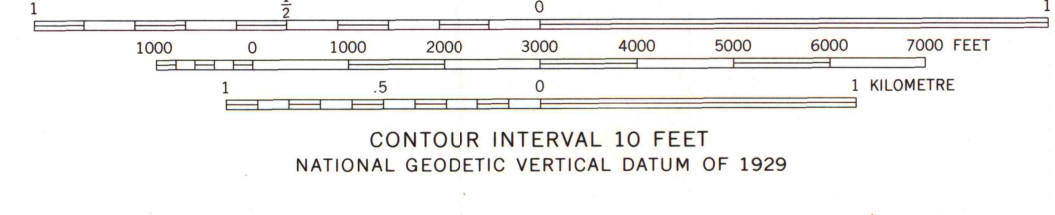
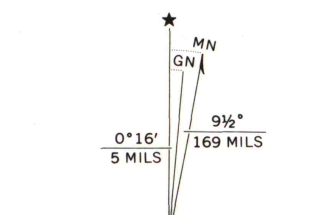
Mapped, edited, and published by the Geological Survey

Control by USGS and NOS/NOAA

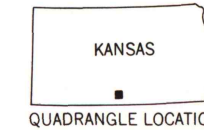
Topography by photogrammetric methods from aerial
photographs taken 1971. Field checked 1973

Projection and 10,000-foot grid ticks: Kansas coordinate
system, south zone (Lambert conformal conic)
1000-metre Universal Transverse Mercator grid ticks,
zone 14, shown in blue. 1927 North American datum

Red tint indicates area in which only landmark buildings are shown
Fine red dashed lines indicate selected fence and field lines where
generally visible on aerial photographs. This information is unchecked



ROAD CLASSIFICATION	
Primary highway, hard surface	Light-duty road, hard or improved surface
Secondary highway, hard surface	Unimproved road
Interstate Route	U. S. Route
	State Route



MAP AND AIR PHOTO
LIBRARY

FEB 14 1976

MEDICINE LODGE, KANS.
N3715—W9830/7.5

1973

AMS 6258 I SE—SERIES V878

University of Wisconsin