

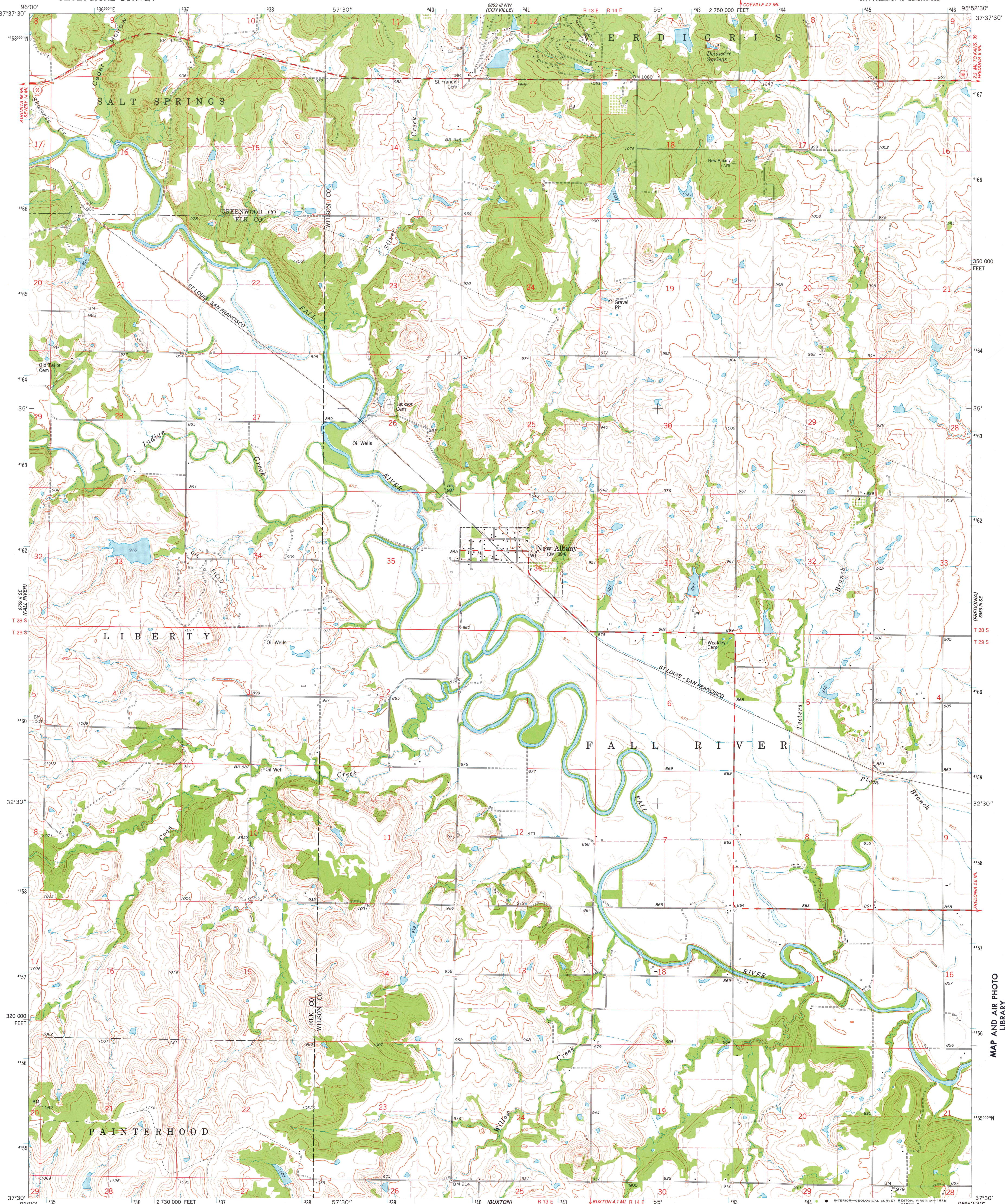
(FALL RIVER LAKE)  
659 I.E.  
659 I.E.

UNITED STATES  
DEPARTMENT OF THE INTERIOR  
GEOLOGICAL SURVEY

STATE OF KANSAS

NEW ALBANY QUADRANGLE  
KANSAS  
7.5 MINUTE SERIES (TOPOGRAPHIC)  
SW/4 FREDONIA 15' QUADRANGLE

659 I.E.  
659 I.E.  
(MODELTOWN)

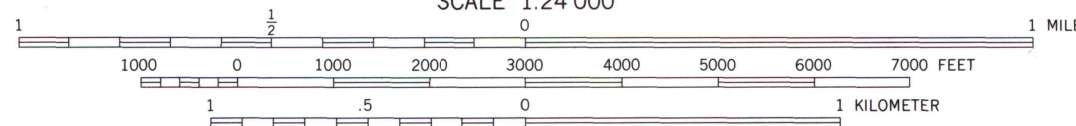
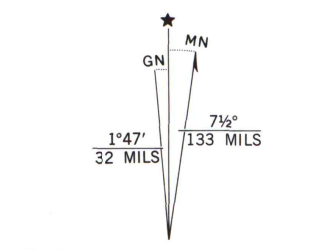


(LONGTOWN)  
659 I.E.

Mapped, edited, and published by the Geological Survey  
in cooperation with State of Kansas agencies  
Control by USGS and NOS/NOAA

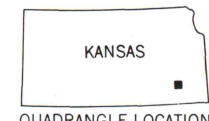
Topography by photogrammetric methods from aerial  
photographs taken 1974. Field checked 1975  
Projection and 10,000-foot grid ticks: Kansas coordinate  
system, south zone (Lambert conformal conic)  
1000-meter Universal Transverse Mercator grid ticks,  
zone 15, shown in blue. 1927 North American datum

Fine red dashed lines indicate selected fence and field lines where  
generally visible on aerial photographs. This information is unchecked



CONTOUR INTERVAL 10 FEET  
DOTTED LINES REPRESENT 5-FOOT CONTOURS  
NATIONAL GEODETIC VERTICAL DATUM OF 1929

THIS MAP COMPLIES WITH NATIONAL MAP ACCURACY STANDARDS  
FOR SALE BY U.S. GEOLOGICAL SURVEY, DENVER, COLORADO 80225, OR RESTON, VIRGINIA 22092  
AND STATE GEOLOGICAL SURVEY, LAWRENCE, KANSAS 66044  
A FOLDER DESCRIBING TOPOGRAPHIC MAPS AND SYMBOLS IS AVAILABLE ON REQUEST



ROAD CLASSIFICATION	
Primary highway, hard surface	Light-duty road, hard or improved surface
Secondary highway, hard surface	Unimproved road
Interstate Route	U.S. Route
	State Route

NEW ALBANY, KANS.  
SW/4 FREDONIA 15' QUADRANGLE  
N3730-W9552.5/7.5

1975

AMS 6859 III SW-SERIES V878

MAP AND AIR PHOTO  
LIBRARY

AUG 10 1978

University of Wisconsin

(LONGTOWN)  
659 I.E.