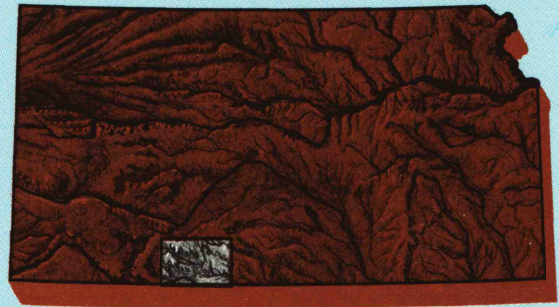


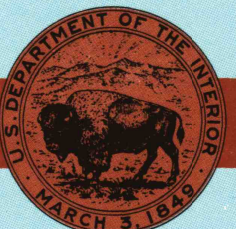
Protection
KANSAS-OKLAHOMA

1:100 000-scale
planimetric map



30 X 60 MINUTE QUADRANGLE
SHOWING

- Elevations in meters
- Highways, roads and other manmade structures
- Water features
- Woodland areas
- Geographic names



GEOLOGICAL SURVEY

1985

Produced by the United States Geological Survey
Compiled from USGS 1:24 000-scale topographic maps dated 1967-1980. Planimetry revised from aerial photographs taken 1981 and other source data. Revised information not field checked. Map edited 1985.

Projection and 10 000-meter grid, zone 14, Universal Transverse Mercator
25 000-foot grid ticks based on Kansas coordinate system, south zone
1927 North American Datum
To place on the predicted North American Datum 1983, move the projection lines 33 meters east
There may be private inholdings within the boundaries of the National or State reservations shown on this map

NATIONAL GEODETIC VERTICAL DATUM OF 1929
ELEVATIONS SHOWN TO THE NEAREST METER

THIS MAP COMPLIES WITH NATIONAL MAP ACCURACY STANDARDS

CONVERSION TABLE		DECLINATION DIAGRAM		ADJOINING MAPS			
Meters	Feet	<div>★ GN Mv</div>		1	2	3	
1	3.2808	<div>0°16' 5" 5 MILS</div> <div>151 MILS</div>	<div>0°16' 5" 5 MILS</div>				
2	6.5617						
3	9.8425						
4	13.1234						
5	16.4042						
6	19.6850						
7	22.9659						
8	26.2467						
9	29.5275						
10	32.8084						
To convert meters to feet multiply by 3.2808		UTM grid convergence multiply by 0.2580		1 Dodge City 2 Kinsley 3 Pratt 4 Liberal 5 Medicine Lodge 6 Beaver 7 Buffalo 8 Alva			
To convert feet to meters multiply by 0.3048		Diagram is approximate					

FOR SALE BY U.S. GEOLOGICAL SURVEY
DENVER, COLORADO 80225, OR RESTON, VIRGINIA 22092



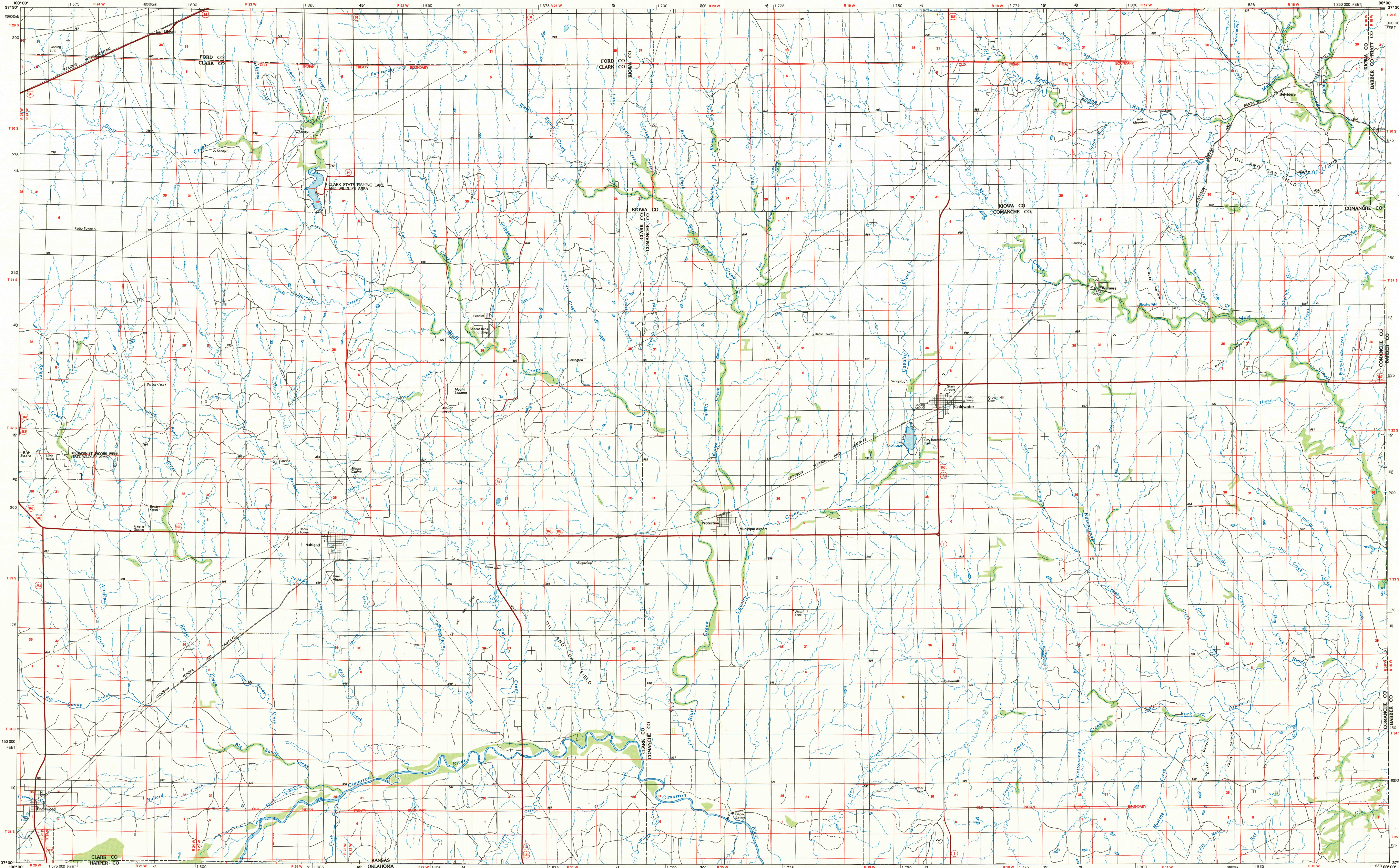
Topographic Map Symbols

Primary highway, hard surface	Secondary highway, hard surface	Light duty road, principal street, hard or improved surface	Other road or street; trail	Road marker; interstate, U.S., State	Railroad; standard gage; narrow gage	Bridge; overpass; underpass	Tunnel; road; railroad	Built up area; locality; elevation	Airport; landing field; landing strip	National boundary	State boundary	County boundary	National or State reservation boundary	Land grant boundary	U.S. public lands survey; range; township; section	Range; township; section line; projected	Power transmission line; pipeline	Dam; dam with lock	Cemetery; building	Windmill; water well; spring	Mine shaft; adit or cave; mine, quarry; gravel pit	Campground; picnic area; U.S. location monument	Ruins; cliff dwelling	Distorted surface; strip mine, lava; sand	Contours; index; intermediate; supplementary	Hydrographic contours; index; intermediate	Stream, lake; perennial; intermittent	Rapids, large and small; falls, large and small	Area to be submerged; marsh, swamp	Land subject to controlled inundation; woodland	Scrub; mangrove	Orchard; vineyard
-------------------------------	---------------------------------	---	-----------------------------	--------------------------------------	--------------------------------------	-----------------------------	------------------------	------------------------------------	---------------------------------------	-------------------	----------------	-----------------	--	---------------------	--	--	-----------------------------------	--------------------	--------------------	------------------------------	--	---	-----------------------	---	--	--	---------------------------------------	---	------------------------------------	---	-----------------	-------------------

A pamphlet describing topographic maps is available on request

PROTECTION, KANSAS-OKLAHOMA

30 X 60 MINUTE SERIES (PLANIMETRIC)



PROTECTION, KANSAS-OKLAHOMA
37099-A1-PL-100

1985