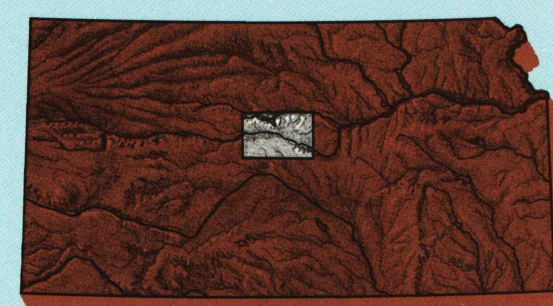


RUSSELL, KANSAS

30 X 60 MINUTE SERIES (PLANIMETRIC)

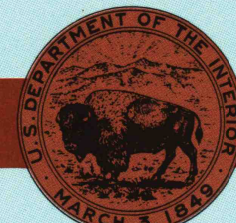
Russell
KANSAS

1:100 000-scale
planimetric map



30 X 60 MINUTE QUADRANGLE
SHOWING

- Elevations in meters
- Highways, roads and other manmade structures
- Water features
- Woodland areas
- Geographic names



GEOLOGICAL SURVEY

1985

Produced by the United States Geological Survey
Compiled from USGS 1:24 000-scale topographic maps dated 1956-1979. Planimetry revised from aerial photographs taken 1981 and other source data. Revised information not field checked. Map edited 1985.
Projection and 10 000-meter grid, zone 14, Universal Transverse Mercator
25 000-foot grid ticks based on Kansas coordinate system, north and south zones
1927 North American Datum
To place on the predicted North American Datum 1983, move the projection lines 2 meters north and 30 meters east
There may be private inholdings within the boundaries of the National or State reservations shown on this map

NATIONAL GEODETIC VERTICAL DATUM OF 1929
ELEVATIONS SHOWN TO THE NEAREST METER

THIS MAP COMPLIES WITH NATIONAL MAP ACCURACY STANDARDS

CONVERSION TABLE		DECLINATION DIAGRAM	ADJOINING MAPS			
Meters	Feet		1	2	3	
1	3.2808		1	2	3	
2	6.5617		4	5		
3	9.8425					
4	13.1234					
5	16.4042					
6	19.6850					
7	22.9659					
8	26.2467					
9	29.5276					
10	32.8084					
To convert meters to feet multiply by 3.2808		UTM grid convergence (GN) and 1985 magnetic declination (MN) at center of map Diagram is approximate	1	2	3	
To convert feet to meters multiply by 0.3048			4	5	6	
			7	8		

FOR SALE BY U.S. GEOLOGICAL SURVEY
DENVER, COLORADO 80225, OR RESTON, VIRGINIA 22092

USGS NMD HISTORICAL MAP

JAN 24 1986

REC'D FILE COPY
Topographic Map Symbols

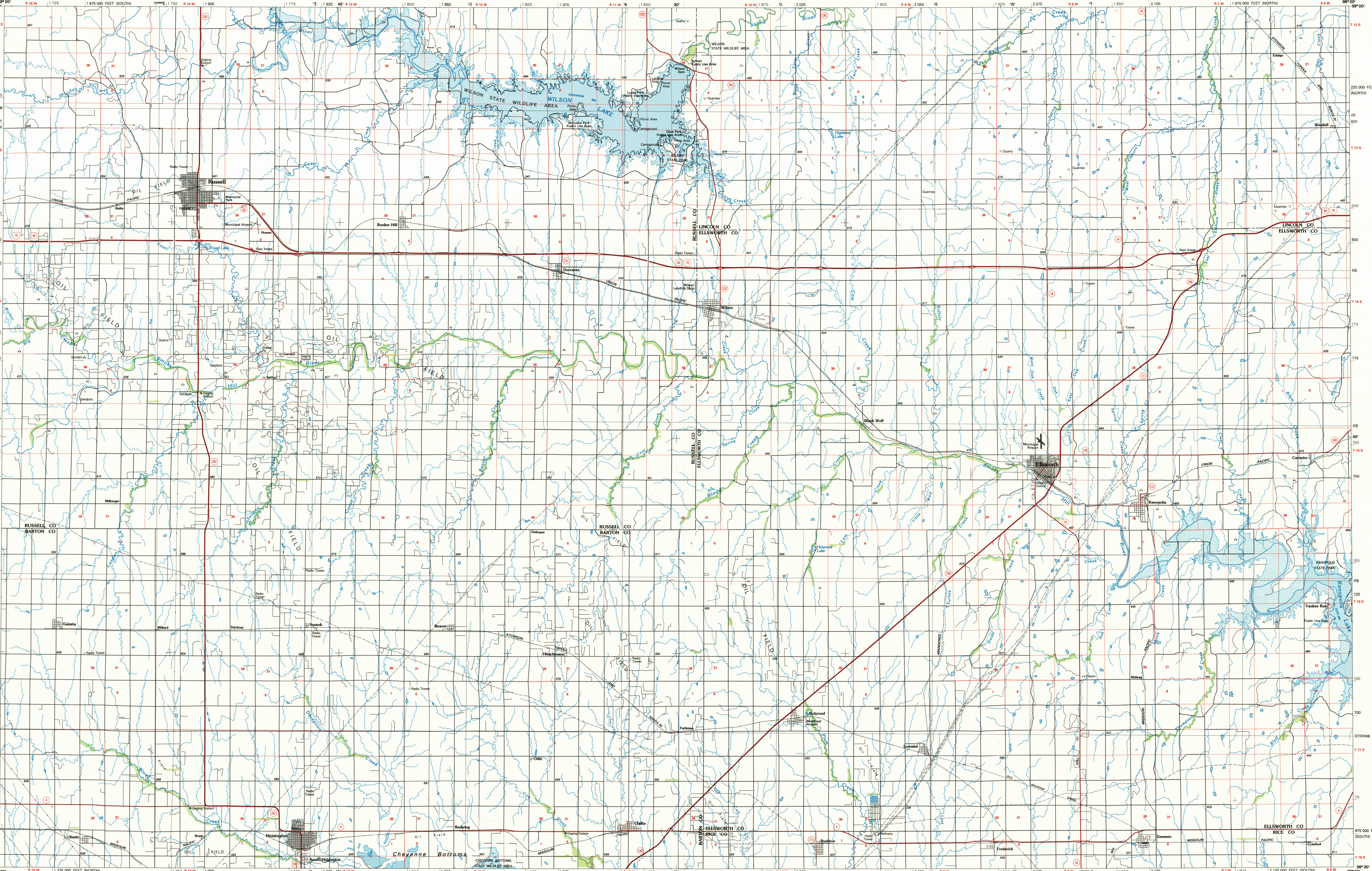
- Primary highway, hard surface.....
- Secondary highway, hard surface.....
- Light duty road, principal street, hard or improved surface.....
- Other road or street, trail.....
- Route marker: Interstate, U.S., State.....
- Railroad: standard gage, narrow gage.....
- Bridge: overpass, underpass.....
- Tunnel: road, railroad.....
- Built up area, locality, elevation.....
- Airport: landing field, landing strip.....
- National boundary.....
- State boundary.....
- County boundary.....
- National or State reservation boundary.....
- Land grant boundary.....
- U.S. public lands survey: range, township, section.....
- Range, township, section line: protracted.....
- Power transmission line: pipeline.....
- Dam: dam with lock.....
- Cemetery: building.....
- Windmill; water well; spring.....
- Mine shaft; adit or cave; mine, quarry; gravel pit.....
- Campground; picnic area; U.S. location monument.....
- Rail; cliff dwelling.....
- Distorted surface: strip mine, lava, sand.....
- Contours: index, intermediate, supplementary.....
- Bathymetric contours: index, intermediate.....
- Stream, lake, perennial, intermittent.....
- Rapids, large and small; falls, large and small.....
- Area to be submerged; marsh, swamp.....
- Land subject to controlled inundation; woodland.....
- Scrub; mangrove.....
- Orchard; vineyard.....

A pamphlet describing topographic maps is available on request

RUSSELL, KANSAS

38098-E1-PL-100

1985



SCALE 1:100 000
1 CENTIMETER ON THE MAP REPRESENTS 1 KILOMETER ON THE GROUND