

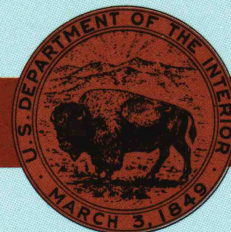
Scott City KANSAS

1:100 000-scale
planimetric map



30 X 60 MINUTE QUADRANGLE
SHOWING

- Elevations in meters
- Highways, roads and other manmade structures
- Water features
- Woodland areas
- Geographic names



GEOLOGICAL SURVEY

1985

Produced by the United States Geological Survey

Compiled from USGS 1:24 000-scale topographic maps dated 1965-1978. Planimetry revised from aerial photographs taken 1981 and other source data. Revised information not field checked. Map edited 1985.

Projection and 10 000-meter grid, zone 14.

Universal Transverse Mercator

25 000-foot grid ticks based on Kansas coordinate system, south zone

1927 North American Datum

To place on the predicted North American Datum 1983, move the projection lines 2 meters north and 36 meters east

There may be private inholdings within the boundaries of the National or State reservations shown on this map

NATIONAL GEODETIC VERTICAL DATUM OF 1929

ELEVATIONS SHOWN TO THE NEAREST METER

THIS MAP COMPLIES WITH NATIONAL MAP ACCURACY STANDARDS

CONVERSION TABLE

Meters	Feet
1	3.2808
2	6.5617
3	9.8425
4	13.1234
5	16.4042
6	19.6850
7	22.9658
8	26.2467
9	29.5275
10	32.8084

To convert meters to feet multiply by 3.2808

To convert feet to meters multiply by 0.3048

DECLINATION DIAGRAM

The diagram illustrates the relationship between three types of north: True North (T), Magnetic North (M), and Grid North (G). True North is represented by a vertical line. Magnetic North is shown as a line deviating from True North by an angle of 9°56' (labeled as 9°56' 17' MILES). Grid North is shown as a line deviating from True North by an angle of 9°14' (labeled as 9°14' 169 MILES). The diagram also includes a scale bar for 1 mile and a note that the diagram is approximate.

UTM grid convergence (GM) and 1985 magnetic declination (MD) at center of map. Diagram is approximate.

ADJOINING MAPS

1	2	3
4	5	6
7	8	9

1 Sharon Springs

2 Healy

3 Hays

4 Leoti

5 Larned

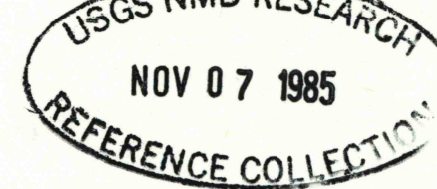
6 Ulysses

7 Dodge City

8 Kinsley

FOR SALE BY U.S. GEOLOGICAL SURVEY

DENVER, COLORADO 80225, OR RESTON, VIRGINIA 22092

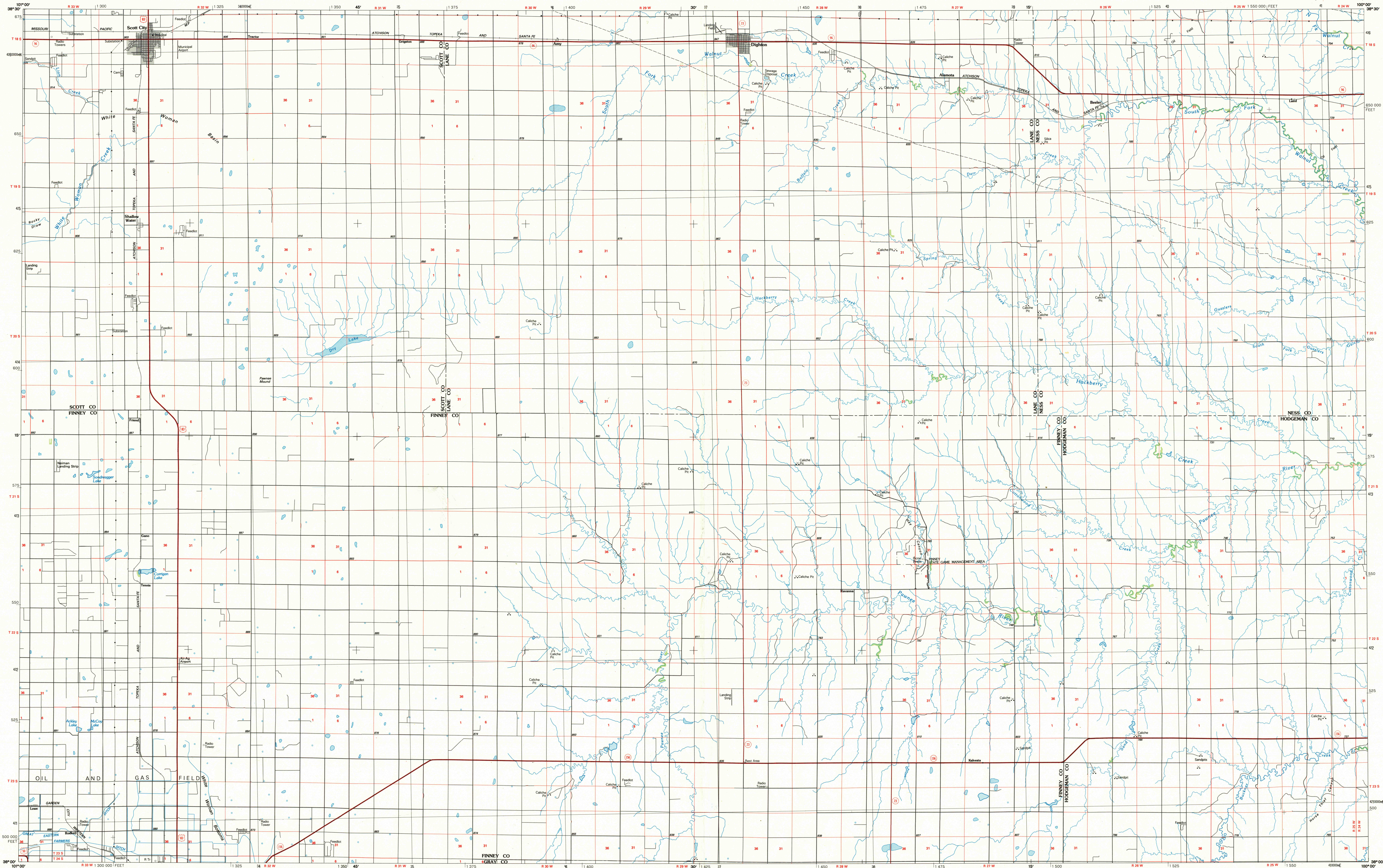


Topographic Map Symbols

Primary highway, hard surface	
Secondary highway, hard surface	
Light duty road, principal street, hard or improved surface	
Other road or street; trail	
Route marker: Interstate, U.S., State	
Railroad: standard gage; narrow gage	
Bridge: overpass; underpass	
Tunnel: road; railroad	
Built up area; locality; elevation	
Airport; landing field; landing strip	
National boundary	
State boundary	
County boundary	
National or State reservation boundary	
Land grant boundary	
U.S. public lands survey: range, township, section	
Range, township, section line: projected	
Power transmission line; pipeline	
Dam; dam with lock	
Cemetery; building	
Wellhead; water well; spring	
Mine shaft; adit or cave; mine, quarry, gravel pit	
Campground; picnic area; U.S. location monument	
Ruins; cliff dwelling	
Distorted surface: strip mine, lava, sand	
Contours: index; intermediate; supplementary	
Bathymetric contours: index; intermediate	
Stream, lake: perennial; intermittent	
Rapids, large and small; falls, large and small	
Area to be submerged; marsh, swamp	
Land subject to controlled inundation; woodland	
Scrub; meadow	
Orchard; vineyard	

A pamphlet describing topographic maps is available on request

SCOTT CITY, KANSAS



SCALE 1:100 000
1 CENTIMETER ON THE MAP REPRESENTS 1 KILOMETER ON THE GROUND

SCOTT CITY, KANSAS
38100-A1-PL-100

1985