

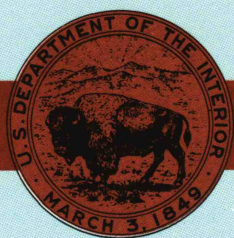
Sedan
KANSAS

1:100 000-scale
planimetric map



30 X 60 MINUTE QUADRANGLE
SHOWING

- Elevations in meters
- Highways, roads and other manmade structures
- Water features
- Woodland areas
- Geographic names



GEOLOGICAL SURVEY

1985

Produced by the United States Geological Survey

Compiled from USGS 1:24 000-scale topographic maps dated 1962-1979. Planimetry revised from aerial photographs taken 1981 and other source data. Revised information not field checked. Map edited 1985.
Projection and 10 000-meter grid, zone 14, Universal Transverse Mercator
25 000-foot grid ticks based on Kansas coordinate system, south zone
1927 North American Datum
To place on the predicted North American Datum 1983, move the projection lines 1 meter south and 25 meters east
There may be private inholdings within the boundaries of the National or State reservations shown on this map

NATIONAL GEODETIC VERTICAL DATUM OF 1929
ELEVATIONS SHOWN TO THE NEAREST METER

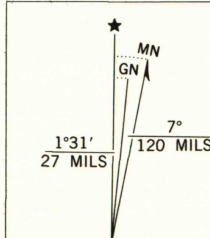
THIS MAP COMPLIES WITH NATIONAL MAP ACCURACY STANDARDS

CONVERSION TABLE

Meters	Feet
1	3.281
2	6.562
3	9.843
4	13.124
5	16.405
6	19.686
7	22.967
8	26.248
9	29.529
10	32.810

To convert meters to feet multiply by 3.281
To convert feet to meters multiply by 0.3048

DECLINATION DIAGRAM



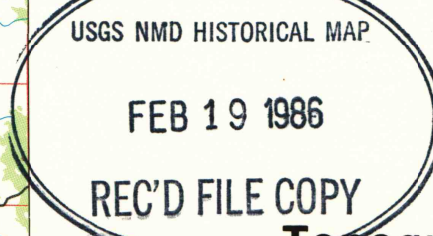
UTM grid convergence (GM) and magnetic declination (MD) at center of map
Diagram is approximate

ADJOINING MAPS

1	2	3
4	5	6
7	8	

- 1 Wichita
- 2 El Dorado
- 3 Chanute
- 4 Wellington
- 5 Colleyville
- 6 Ponca City
- 7 Pawhuska
- 8 Bartlesville

FOR SALE BY U.S. GEOLOGICAL SURVEY
DENVER, COLORADO 80225, OR RESTON, VIRGINIA 22092



Topographic Map Symbols

- Primary highway, hard surface
- Secondary highway, hard surface
- Light duty road, principal street, hard or improved surface
- Other road or street, wall
- Route marker: Interstate, U.S.; State
- Railroad: standard gage; narrow gage
- Bridge: overpass; underpass
- Tunnel: road; railroad
- Bath up area; locality; elevation
- Airport, landing field; landing strip
- National boundary
- State boundary
- County boundary
- National or State reservation boundary
- Land grant boundary
- U.S. public lands survey: range, township; section
- Range, township; section line: protracted
- Power transmission line; pipeline
- Dam; dam with lock
- Cemetery; building
- Woods; water well; spring
- Mine shaft; adit or cave; mine, quarry; gravel pit
- Campground; picnic area; U.S. location monument
- Ruins; cliff dwelling
- Disturbed surface: strip mine; lava; sand
- Contours: index; intermediate; supplementary
- Bathymetric contours: index; intermediate
- Stream, lake: perennial; intermittent
- Rapids, large and small; falls, large and small
- Area to be submerged; marsh; swamp
- Land subject to controlled inundation; woodland
- Scrub; mangrove
- Orchard; vineyard

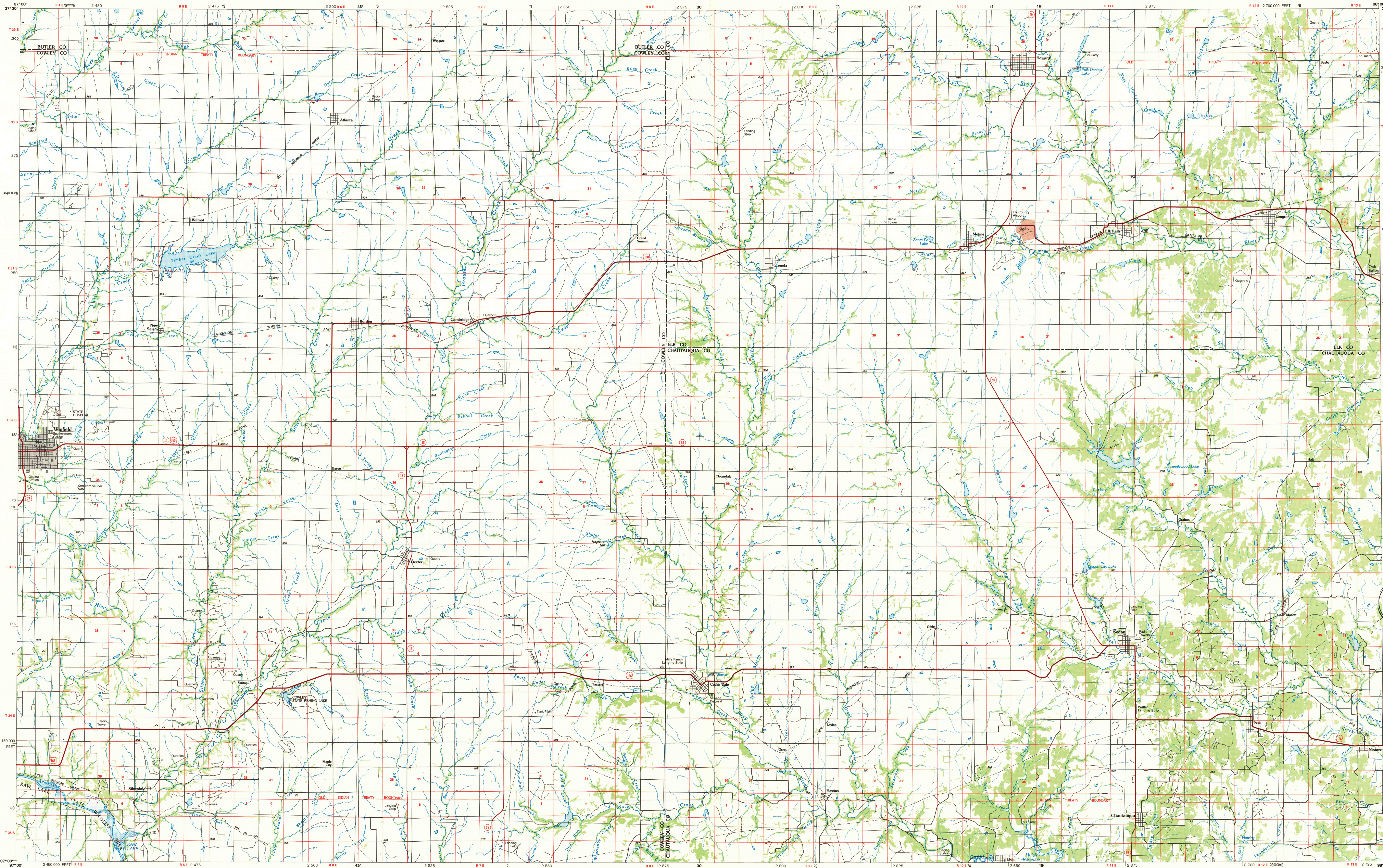
A pamphlet describing topographic maps is available on request

SEDAN, KANSAS
37096-A1-PL-100

1985

SEDAN, KANSAS

30 X 60 MINUTE SERIES (PLANIMETRIC)



SEDAN, KANSAS
37096-A1-PL-100

1985