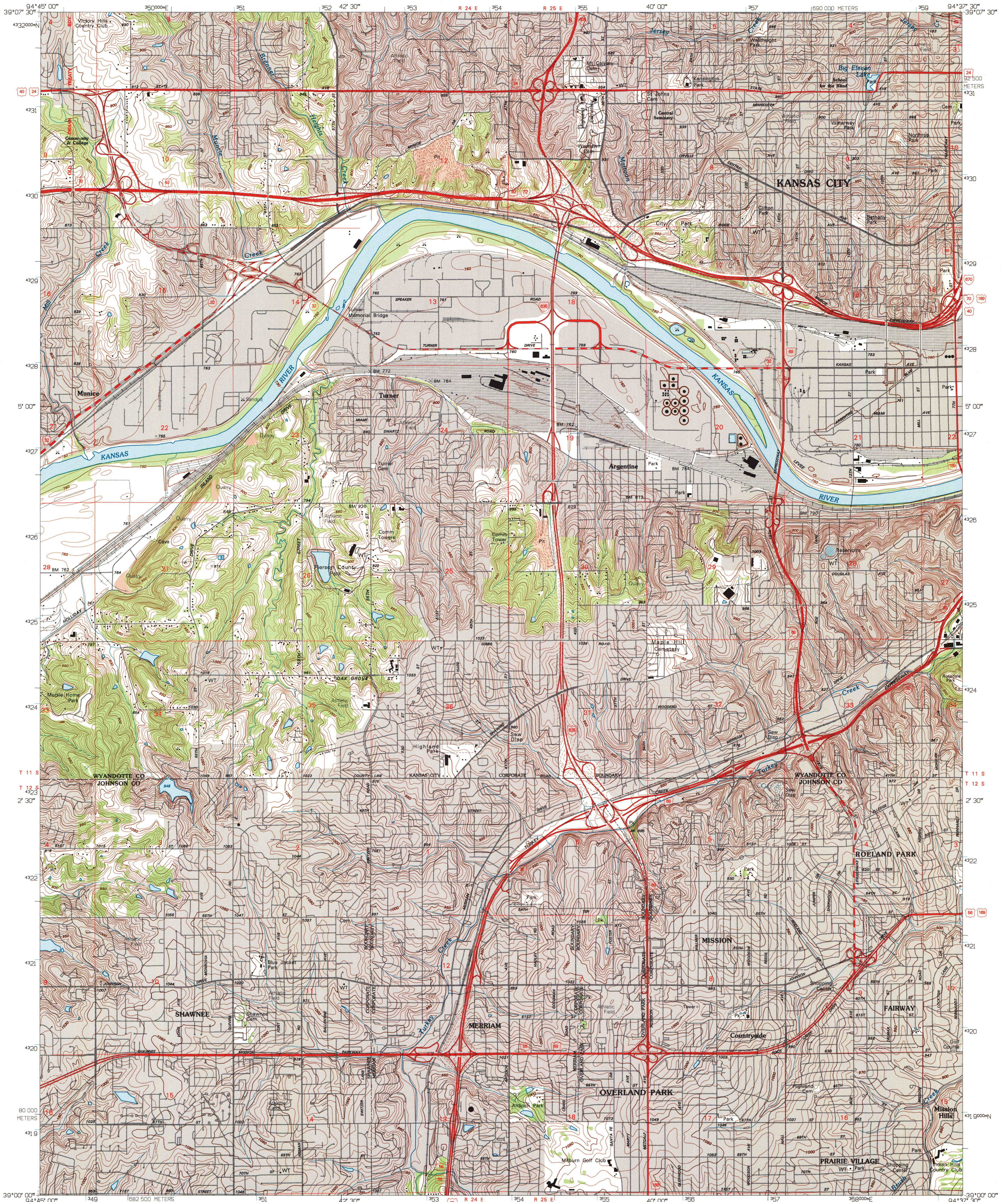
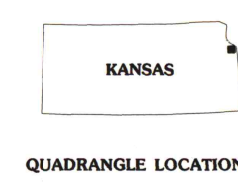
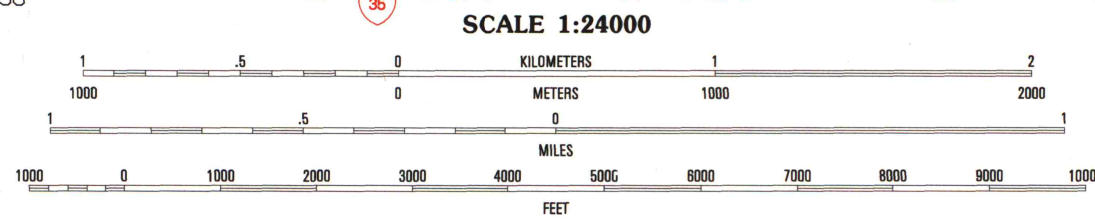
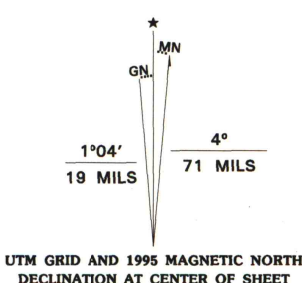


UNITED STATES
DEPARTMENT OF THE INTERIOR
GEOLOGICAL SURVEY

SHAWNEE QUADRANGLE
KANSAS
7.5 MINUTE SERIES (TOPOGRAPHIC)



Produced by the United States Geological Survey
Planimetry by photogrammetric methods from imagery dated 1955
Topography by plane-table surveys 1933-34. Revised 1964
Revised from imagery dated 1991. PLSS and survey control
current as of 1933-34. Map edited 1995. Contours not revised
Contours that conflict with revised planimetry are dashed
North American Datum of 1983 (NAD 83). Projection and
blue 1000-meter ticks: Universal Transverse Mercator, zone 15
2 500-meter ticks: Kansas Coordinate System of 1983 (north zone)
North American Datum of 1927 (NAD 27) is shown by dashed
corner ticks. The values of the shift between NAD 83 and NAD 27
for 7.5-minute intersections are obtainable from National Geodetic
Survey NADCON software



QUADRANGLE LOCATION

1	2	3	1 Wolcott
4	5	6	2 Parkville
7	8	9	3 North Kansas City
			4 Edwardsville
			5 Kansas City
			6 Olathe
			7 Lenexa
			8 Grandview

ADJOINING 7.5' QUADRANGLE NAMES

Primary highway
hard surface
Secondary highway
hard surface
Unimproved road

Light-duty road, hard or
improved surface
Unimproved road

Interstate Route U.S. Route State Route

A.H. ROBINSON
MAP LIBRARY
APR 19 1996
University of Wisconsin
Madison

SHAWNEE, KS
39094-A6-TF-024
1991

DMA 7062 II SW-SERIES V878

THIS MAP COMPLIES WITH NATIONAL MAP ACCURACY STANDARDS
FOR SALE BY U.S. GEOLOGICAL SURVEY, DENVER, COLORADO 80225, OR RESTON, VIRGINIA 22092
AND KANSAS GEOLOGICAL SURVEY, LAWRENCE, KANSAS 66044
A FOLDER DESCRIBING TOPOGRAPHIC MAPS AND SYMBOLS IS AVAILABLE ON REQUEST

