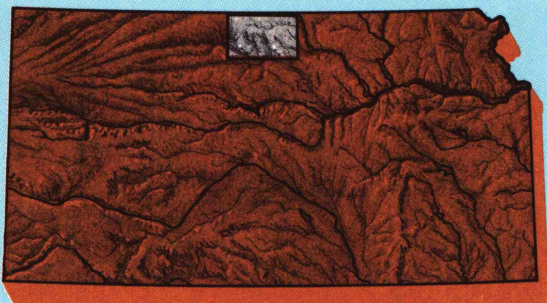


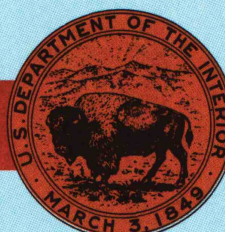
Smith Center KANSAS

1:100 000-scale metric
topographic map



30 X 60 MINUTE QUADRANGLE
SHOWING

- Contours and elevations in meters
- Highways, roads and other manmade structures
- Water features
- Woodland areas
- Geographic names



GEOLOGICAL SURVEY

1985
PHOTOINSPECTED 1985

Produced by the United States Geological Survey
Compiled from USGS 1:24 000-scale topographic maps dated 1960-1980. Planimetry revised from aerial photographs taken 1981 and other source data. Revised information not field checked. Map edited 1985
Projection and 10 000-meter grid, zone 14, Universal Transverse Mercator
25 000-foot grid ticks based on Kansas coordinate system, north zone
To place on the predicted North American Datum 1983, move the projection lines 3 meters north and 30 meters east
There may be private inholdings within the boundaries of the National or State reservations shown on this map
Map photoinspected using 1985 photographs
No major culture or drainage changes found
CONTOUR INTERVAL 10 METERS
NATIONAL GEODETIC VERTICAL DATUM OF 1929
ELEVATIONS SHOWN TO THE NEAREST METER

THIS MAP COMPLIES WITH NATIONAL MAP ACCURACY STANDARDS

CONVERSION TABLE		DECLINATION DIAGRAM	ADJOINING MAPS			
Meters	Feet		1	2	3	
1	3.2808		4	5		
2	6.5617					
3	9.8425					
4	13.1234					
5	16.4042					
6	19.6850					
7	22.9659					
8	26.2467					
9	29.5276					
10	32.8084					
To convert meters to feet multiply by 3.2808		UTM grid convergence (GN) and 1983 magnetic declination (MD) at center of map diagram is approximate	1	Holdrede		
To convert feet to meters multiply by 0.3048			2	Red Cloud		
			3	Fairbury		
			4	Norton		
			5	Concordia		
			6	Plainsville		
			7	Bellev		
			8	Clay Center		

FOR SALE BY U.S. GEOLOGICAL SURVEY
DENVER, COLORADO 80225, OR RESTON, VIRGINIA 22092

A.H. ROBINSON
MAP LIBRARY
JUL 19 1990
U.S. Regional
Depository Copy
DO NOT DISCARD
University of Wisconsin
Madison

Topographic Map Symbols

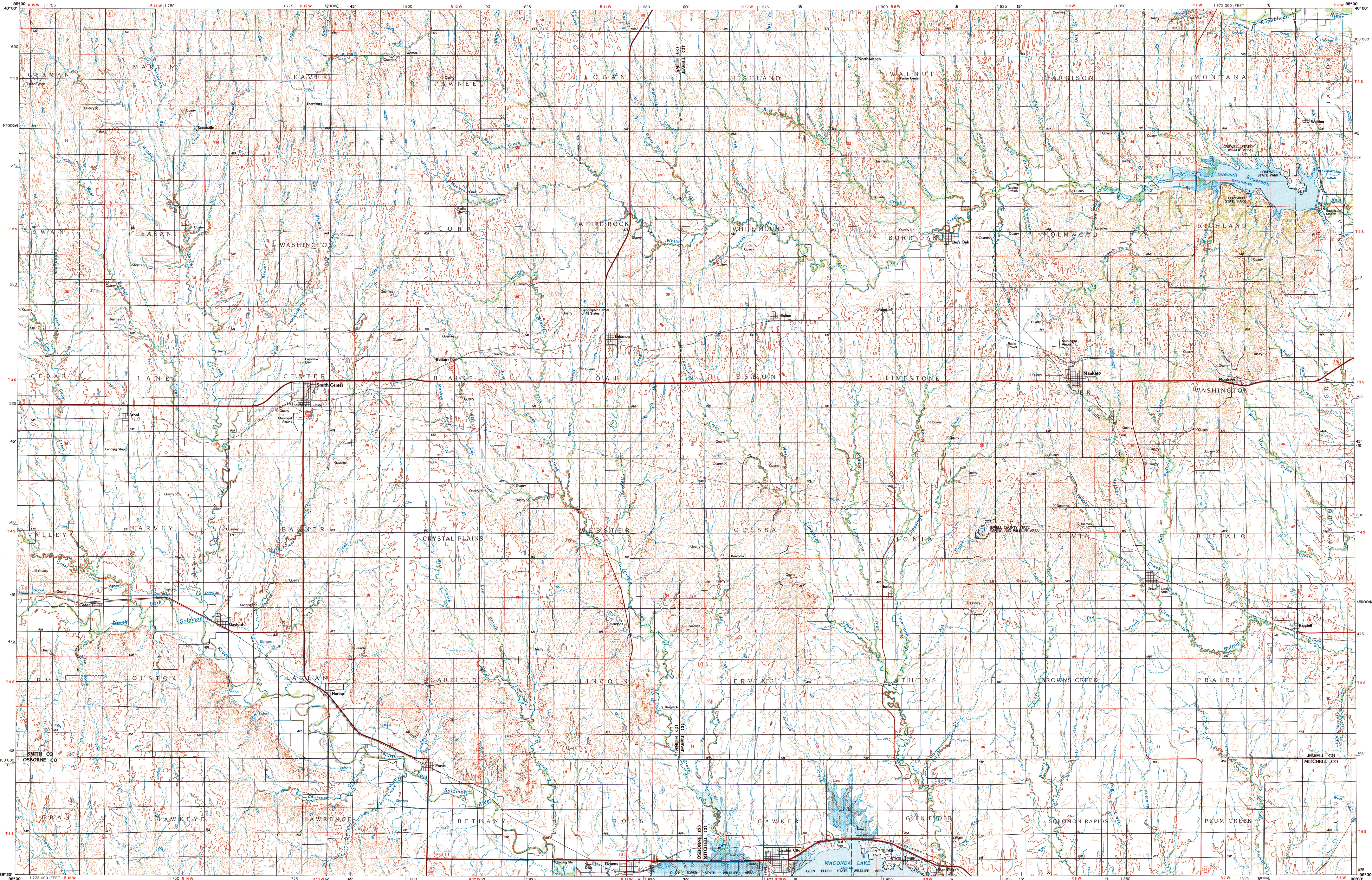
Primary highway, hard surface	
Secondary highway, hard surface	
Light duty road, principal street, hard or improved surface	
Other road or street, trail	
Railroad: standard gage; narrow gage	
Bridge: overpass; underpass	
Tunnel: road; railroad	
Built-up area, locality, elevation	
Airport: landing field; landing strip	
National boundary	
State boundary	
County boundary	
National or State reservation boundary	
Land grant boundary	
U.S. public lands survey: range, township, section	
Range, township, section line: protracted	
Power transmission line: pipeline	
Dam; dam with lock	
Cemetery; building	
Windmill; water well; spring	
Mine shaft; adit or cave; mine, quarry; gravel pit	
Campground; picnic area; U.S. location monument	
Ruin; cliff dwelling	
Distorted surface: strip mine, lava, sand	
Contours: index; intermediate; supplementary	
Bathymetric contours: index; intermediate	
Stream, lake: perennial; intermittent	
Rapids, large and small; falls, large and small	
Area to be submerged; marsh, swamp	
Land subject to controlled inundation; woodland	
Scrub; mangrove	
Orchard; vineyard	

A pamphlet describing topographic maps is available on request

B006-9/00
SET

SMITH CENTER, KANSAS

30 X 60 MINUTE SERIES (TOPOGRAPHIC)



• INTERIOR-GEOLOGICAL SURVEY, RESTON, VIRGINIA-1980

KILOMETERS 1 0 1 2 3 4 5 6 7 8 9 10 11 12 13 14 15 16 17 18 19 20
MILES 1 0 1 2 3 4 5 6 7 8 9 10 11 12 13

SCALE 1:100 000
1 CENTIMETER ON THE MAP REPRESENTS 1 KILOMETER ON THE GROUND
CONTOUR INTERVAL 10 METERS

1000 0 5000 10000 15000 20000 25000 30000 35000 40000 45000 50000 55000 60000 65000 70000 FEET

SMITH CENTER, KANSAS
39098-E1-TM-100
1985
PHOTOINSPECTED 1985