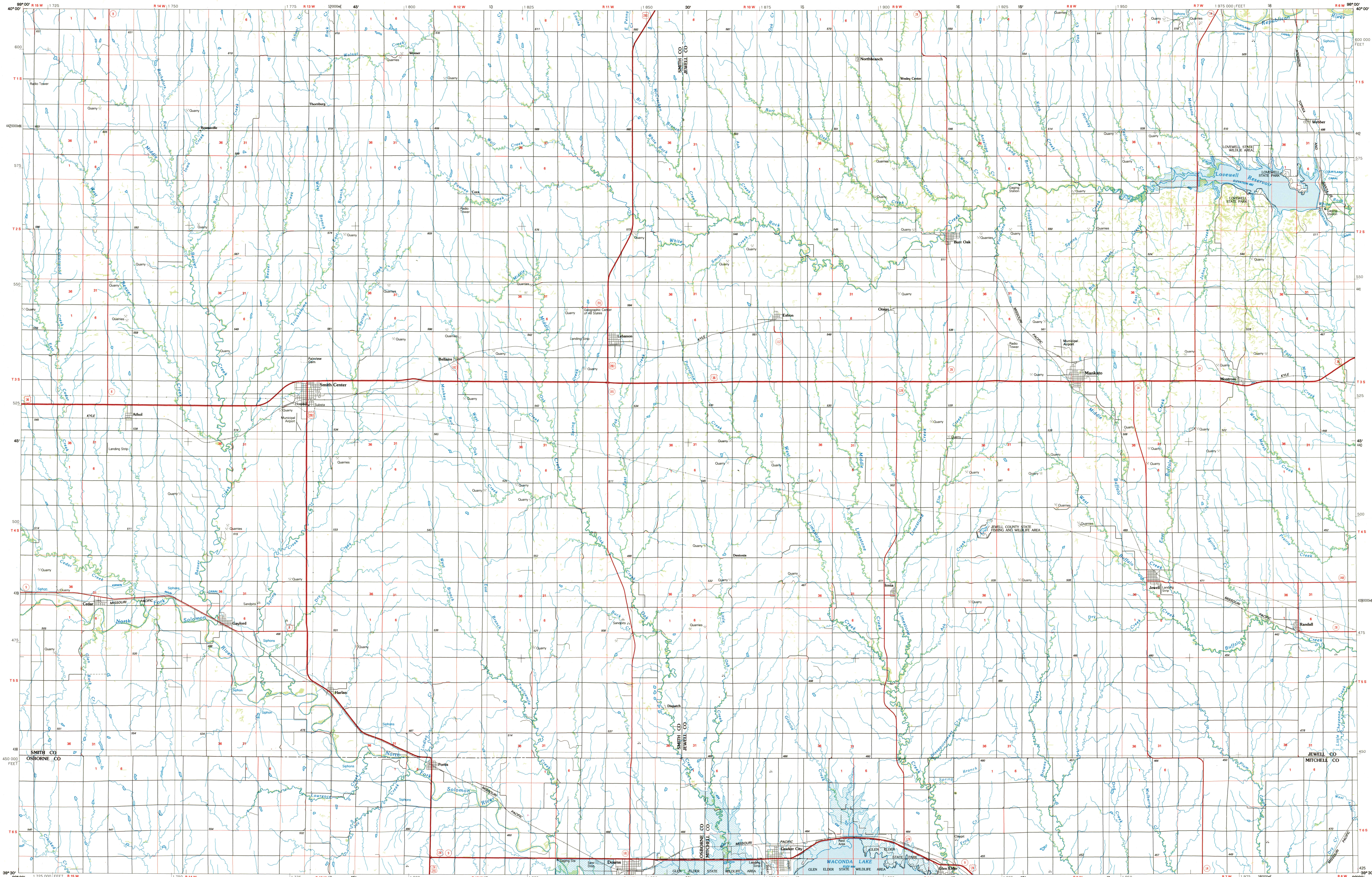


SMITH CENTER, KANSAS



39098-E1-PL-100

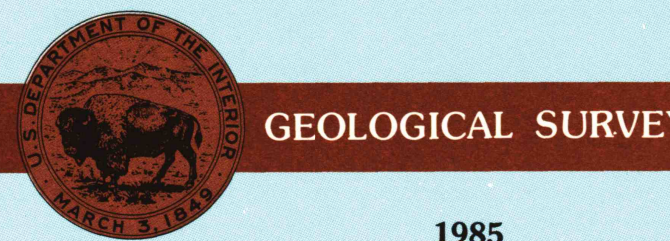
# Smith Center KANSAS

1:100 000-scale  
planimetric map



30 X 60 MINUTE QUADRANGLE  
SHOWING

- Elevations in meters
- Highways, roads and other manmade structures
- Water features
- Woodland areas
- Geographic names



Produced by the United States Geological Survey

Compiled from USGS 1:24 000-scale topographic maps dated 1960-1980. Planimetry revised from aerial photographs taken 1981 and other source data. Revised information not field checked. Map edited 1985

Projection and 10 000-meter grid, zone 14, Universal Transverse Mercator  
25 000-foot grid ticks based on Kansas coordinate system, north zone

1927 North American Datum  
To place on the predicted North American Datum 1983, move the projection lines 3 meters north and 30 meters east  
There may be private inholdings within the boundaries of the National or State reservations shown on this map

NATIONAL GEODETIC VERTICAL DATUM OF 1929  
ELEVATIONS SHOWN TO THE NEAREST METER

THIS MAP COMPLIES WITH NATIONAL MAP ACCURACY STANDARDS

CONVERSION TABLE		DECLINATION DIAGRAM	ADJOINING MAPS			
Meters	Feet		1	2	3	
1	3.2808		1	2	3	
2	6.5616		4	5	6	
3	9.8424		7	8	9	
4	13.1232		10	11	12	
5	16.4040		13	14	15	
6	19.6848		16	17	18	
7	22.9656		19	20	21	
8	26.2464		22	23	24	
9	29.5272		25	26	27	
10	32.8080		28	29	30	
To convert meters to feet multiply by 3.2808		UTM grid convergence (0N) and 1983 magnetic declination (M) at center of map. Diagram is approximate.				
To convert feet to meters multiply by 0.3048						

FOR SALE BY U.S. GEOLOGICAL SURVEY  
DENVER, COLORADO 80225, OR RESTON, VIRGINIA 22092

## Topographic Map Symbols

Primary highway, hard surface	
Secondary highway, hard surface	
Light duty road, principal street, hard or improved surface	
Other road or street; trail	
Route marker: Interstate, U.S., State	
Railroad: standard gage; narrow gage	
Bridge: overpass; underpass	
Tunnel: road; railroad	
Built up area; locality; elevation	
Airport: landing field; landing strip	
National boundary	
State boundary	
County boundary	
National or State reservation boundary	
Land grant boundary	
U.S. public lands survey: range, township, section	
Range, township, section line: protracted	
Power transmission line; pipeline	
Dam; dam with lock	
Cemetery; building	
Windmill; water well; spring	
Mine shaft; adit or cave; mine, quarry; gravel pit	
Cemetary; pylon area; U.S. location monument	
Railroad; adit; dwelling	
Distorted surface: strip mine, lava, sand	
Contours: index; intermediate; supplementary	
Bathymetric contours: strip mine, lava, sand	
Stream, lake; perennial; intermittent	
Rapids; large and small; falls; large and small	
Area to be submerged; marsh, swamp	
Land subject to controlled inundation; woodland	
Scrub; mangrove	
Orchard; vineyard	

A pamphlet describing topographic maps is available on request

SMITH CENTER, KANSAS  
39098-E1-PL-100

1985