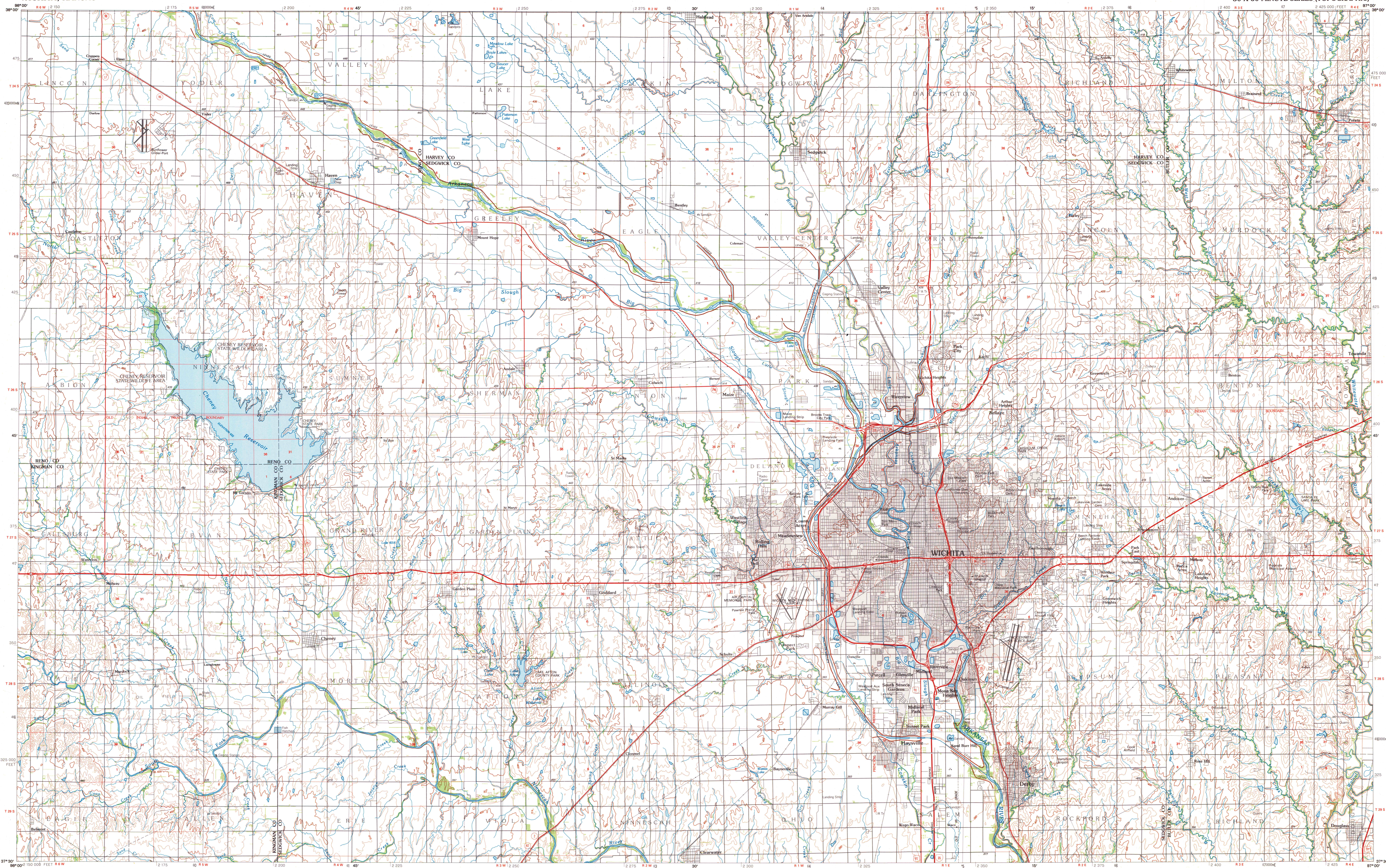
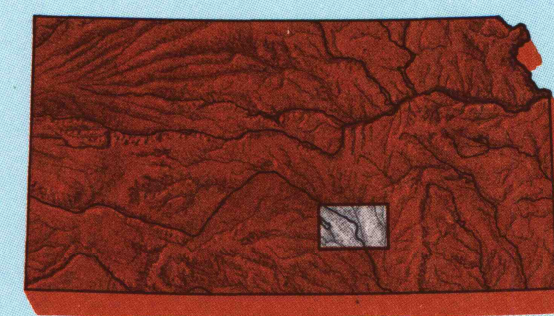
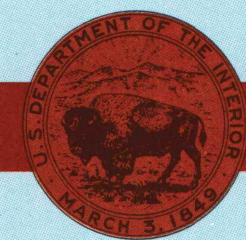


WICHITA, KANSAS

30 X 60 MINUTE SERIES (TOPOGRAPHIC)

Wichita
KANSAS1:100 000-scale metric
topographic map30 X 60 MINUTE QUADRANGLE
SHOWING

- Contours and elevations in meters
- Highways, roads and other manmade structures
- Water features
- Woodland areas
- Geographic names



GEOLOGICAL SURVEY

1990

Produced by the United States Geological Survey

Compiled from USGS 1:24 000-scale topographic maps dated 1955-1982. Planimetry revised from aerial photographs taken 1985 and other source data. Revised information not field checked. Map edited 1990.

Projection and 10 000-meter grid, zone 14,

Universal Transverse Mercator

25 000-foot grid ticks based on Kansas coordinate

system, south zone

1927 North American Datum

To place on the predicted North American Datum 1983, move

the projection lines 28 meters east

There may be private inholdings within the boundaries of

the National or State reservations shown on this map

CONTOUR INTERVAL 5 METERS
NATIONAL GEODETIC VERTICAL DATUM OF 1929
ELEVATIONS SHOWN TO THE NEAREST METER

THIS MAP COMPLIES WITH NATIONAL MAP ACCURACY STANDARDS

CONVERSION TABLE

Meters	Feet
1	3.2808
2	6.5617
3	9.8425
4	13.1234
5	16.4042
6	19.6850
7	22.9659
8	26.2467
9	29.5275
10	32.8084

To convert meters to feet multiply by 3.2808

To convert feet to meters multiply by 0.3048

DECLINATION DIAGRAM

0° 55' 16"

16 MILS

61/16

UTM grid convergence (GN) and 1000-metric (M) at center of map (diagram is approximate)

ADJOINING MAPS

1	2	3
4	5	
6	7	8

1 Great Bend

2 Hutchinson

3 Emporia

4 Pratt

5 El Dorado

6 Medicine Lodge

7 Wellington

8 Sedan

FOR SALE BY U.S. GEOLOGICAL SURVEY
DENVER, COLORADO 80225, OR RESTON, VIRGINIA 22092

ARTHUR H. ROBINSON MAP LIBRARY
University of Wisconsin-Madison
R-4-4-91

U.S. Regional
Depository Copy
DO NOT DISCARD

Topographic Map Symbols

Primary highway, hard surface	
Secondary highway, hard surface	
Light duty road, principal street, hard or improved surface	
Other road or street, trail	
Route marker, interstate, U.S. State	
Railroad, standard gauge, narrow gauge	
Bridge, overpass, underpass	
Tunnel, road, railroad	
Built-up area, locality, elevation	
Airport, landing field, landing strip	
National boundary	
State boundary	
County boundary	
National or State reservation boundary	
Land grant boundary	
U.S. public lands survey: range, township, section	
Range, township, section line: protracted	
Power transmission line: pipeline	
Clear den with foot...	
Cemetery, building	
Windmill, water well, spring	
Mine shaft, adit or cave, mine, quarry, gravel pit	
Campground, picnic area, U.S. location monument	
Rain, cliff dwelling	
Disturbed surface: strip mine, lava, sand	
Contours: index, intermediate, supplementary	
Bathymetric contours: index, intermediate	
Stream, lake, perennial, intermittent	
Rapids, large and small; falls, large and small	
Area to be submerged: marsh, swamp	
Land subject to controlled inundation: woodland	
Scrub, mangrove	
Orchard, vineyard	

A pamphlet describing topographic maps is available on request

WICHITA, KANSAS

37097-E1-TM-100

1990

B006-98.02
SET