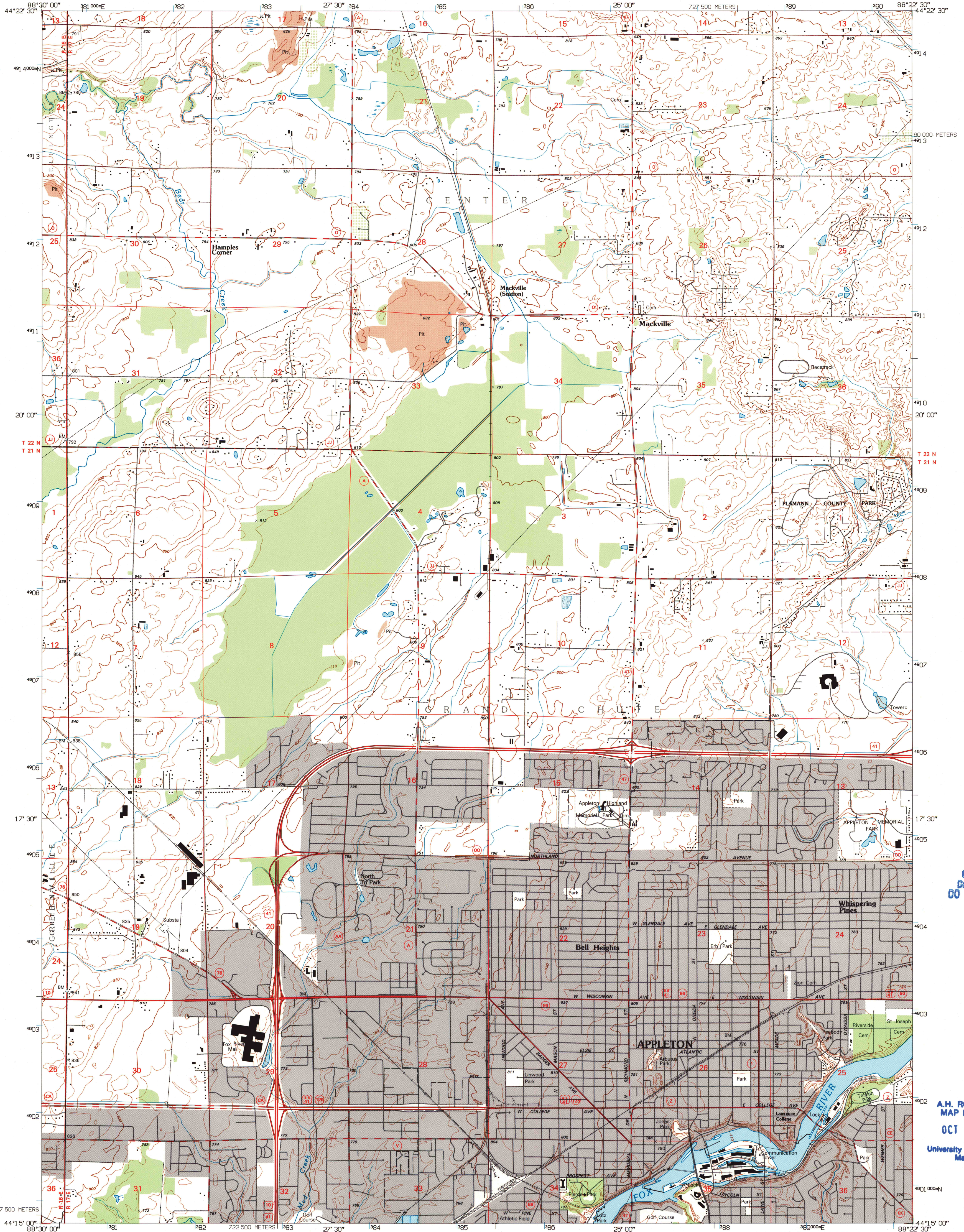


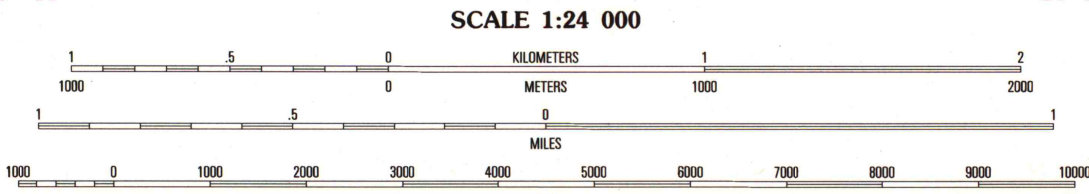
UNITED STATES  
DEPARTMENT OF THE INTERIOR  
GEOLOGICAL SURVEY

APPLETON QUADRANGLE  
WISCONSIN  
7.5-MINUTE SERIES (TOPOGRAPHIC)



Produced by the United States Geological Survey  
Compiled from imagery dated 1993. Revised from imagery dated 1992. PLSS and survey control current as of 1995. Contours and elevations current as of 1995. Map edited 1995.  
North American Datum of 1983 (NAD 83). Projection and blue 1000-meter ticks: Universal Transverse Mercator, zone 16. 2500-meter ticks: Wisconsin Coordinate System of 1983 (central zone).  
North American Datum of 1927 (NAD 27) is shown by dashed corner ticks. The values of the shift between NAD 83 and NAD 27 for 7.5-minute intersections are obtainable from National Geodetic Survey NADCON software.

UTM GRID AND 1995 MAGNETIC NORTH DECLINATION AT CENTER OF SHEET



CONTOUR INTERVAL 10 FEET  
NATIONAL GEODETIC VERTICAL DATUM OF 1929

THIS MAP COMPLIES WITH NATIONAL MAP ACCURACY STANDARDS  
FOR SALE BY U.S. GEOLOGICAL SURVEY  
DENVER, COLORADO 80225, OR RESTON, VIRGINIA 22092  
AND WISCONSIN GEOLOGICAL AND NATURAL HISTORY SURVEY, MADISON, WISCONSIN 53706  
A FOLDER DESCRIBING TOPOGRAPHIC MAPS AND SYMBOLS IS AVAILABLE ON REQUEST

ROAD CLASSIFICATION

Primary highway	Light-duty road, hard or hard surface
Secondary highway	Unimproved surface
hard surface	Unimproved road

Interstate Route U.S. Route State Route

QUADRANGLE LOCATION

1	2	3
4	5	6
7	8	

1 Shilston  
2 Black Creek  
3 Freedom  
4 Greenville  
5 Kaukauna  
6 Oshkosh NE  
7 Neshanic  
8 Sherwood

ADJOINING 7.5' QUADRANGLE NAMES

WISCONSIN

APPLETON, WI  
44088-C4-TP-024  
1992  
DMA 3372 IV SW-SERIES V861

U.S. Regional  
Repository Copy  
DO NOT DISCARD

A.H. ROBINSON  
MAP LIBRARY  
OCT 9 1996  
University of Wisconsin  
Madison

1995  
COPY  
1-1

