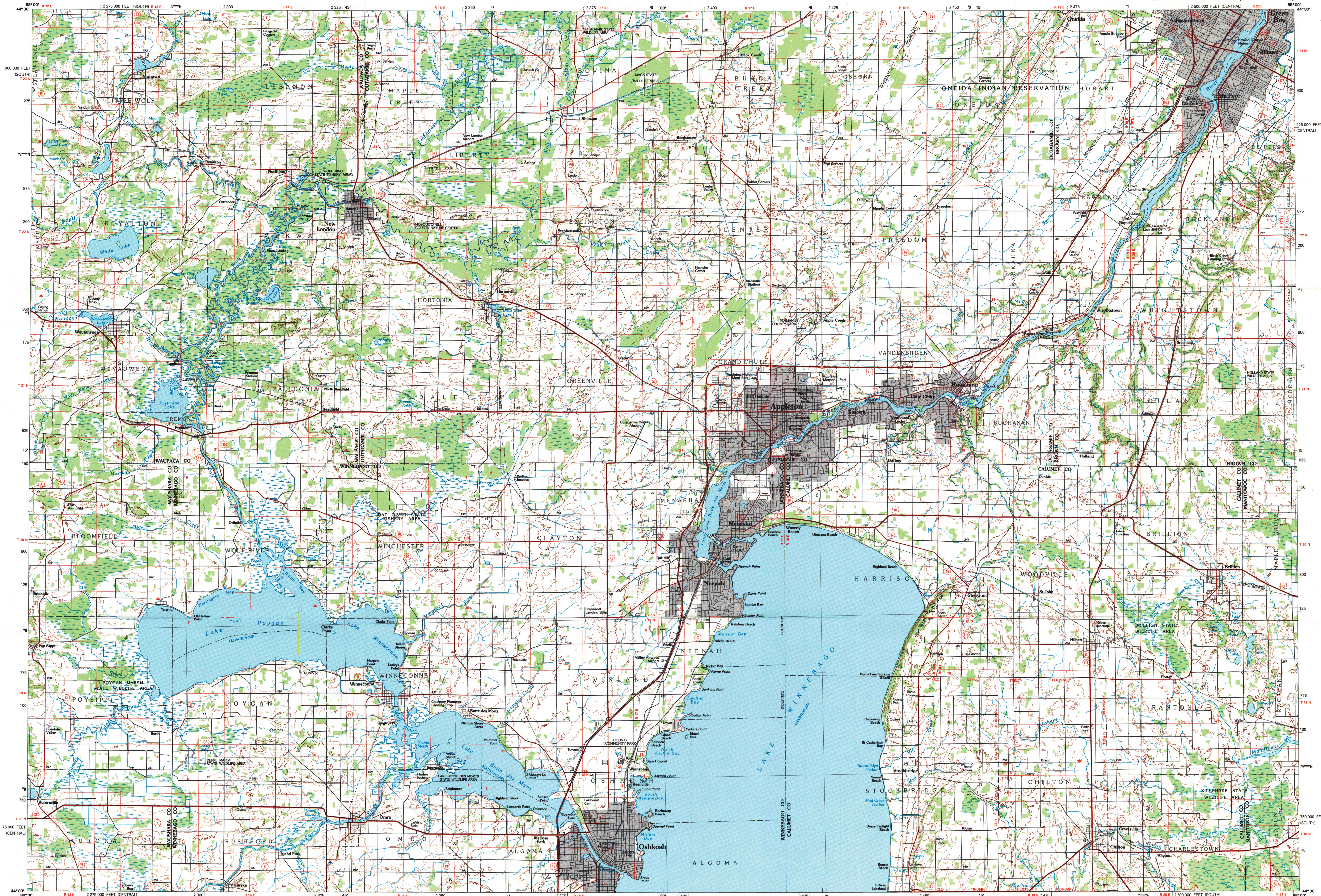
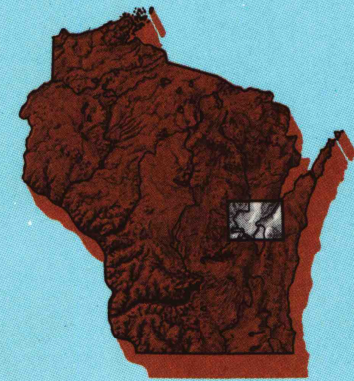
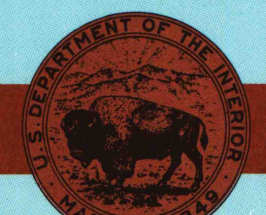


## APPLETON, WISCONSIN

30 X 60 MINUTE SERIES (TOPOGRAPHIC)

Appleton  
WISCONSIN1:100 000-scale metric  
topographic map30 X 60 MINUTE QUADRANGLE  
SHOWING

- Contours and elevations in meters
- Highways, roads and other manmade structures
- Water features
- Woodland areas
- Geographic names



GEOLOGICAL SURVEY

1984  
PHOTOINSPECTED 1986

Produced by the United States Geological Survey

Compiled from USGS 1:24 000-scale topographic maps dated 1955-1984. Planimetry revised from aerial photographs taken 1982 and other source data. Revised information not field checked. Map edited 1984.

Projection and 10 000-meter grid, zone 16, Universal Transverse Mercator  
25 000-foot grid ticks based on Wisconsin coordinate system, central and south zones  
1927 North American Datum  
To place on the predicted North American Datum 1983, move the projection lines 5 meters north and 8 meters east  
There may be private inholdings within the boundaries of the National or State reservations shown on this mapMap photoinspected using 1986 photographs  
No major culture or drainage changes found  
CONTOUR INTERVAL: 10 METERS  
SUPPLEMENTARY CONTOUR INTERVAL: 5 METERS  
NATIONAL GEODETIC VERTICAL DATUM OF 1929  
ELEVATIONS SHOWN TO THE NEAREST METER

THIS MAP COMPLIES WITH NATIONAL MAP ACCURACY STANDARDS

# CONVERSION TABLE

Meters	Feet
1	3.2808
2	6.5617
3	9.8425
4	13.1234
5	16.4042
6	19.6850
7	22.9659
8	26.2467
9	29.5276
10	32.8084

To convert meters to feet multiply by 3.2808

To convert feet to meters multiply by 0.3048

# DECLINATION DIAGRAM

The diagram shows two vertical lines representing north. The left line is labeled 'GN' (Geographic North) and the right line is labeled 'MN' (Magnetic North). The angle between them is labeled '1° 00'' and '19 MILS'. A scale bar below the lines indicates '1" = 1 MILE'.

UTM grid convergence (IGM) and 1984 magnetic declination (MD) at center of map Diagram is approximate

# ADJOINING MAPS

1	2
4	5
6	7

- 1 Waukau
- 2 Shawano
- 3 Sturgeon Bay
- 4 Wisconsin D
- 5 Manitowoc
- 6 Wisconsin D
- 7 Fond du Lac
- 8 Sheboygan

FOR SALE BY U.S. GEOLOGICAL SURVEY  
DENVER, COLORADO 80225, OR RESTON, VIRGINIA 22092

JUL 2 8 1993

ARTHUR H. ROBINSON MAP LIBRARY  
University of Wisconsin-Madison

## Topographic Map Symbols

Primary highway, hard surface	
Secondary highway, hard surface	
Light duty road, principal street, hard or improved surface	
Other road or street; trail	
Route marker: Interstate; U.S.; State	
Railroad: standard gage; narrow gage	
Bridge: overpass; underpass	
Tunnel: road; railroad	
Built up area; locality; elevation	
Airport; landing field; landing strip	
National boundary	
State boundary	
County boundary	
National or State reservation boundary	
Land grant boundary	
U.S. public lands survey: range, township; section	
Range, township; section line: protracted	
Power transmission line; pipeline	
Dam; dam with lock	
Cemetery; building	
Woodlot; water well; spring	
Mine shaft; adit or cave; mine, quarry; gravel pit	
Campground; picnic area; U.S. location monument	
Ruins; cliff dwelling	
Distorted surface: strip mine, lava, sand	
Contours: index; intermediate; supplementary	
Bathymetric contours: index; intermediate	
Stream, lake, perennial; intermittent	
Rapids, large and small; falls, large and small	
Area to be submerged; marsh; swamp	
Land subject to controlled inundation; woodland	
Scrub; mangrove	
Orchard; vineyard	

A pamphlet describing topographic maps is available on request

APPLETON, WISCONSIN  
44088-A1-TM-100  
1984  
PHOTOINSPECTED 1986Boog-9/7  
copy 5x

SET