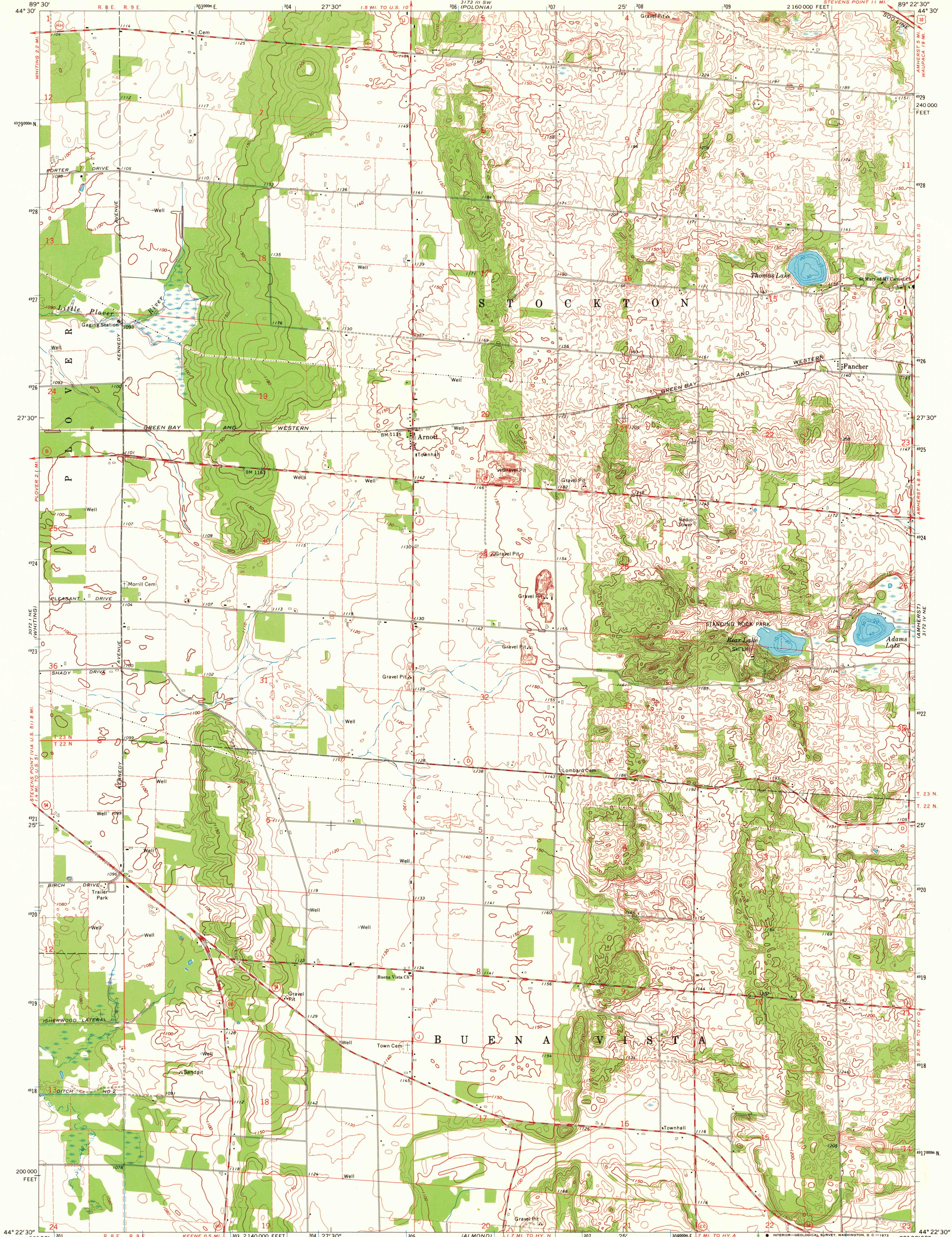


UNITED STATES  
DEPARTMENT OF THE INTERIOR  
GEOLOGICAL SURVEY

STATE OF WISCONSIN  
STATE HIGHWAY COMMISSION  
GEOLOGICAL AND NATURAL HISTORY SURVEY

ARNOTT QUADRANGLE  
WISCONSIN-PORTAGE CO.  
7.5 MINUTE SERIES (TOPOGRAPHIC)

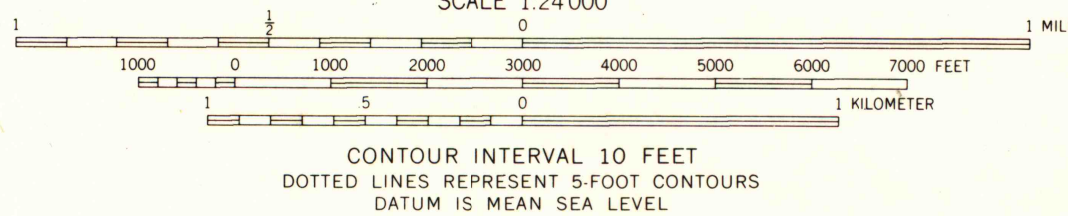


Mapped, edited, and published by the Geological Survey in cooperation with the Wisconsin Highway Commission and Wisconsin Geological and Natural History Survey. Control by USGS and USC&GS.

Topography by photogrammetric methods from aerial photographs taken 1969. Field checked 1969. Depth curves compiled from charts furnished by Wisconsin Department of Natural Resources.

Polyconic projection, 1927 North American datum. 10,000-foot grid based on Wisconsin coordinate system, central zone. DECLINATION AT CENTER OF SHEET 1000-meter Universal Transverse Mercator grid ticks, zone 16, shown in blue.

Fine red dashed lines indicate selected fence and field lines where generally visible on aerial photographs. This information is unchecked.



THIS MAP COMPLIES WITH NATIONAL MAP ACCURACY STANDARDS FOR SALE BY U.S. GEOLOGICAL SURVEY, WASHINGTON, D.C. 20242 AND BY THE WISCONSIN GEOLOGICAL AND NATURAL HISTORY SURVEY, MADISON, WISCONSIN 53706. A FOLDER DESCRIBING TOPOGRAPHIC MAPS AND SYMBOLS IS AVAILABLE ON REQUEST.

ROAD CLASSIFICATION  
Primary highway, all weather, hard surface  
Secondary highway, all weather, hard surface  
Light-duty road, all weather, improved surface  
Unimproved road, fair or dry weather  
U.S. Route  
State Route



ARNOTT, WIS.  
NW 1/4 AMHERST 15' QUADRANGLE  
N4422.5-W8922.5/7.5

1969

AMS 3172 IV NW-SERIES V861

MAP AND AIR PHOTO  
LIBRARY

AUG 17 1972

University of Wisconsin

1969  
copy  
1-1