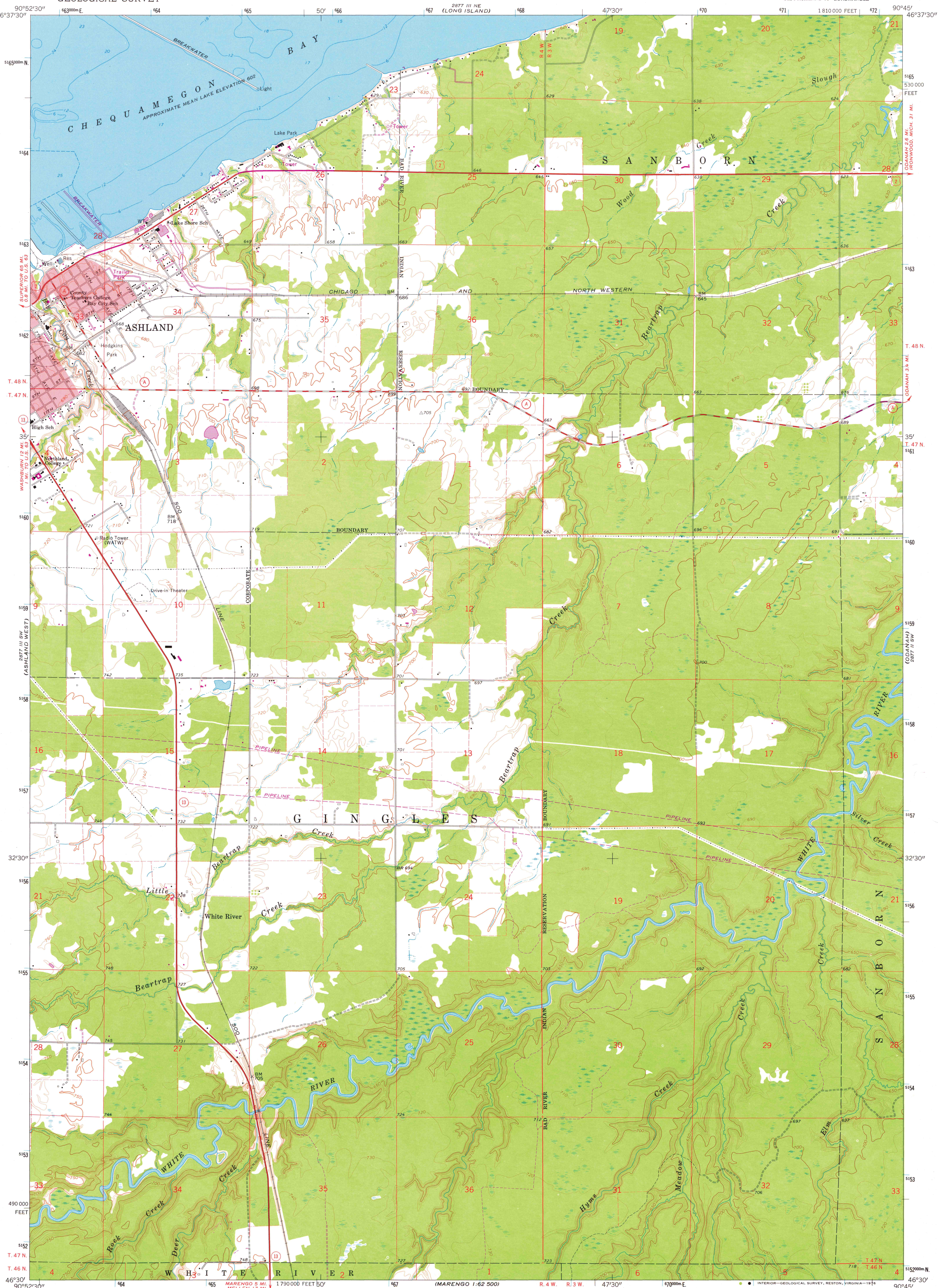


2877 III NW
(WASHBURN)

UNITED STATES
DEPARTMENT OF THE INTERIOR
GEOLOGICAL SURVEY

ASHLAND EAST QUADRANGLE
WISCONSIN-ASHLAND CO.
7.5 MINUTE SERIES (TOPOGRAPHIC)
SE/4 ASHLAND 15' QUADRANGLE

2877 III NW
(CHEQUAMEGON POINT)



MAP AND AIR PHOTO
LIBRARY
APR 11 1977
University of Wisconsin
Madison

Maped, edited, and published by the Geological Survey
in cooperation with State of Wisconsin agencies
Control by USGS and USC&GS
Topography by photogrammetric methods from aerial
photographs taken 1963. Field checked 1964
Selected hydrographic data compiled from U.S. Lake Survey
Charts 961 (1961) and 964 (1962)
This information is not intended for navigational purposes
Polyconic projection. 1927 North American datum
10,000-foot grid based on Wisconsin coordinate system,
north zone. 1000-metre Universal Transverse Mercator grid ticks,
zone 15, shown in blue
Red tint indicates areas in which only landmark buildings are shown
Fine red dashed lines indicate selected fence and field lines where
generally visible on aerial photographs. This information is unchecked

SCALE 1:24,000
CONTOUR INTERVAL 10 FEET
DOTTED LINES REPRESENT 5-FOOT CONTOURS
NATIONAL GEODETIC VERTICAL DATUM OF 1929
DEPTH CURVES AND SOUNDINGS IN FEET-DATUM IS LOW WATER 601.6 FEET

ROAD CLASSIFICATION
Heavy-duty ——— Light-duty ———
Medium-duty ——— Unimproved dirt ———
U.S. Route ——— State Route ———

ASHLAND EAST, WIS.
SE/4 ASHLAND 15' QUADRANGLE
N4630-W9045/7.5
1964
PHOTOREVISED 1975
AMS 2877 III SE-SERIES V861

1975
copy
1-1