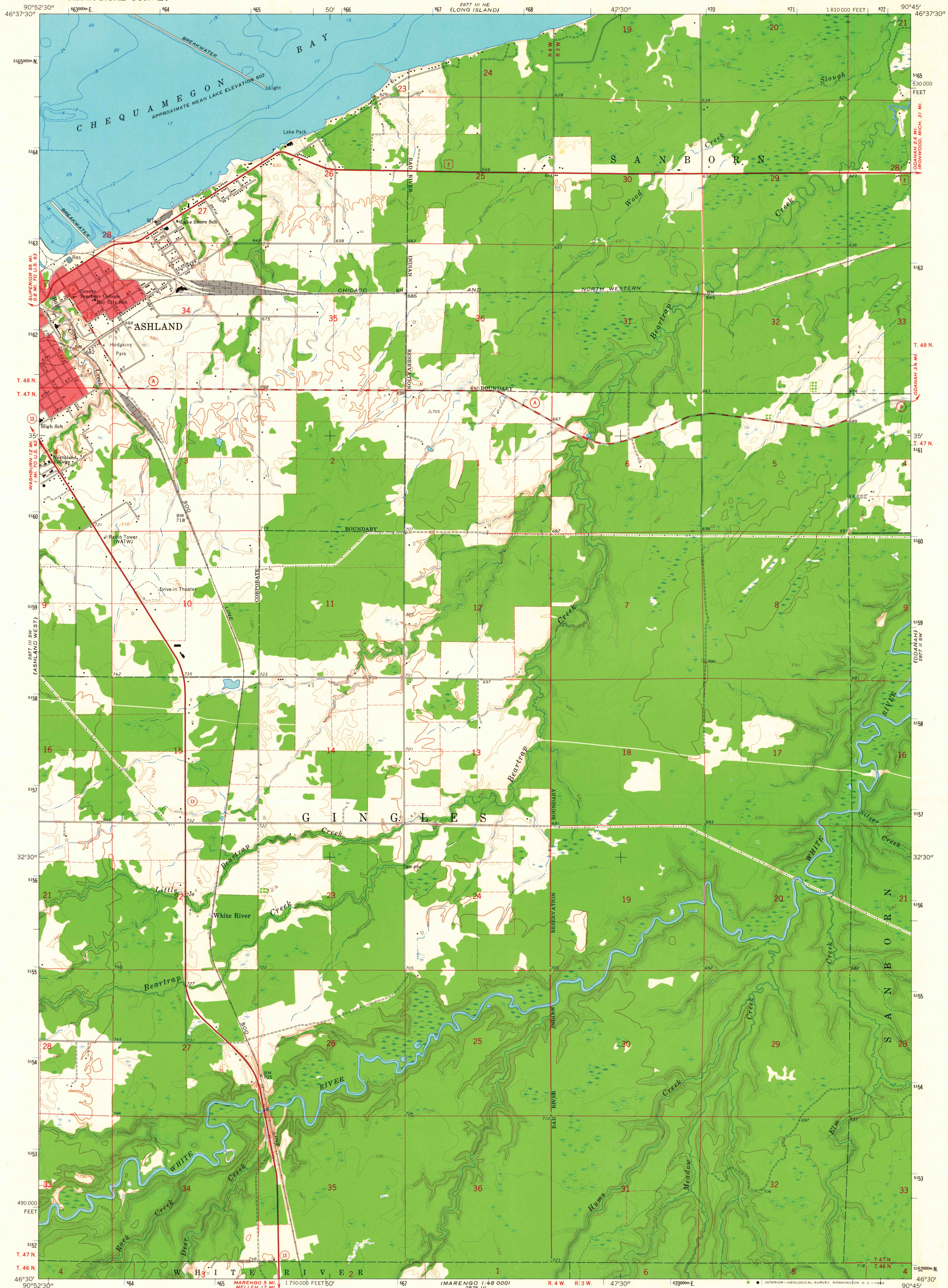
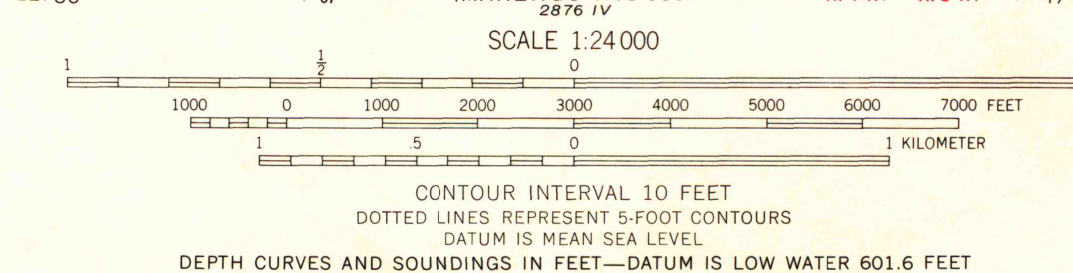


UNITED STATES
DEPARTMENT OF THE INTERIOR
GEOLOGICAL SURVEY

ASHLAND EAST QUADRANGLE
WISCONSIN—ASHLAND CO.
7.5 MINUTE SERIES (TOPOGRAPHIC)
SE/4 ASHLAND 15' QUADRANGLE



Mapped, edited, and published by the Geological Survey in cooperation with State of Wisconsin agencies
Control by USGS and USC&GS
Topography by photogrammetric methods from aerial photographs taken 1963. Field checked 1964
Selected hydrographic data compiled from U.S. Lake Survey Charts 961 (1961) and 964 (1962)
This information is not intended for navigational purposes
Polyconic projection. 1927 North American datum
10,000-foot grid based on Wisconsin coordinate system, north zone. 1000-meter Universal Transverse Mercator grid ticks, zone 15, shown in blue
Red tint indicates areas in which only landmark buildings are shown
Fine red dashed lines indicate selected fence and field lines where generally visible on aerial photographs. This information is uncorrected



MAP AND AIR PHOTO LIBRARY
University of Wisconsin



ROAD CLASSIFICATION
Heavy-duty ——— Light-duty ———
Medium-duty ——— Unimproved dirt ———
U.S. Route State Route

ASHLAND EAST, WIS.
SE/4 ASHLAND 15' QUADRANGLE
N4630—W9045/7.5

1964

AMS 2877 III SE—SERIES V861

1964
copy
1-1