

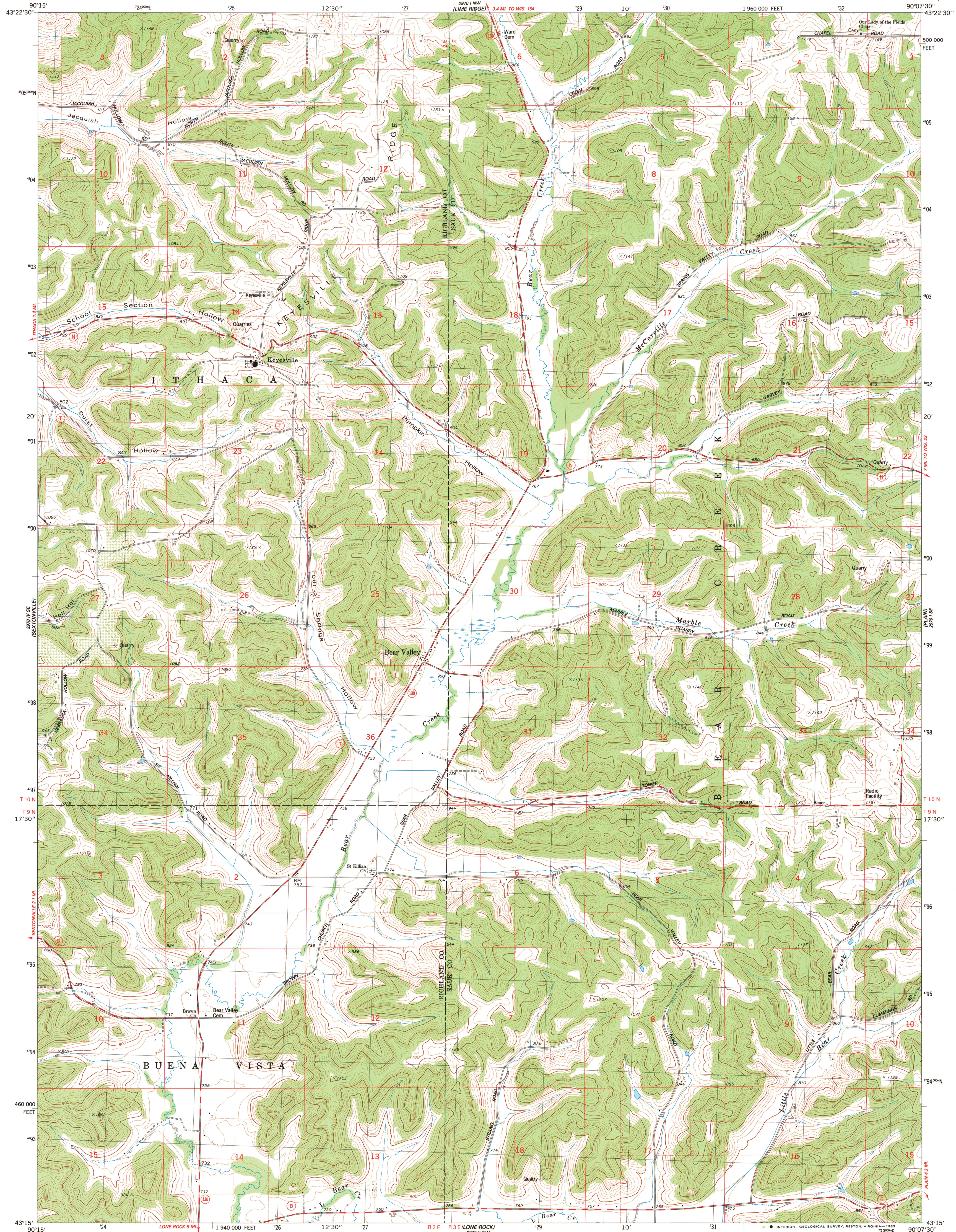
2011 NE
(ROCKBRIDGE)

UNITED STATES
DEPARTMENT OF THE INTERIOR
GEOLOGICAL SURVEY

STATE OF WISCONSIN
DIVISION OF HIGHWAYS
GEOLOGICAL AND NATURAL HISTORY SURVEY

BEAR VALLEY QUADRANGLE
WISCONSIN
7.5 MINUTE SERIES (TOPOGRAPHIC)
SW/4 PLAIN 15' QUADRANGLE

2011 NE
(LONEWILE)



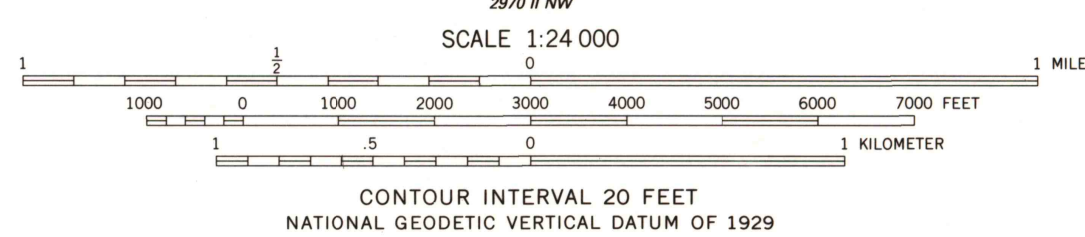
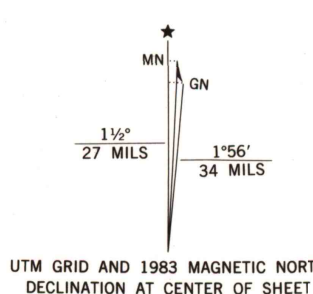
Mapped, edited, and published by the Geological Survey in cooperation with the Wisconsin Division of Highways and Wisconsin Geological and Natural History Survey. Control by USGS and NOS/NOAA.

Topography by photogrammetric methods from aerial photographs taken 1958. Revised from aerial photographs taken 1979. Field checked 1980. Map edited 1983.

Projection and 10,000-foot grid ticks: Wisconsin coordinate system, south zone (Lambert conformal conic). 1000-meter Universal Transverse Mercator grid, zone 15 1927 North American Datum.

To place on the predicted North American Datum 1983 move the projection lines 5 meters north and 11 meters east as shown by dashed corner ticks.

Fine red dashed lines indicate selected fence and field lines where generally visible on aerial photographs. This information is unchecked.



ROAD CLASSIFICATION

Primary highway, hard surface ——— Light-duty road, hard or improved surface ———

Secondary highway, hard surface ——— Unimproved road ———

Interstate Route U.S. Route State Route

BEAR VALLEY, WIS.
SW/4 PLAIN 15' QUADRANGLE
N4315-W9007.5/7.5

1983

DMA 2970 1 SW-SERIES V861

APR 19 1984