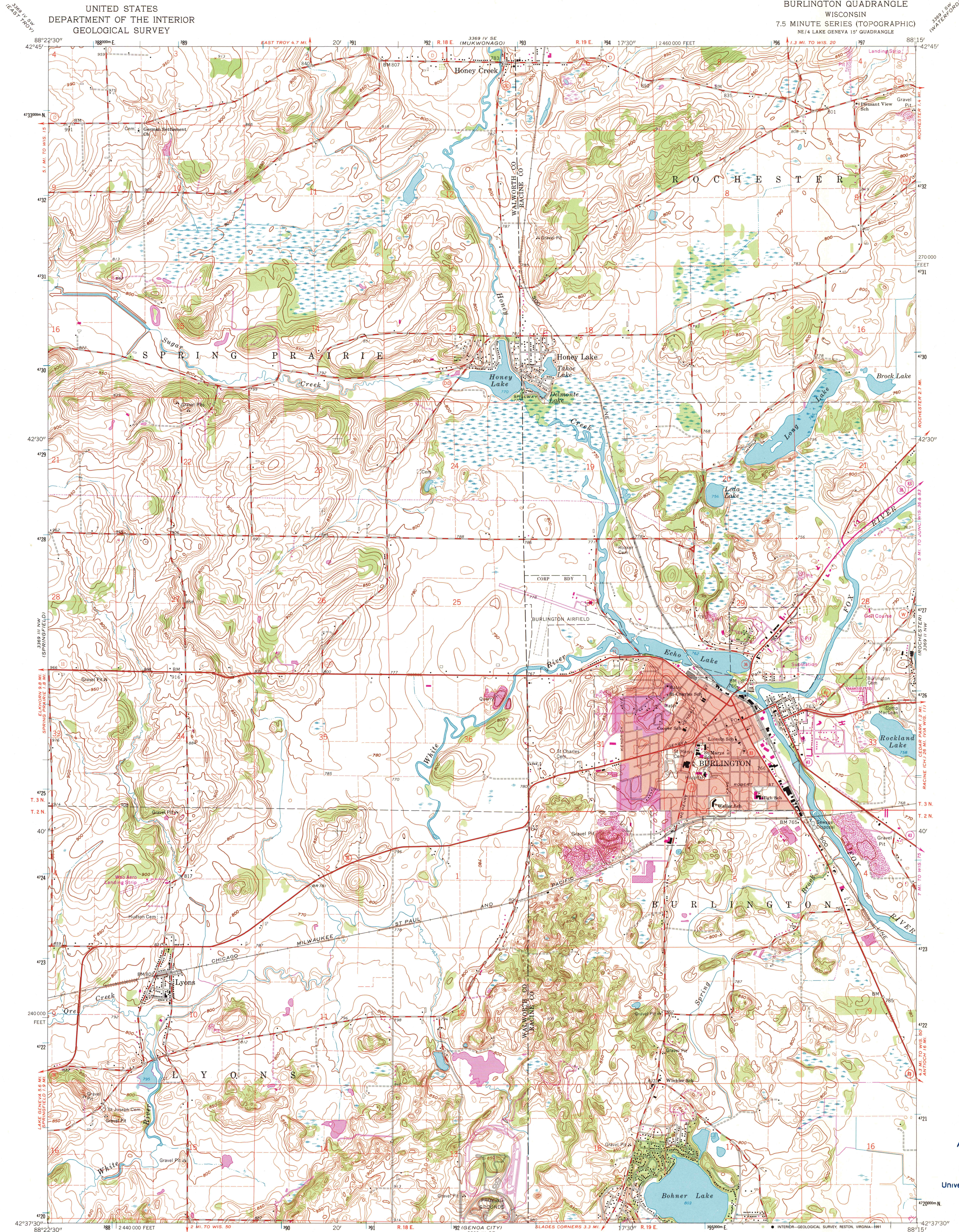


UNITED STATES
DEPARTMENT OF THE INTERIOR
GEOLOGICAL SURVEY

BURLINGTON QUADRANGLE
WISCONSIN
7.5 MINUTE SERIES (TOPOGRAPHIC)
NE 1/4 LAKE GENEVA 15' QUADRANGLE



Mapped, edited, and published by the Geological Survey

Control by USGS and USC&GS

Topography by photogrammetric methods from aerial photographs taken 1954-55. Field checked 1960

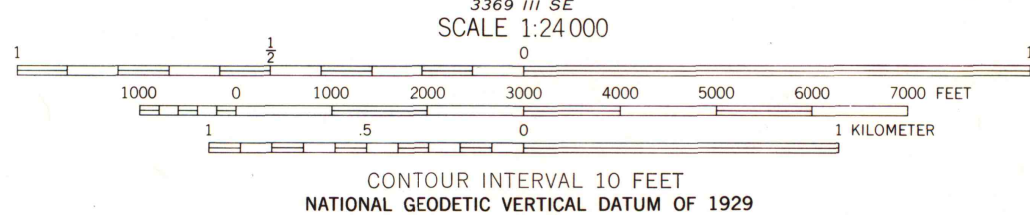
Polyconic projection. 1927 North American datum 10,000-foot grid based on Wisconsin coordinate system, south zone 1000-Meter Universal Transverse Mercator grid ticks, zone 16, shown in blue

Red tint indicates area in which only landmark buildings are shown
Fine red dashed lines indicate selected fence and field lines where generally visible on aerial photographs. This information is unchecked

Revisions shown in purple compiled from aerial photographs taken 1971. This information not field checked

Purple tint indicates extension of urban areas

Map photostereoscopic 1987
No major culture or drainage changes observed



THIS MAP COMPLIES WITH NATIONAL MAP ACCURACY STANDARDS
FOR SALE BY U.S. GEOLOGICAL SURVEY, DENVER, COLORADO 80225, OR RESTON, VIRGINIA 22092
AND WISCONSIN GEOLOGICAL AND NATURAL HISTORY SURVEY, MADISON, WISCONSIN 53706
A FOLDER DESCRIBING TOPOGRAPHIC MAPS AND SYMBOLS IS AVAILABLE ON REQUEST

The difference between 1927 North American Datum and North American Datum of 1983 (NAD 83) for 7.5-minute intersections is given in USGS Bulletin 1875. The NAD 83 is shown by dashed corner ticks

ROAD CLASSIFICATION
Heavy-duty ——— Light-duty ———
Medium-duty ——— Unimproved dirt ———
State Route ———

U.S. Regional
Depository Copy
DO NOT DISCARD

BURLINGTON, WIS.
NE 1/4 LAKE GENEVA 15' QUADRANGLE
42088F3-TF-024
PHOTOINSPECTED 1987
1987
DMA 3369 III NE-SERIES V861

A.H. ROBINSON
MAP LIBRARY
DEC 04 1991
University of Wisconsin
Madison

1987
Copy
1-1
X