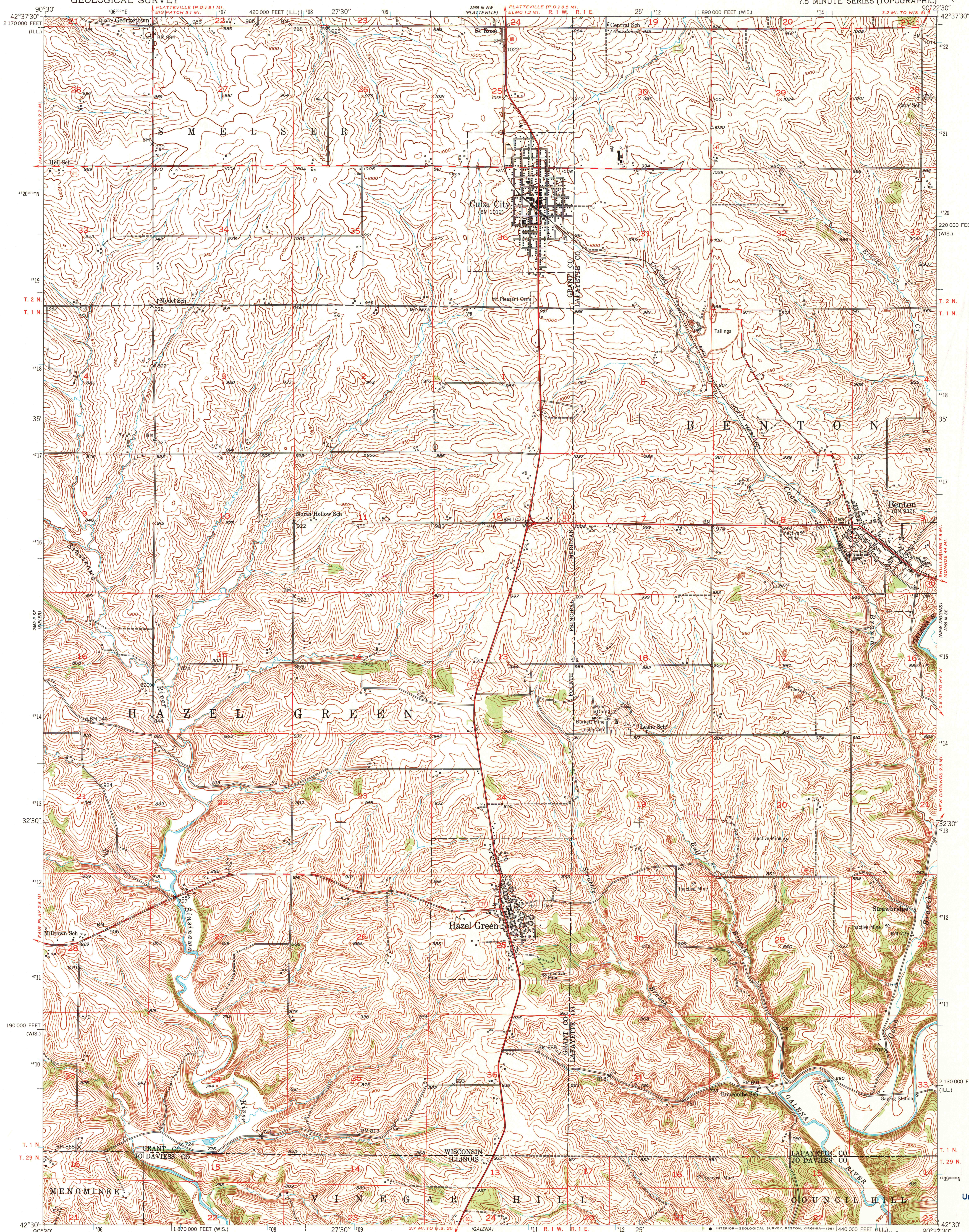


UNITED STATES
DEPARTMENT OF THE INTERIOR
GEOLOGICAL SURVEY

CUBA CITY QUADRANGLE
WISCONSIN-ILLINOIS
7.5 MINUTE SERIES (TOPOGRAPHIC)



Mapped, edited, and published by the Geological Survey

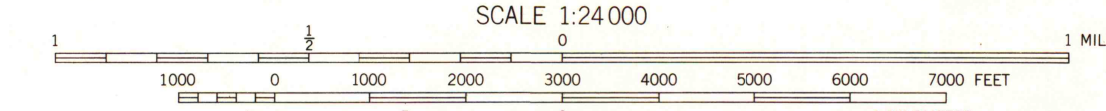
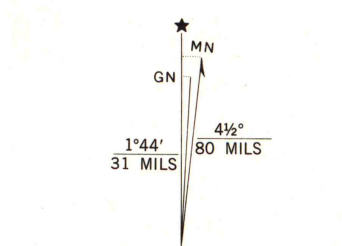
Control by USGS and USC&GS

Topography from aerial photographs by multiplex methods
Aerial photographs taken 1951. Field check 1952

Polyconic projection. 1927 North American datum
10,000-foot grids based on Wisconsin coordinate system,
south zone, and on Illinois coordinate system, west zone

The difference between 1927 North American Datum and North
American Datum of 1983 (NAD 83) for 7.5-minute intersections
is given in USGS Bulletin 1875. The NAD 83 is shown by
dashed corner ticks

Map photoinspected 1988
No major culture or drainage changes observed



CONTOUR INTERVAL 10 FEET
NATIONAL GEODETIC VERTICAL DATUM OF 1929

THIS MAP COMPLIES WITH NATIONAL MAP ACCURACY STANDARDS
FOR SALE BY U.S. GEOLOGICAL SURVEY, DENVER, COLORADO 80225, OR RESTON, VIRGINIA 22092
AND WISCONSIN GEOLOGICAL AND NATURAL HISTORY SURVEY, MADISON, WISCONSIN 53706
AND ILLINOIS GEOLOGICAL SURVEY, CHAMPAIGN, ILLINOIS 61820
A FOLDER DESCRIBING TOPOGRAPHIC MAPS AND SYMBOLS IS AVAILABLE ON REQUEST



U.S. Regional
Depository Copy
DO NOT DISCARD

CUBA CITY, WIS.-ILL.

42090-E4-TF-024

1952
PHOTOINSPECTED 1988
DMA 2969 III SW-SERIES V861

A.H. ROBINSON
MAP LIBRARY
DEC 04 1991
University of Wisconsin
Madison

1988
COPY
1-1
X