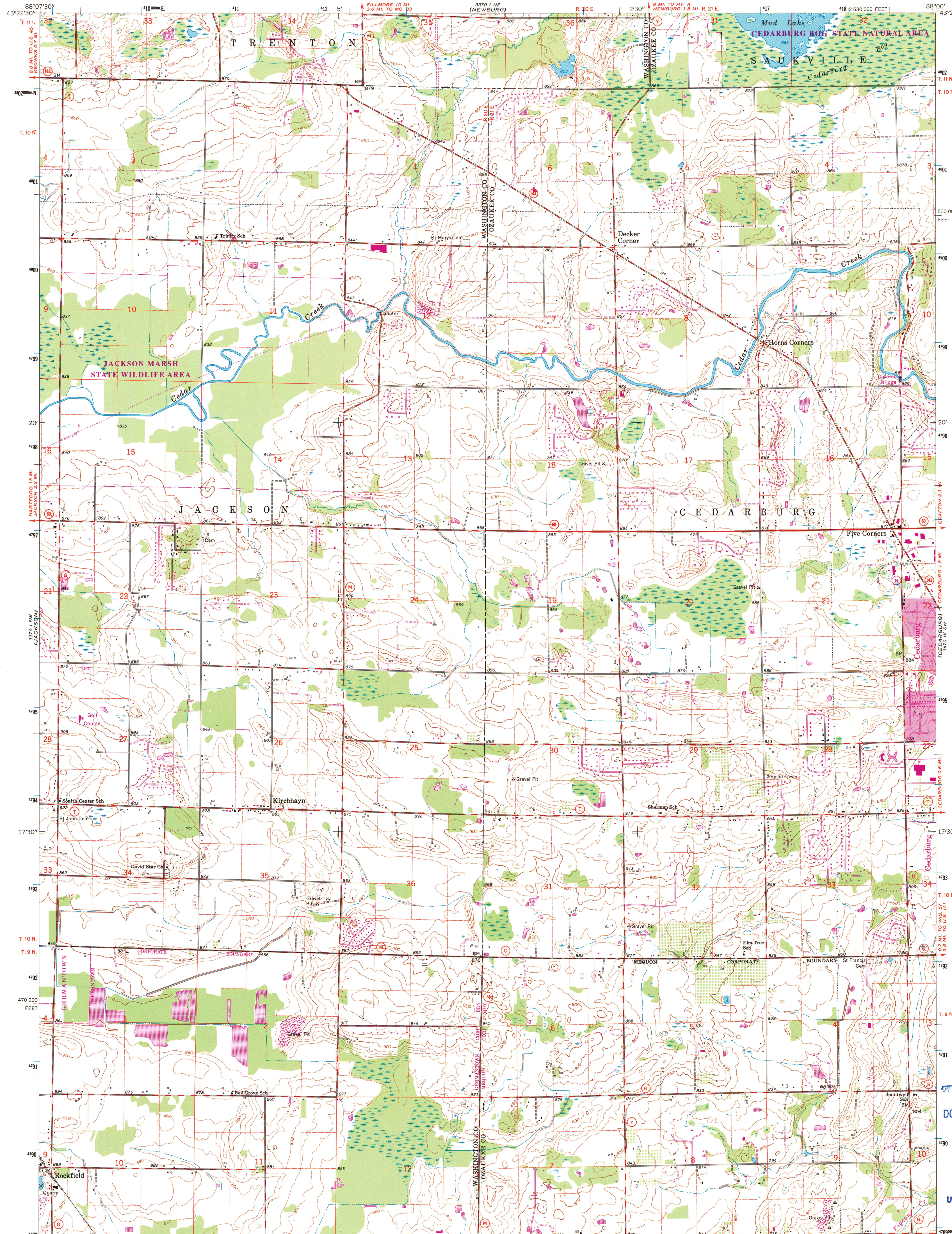


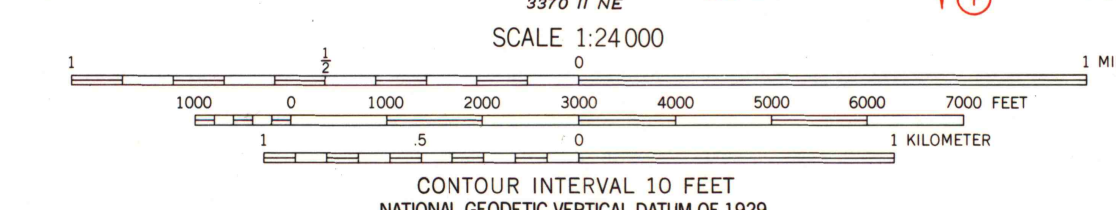
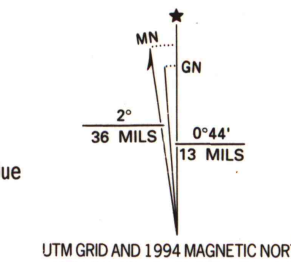
UNITED STATES  
DEPARTMENT OF THE INTERIOR  
GEOLOGICAL SURVEY

FIVE CORNERS QUADRANGLE  
WISCONSIN  
7.5 MINUTE SERIES (TOPOGRAPHIC)  
SE 1/4 WEST BEND 15' QUADRANGLE



Produced by the United States Geological Survey  
Control by USGS and NOS/NOAA

Topography by photogrammetric methods from aerial photographs taken 1954-55. Field checked 1959.  
Projection and 10,000-foot grid ticks: Wisconsin coordinate system, south zone (Lambert conformal conic).  
1000-meter Universal Transverse Mercator grid ticks, zone 16, shown in blue 1927 North American Datum (NAD 27).  
North American Datum of 1983 (NAD 83) is shown by dashed corner ticks. The values of the shift between NAD 27 and NAD 83 for 7.5-minute intersections are given in USGS Bulletin 1875.  
There may be private inholdings within the boundaries of the National or State reservations shown on this map.  
Fine red dashed lines indicate selected fence and field lines where generally visible on aerial photographs. This information is unchecked.



ROAD CLASSIFICATION	
Primary highway, hard surface	Light-duty road, hard or improved surface
Secondary highway, hard surface	Unimproved road
Interstate Route	U.S. Route
	State Route

Revisions shown in purple compiled in cooperation with State of Wisconsin agencies from aerial photographs taken 1992 and other sources. This information not field checked. Map edited 1994.  
Information shown in purple may not meet USGS content standards and may conflict with previously mapped contours.  
Purple tint indicates extension of urban areas.

**FIVE CORNERS, WIS.**  
SE 1/4 WEST BEND 15' QUADRANGLE  
43088-C1-TF-024  
1959  
REVISED 1994  
DMA 3370 1 SE - SERIES V861

U.S. Regional  
Depository Copy  
DO NOT DISCARD

A.H. ROBINSON  
MAP LIBRARY  
DEC 19 1994

University of Wisconsin  
Madison

1994  
COPY  
1-1