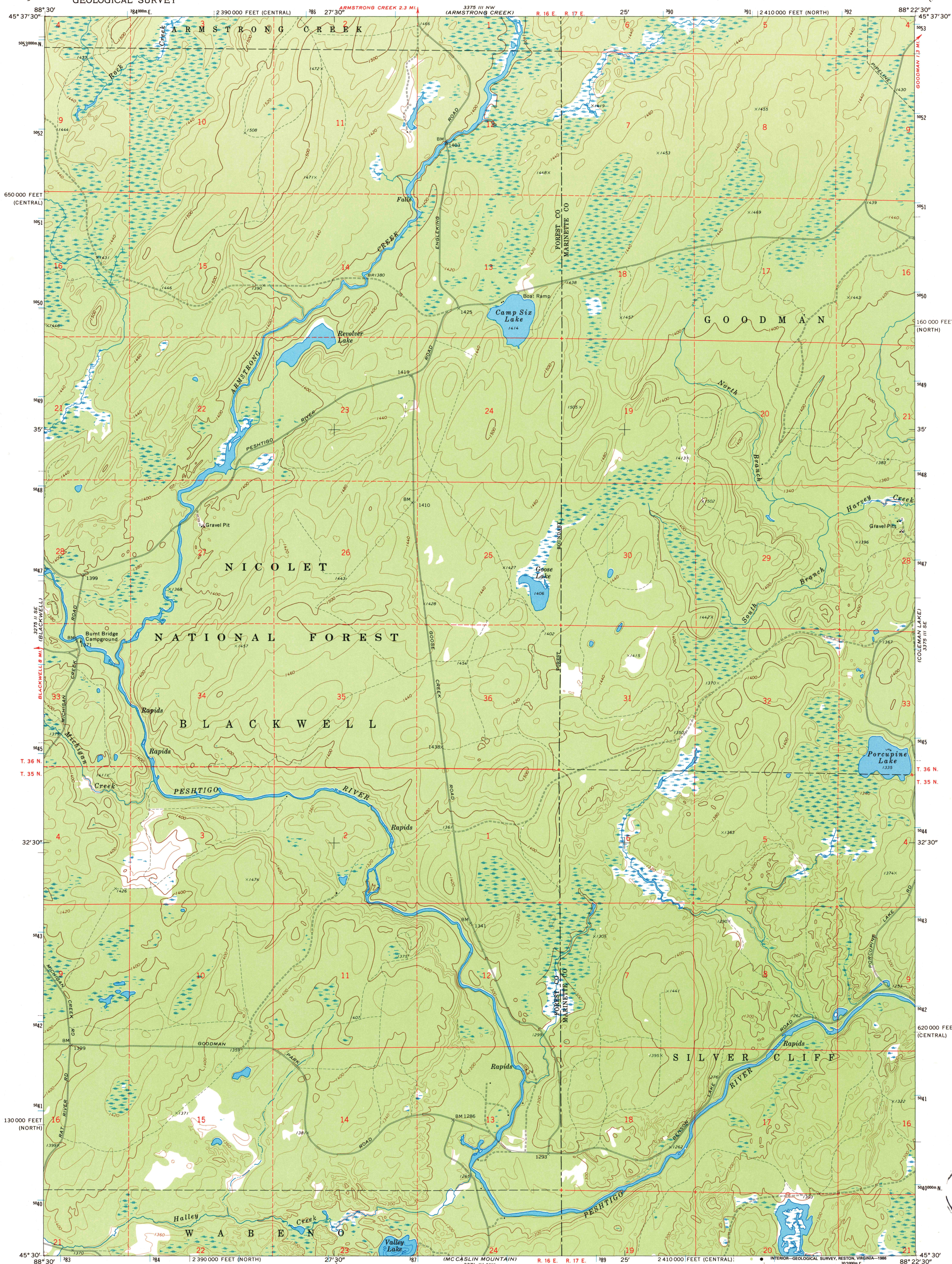
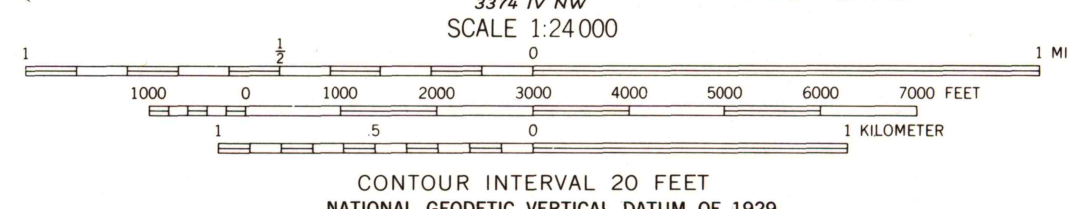


UNITED STATES  
DEPARTMENT OF THE INTERIOR  
GEOLOGICAL SURVEY

GOODMAN SW QUADRANGLE  
WISCONSIN  
7.5 MINUTE SERIES (TOPOGRAPHIC)



Mapped, edited, and published by the Geological Survey  
Control by USGS and USCGS  
Topography by photogrammetric methods from aerial  
photographs taken 1971. Field checked 1972  
Hydrography compiled from information furnished by  
Wisconsin Department of Natural Resources  
Projection: Wisconsin coordinate system, north zone  
(Lambert conformal conic)  
10,000-foot grid ticks based on Wisconsin coordinate  
system, north and central zones  
1000-meter Universal Transverse Mercator grid ticks,  
zone 16, shown in blue. 1927 North American datum  
Fine red dashed lines indicate selected fence and field lines where  
generally visible on aerial photographs. This information is unchecked



ROAD CLASSIFICATION  
Primary highway, hard surface  
Secondary highway, hard surface  
Unimproved road  
Interstate Route  
U.S. Route  
State Route

GOODMAN SW, WIS.  
45088-E4-TF-024  
1972  
DMA 3375 III SW-SERIES V861