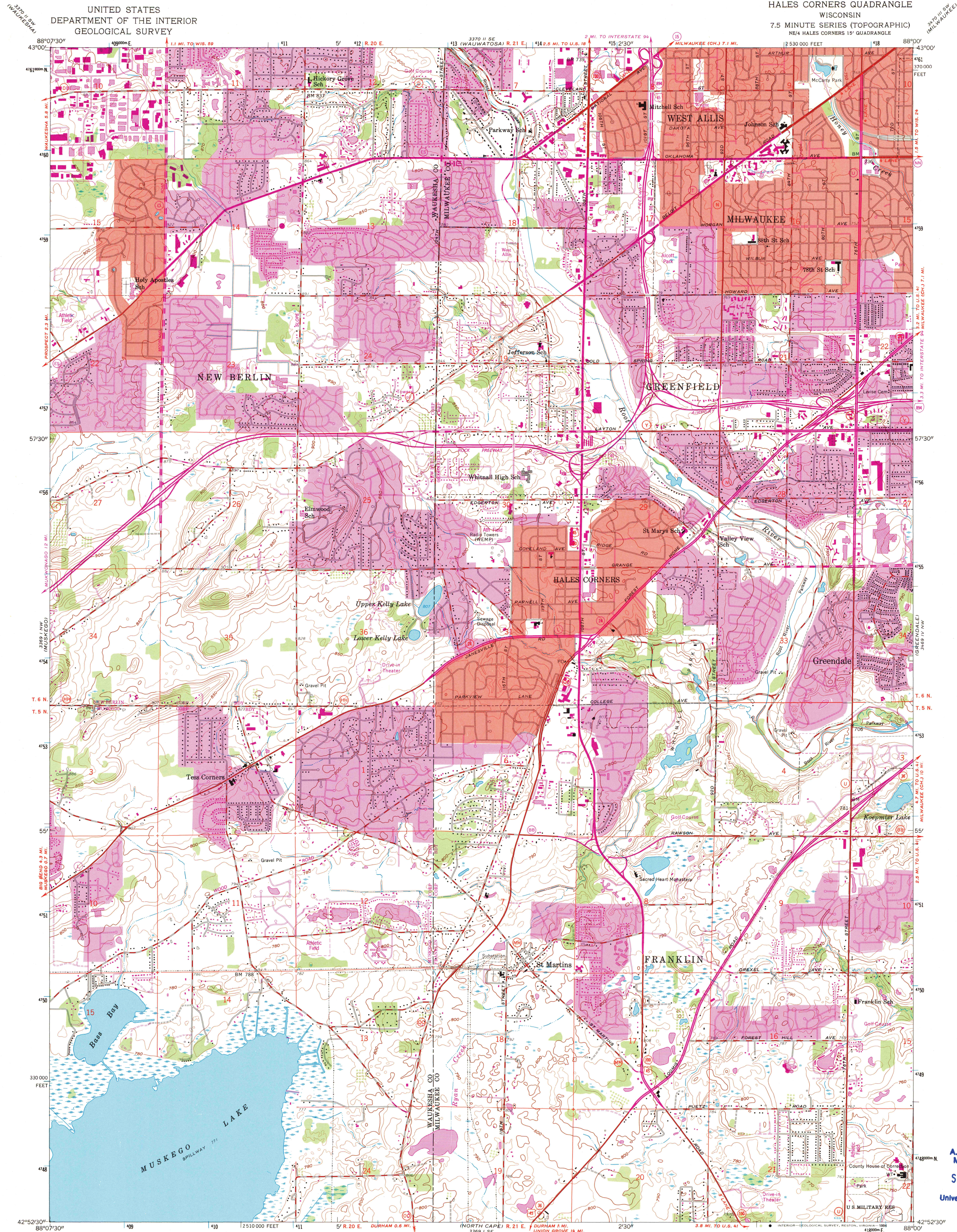


UNITED STATES
DEPARTMENT OF THE INTERIOR
GEOLOGICAL SURVEY

HALES CORNERS QUADRANGLE
WISCONSIN
7.5 MINUTE SERIES (TOPOGRAPHIC)
NE 1/4 HALES CORNERS 15' QUADRANGLE



Produced by the United States Geological Survey
Control by USGS and NOS/NOAA

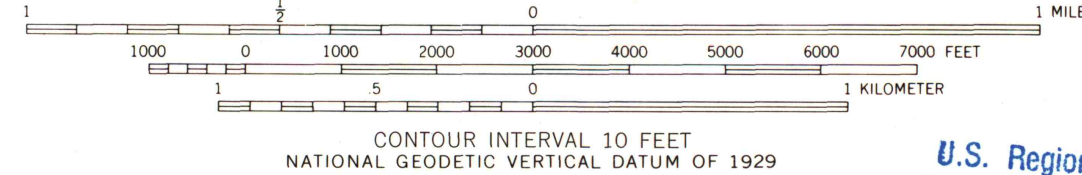
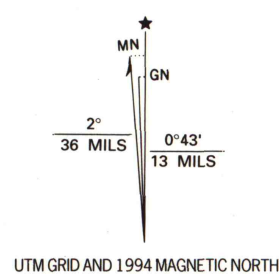
Topography by photogrammetric methods from aerial photographs
taken 1955. Field checked 1959.

Projection and 10,000-foot grid ticks: Wisconsin coordinate
system, south zone (Lambert conformal conic)
1000-meter Universal Transverse Mercator grid ticks, zone 16, shown in blue
1927 North American Datum (NAD 27)

North American Datum of 1983 (NAD 83) is shown by dashed corner ticks
The values of the shift between NAD 27 and NAD 83 for 7.5-minute
intersections are given in USGS Bulletin 1875

Red tint indicates areas in which only landmark buildings are shown

Purple tint indicates extension of urban areas



U.S. Regional
Depository Copy
DO NOT DISCARD



QUADRANGLE LOCATION

ROAD CLASSIFICATION	
Primary highway, hard surface	Light-duty road, hard or improved surface
Secondary highway, hard surface	Unimproved road
Interstate Route	U.S. Route
	State Route

HALES CORNERS, WIS.

NE 1/4 HALES CORNERS 15' QUADRANGLE
42088-H1-TF-024

1959
REVISED 1994
DMA 3369 1 NE-SERIES V861

A.H. ROBINSON
MAP LIBRARY

SEP 28 1994

University of Wisconsin
Madison

1994
copy
1-1

2-188