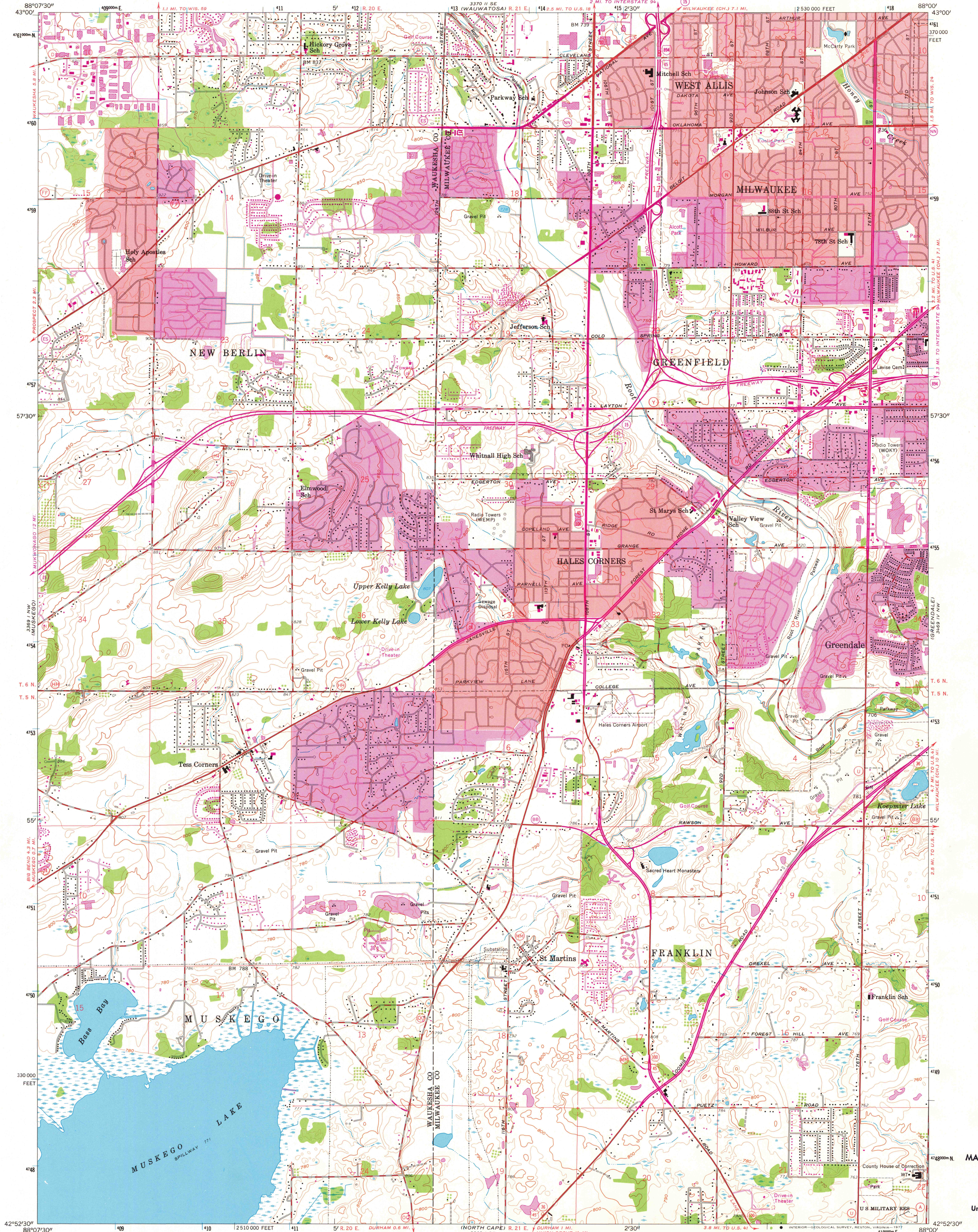


UNITED STATES
DEPARTMENT OF THE INTERIOR
GEOLOGICAL SURVEY

HALES CORNERS QUADRANGLE
WISCONSIN

7.5 MINUTE SERIES (TOPOGRAPHIC)
NE/4 HALES CORNERS 15' QUADRANGLE



Mapped, edited, and published by the Geological Survey

Control by USGS and USC&GS

Topography from aerial photographs by photogrammetric methods

Aerial photographs taken 1955. Field check 1959

Polyconic projection. 1927 North American datum

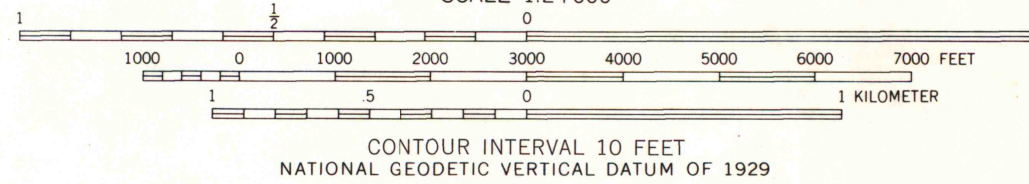
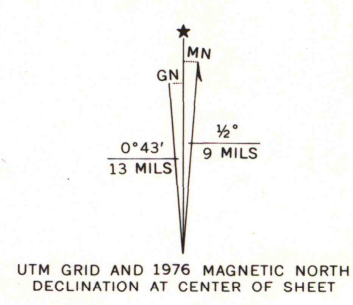
10,000-foot grid based on Wisconsin coordinate system, south zone

1000-meter Universal Transverse Mercator grid ticks, zone 16, shown in blue

Red tint indicates areas in which only landmark buildings are shown

Revisions shown in purple compiled from aerial photographs taken 1971 and 1976. This information not field checked

Purple tint indicates extension of urban areas



THIS MAP COMPLIES WITH NATIONAL MAP ACCURACY STANDARDS
FOR SALE BY U. S. GEOLOGICAL SURVEY, RESTON, VIRGINIA 22092
AND WISCONSIN GEOLOGICAL AND NATURAL HISTORY SURVEY, MADISON, WISCONSIN 53706
A FOLDER DESCRIBING TOPOGRAPHIC MAPS AND SYMBOLS IS AVAILABLE ON REQUEST



ROAD CLASSIFICATION
Primary highway, hard surface
Secondary highway, hard surface
Unimproved road
Light-duty road, hard or improved surface
Interstate Route
U. S. Route
State Route

HALES CORNERS, WIS.
NE/4 HALES CORNERS 15' QUADRANGLE
N4252.5-W8800/7.5

1959
PHOTOREVISED 1971 AND 1976
AMS 3369 I NE-SERIES V861

MAP AND AIR PHOTO
LIBRARY

NOV 7 - 1978

University of Wisconsin
Madison

1976
copy
1-1