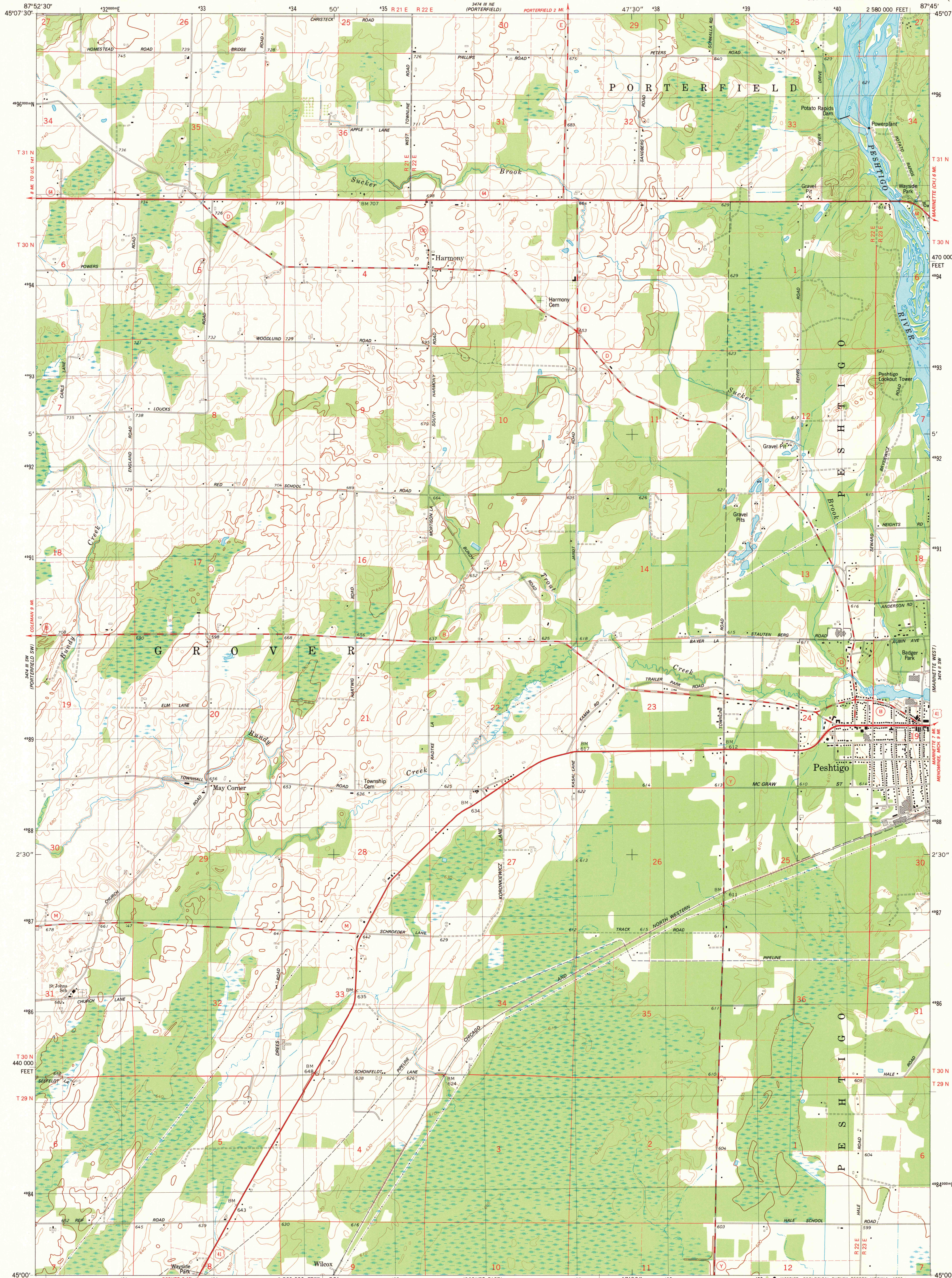


UNITED STATES
DEPARTMENT OF THE INTERIOR
GEOLOGICAL SURVEY

HARMONY QUADRANGLE
WISCONSIN-MARINETTE CO.
7.5 MINUTE SERIES (TOPOGRAPHIC)
SE/4 PORTERFIELD 15' QUADRANGLE

3474 III NE
(CHAPPEE 6-1001)



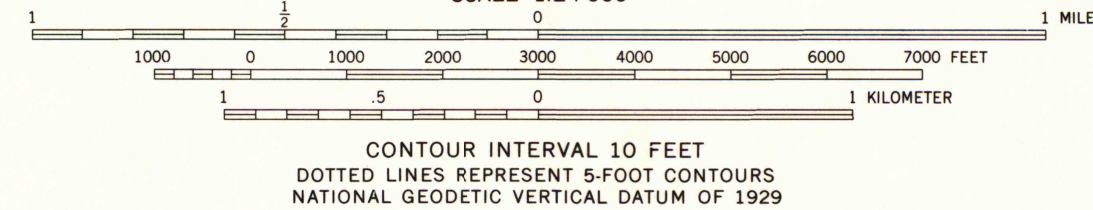
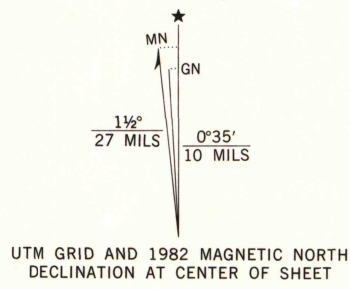
Mapped, edited, and published by the Geological Survey in cooperation with the Wisconsin Division of Highways and Wisconsin Geological and Natural History Survey. Control by USGS and NOS/NOAA.

Topography by photogrammetric methods from aerial photographs taken 1954. Revised from aerial photographs taken 1979. Field checked 1980. Map edited 1982.

Hydrography compiled from information furnished by Wisconsin Department of Natural Resources.

Projection and 10,000-foot grid ticks: Wisconsin coordinate system, central zone (Lambert conformal conic). 1000-meter Universal Transverse Mercator grid, zone 16. 1927 North American Datum.

To place on the predicted North American Datum 1983 move the projection lines 5 meters north and 6 meters east as shown by dashed corner ticks.



THIS MAP COMPLIES WITH NATIONAL MAP ACCURACY STANDARDS FOR SALE BY U. S. GEOLOGICAL SURVEY, RESTON, VIRGINIA 22092 AND WISCONSIN GEOLOGICAL AND NATURAL HISTORY SURVEY, MADISON, WISCONSIN 53706. A FOLDER DESCRIBING TOPOGRAPHIC MAPS AND SYMBOLS IS AVAILABLE ON REQUEST.



ROAD CLASSIFICATION

Primary highway, hard surface. Light-duty road, hard or improved surface.

Secondary highway, hard surface. Unimproved road.

Interstate Route. U. S. Route. State Route.

HARMONY, WIS.
SE/4 PORTERFIELD 15' QUADRANGLE
N4500-W8745/7.5
1982
DMA 3474 III SE-SERIES V861

A.H. ROBINSON
MAP 1 1982
OCT 11 1983
University of Wisconsin
Madison

1982
Copy
1-1