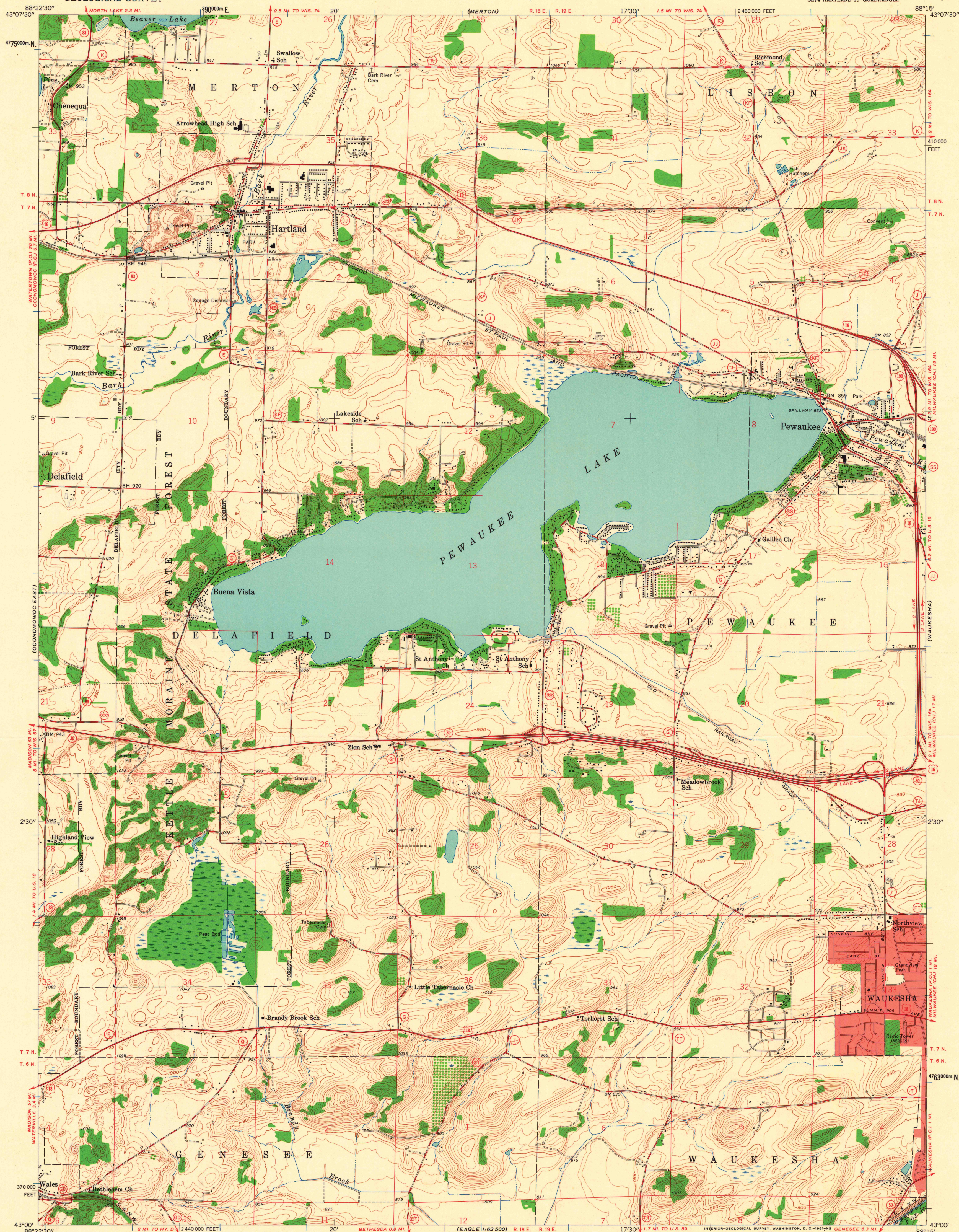
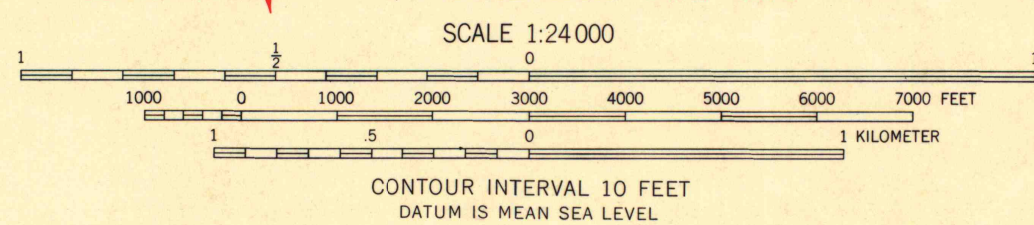


UNITED STATES
DEPARTMENT OF THE INTERIOR
GEOLOGICAL SURVEY

HARTLAND QUADRANGLE
WISCONSIN - WAUKESHA CO.
7.5 MINUTE SERIES (TOPOGRAPHIC)
SE 1/4 HARTLAND 15' QUADRANGLE



Mapped, edited, and published by the Geological Survey
Control by USGS and USC&GS
Topography from aerial photographs by photogrammetric methods
Aerial photographs taken 1954-1955. Field check 1959
Polyconic projection. 1927 North American datum
10,000-foot grid based on Wisconsin coordinate system, south zone
1000-meter Universal Transverse Mercator grid ticks,
zone 16, shown in blue
Red tint indicates area in which only
landmark buildings are shown



ROAD CLASSIFICATION
Heavy-duty ——— Light-duty ———
Medium-duty ——— Unimproved dirt ———
U.S. Route ——— State Route ———



HARTLAND, WIS.
SE 1/4 HARTLAND 15' QUADRANGLE
N 4300 - W 8815 / 7.5

THIS MAP COMPLIES WITH NATIONAL MAP ACCURACY STANDARDS
FOR SALE BY U.S. GEOLOGICAL SURVEY, WASHINGTON 25, D.C.
AND BY THE WISCONSIN GEOLOGICAL AND NATURAL HISTORY SURVEY, MADISON 6, WISCONSIN
A FOLDER DESCRIBING TOPOGRAPHIC MAPS AND SYMBOLS IS AVAILABLE ON REQUEST

MAP AND AIR PHOTO LIBRARY
University of Wisconsin

1959

FOR LIBRARY
USE ONLY

1959
Copy
1-1