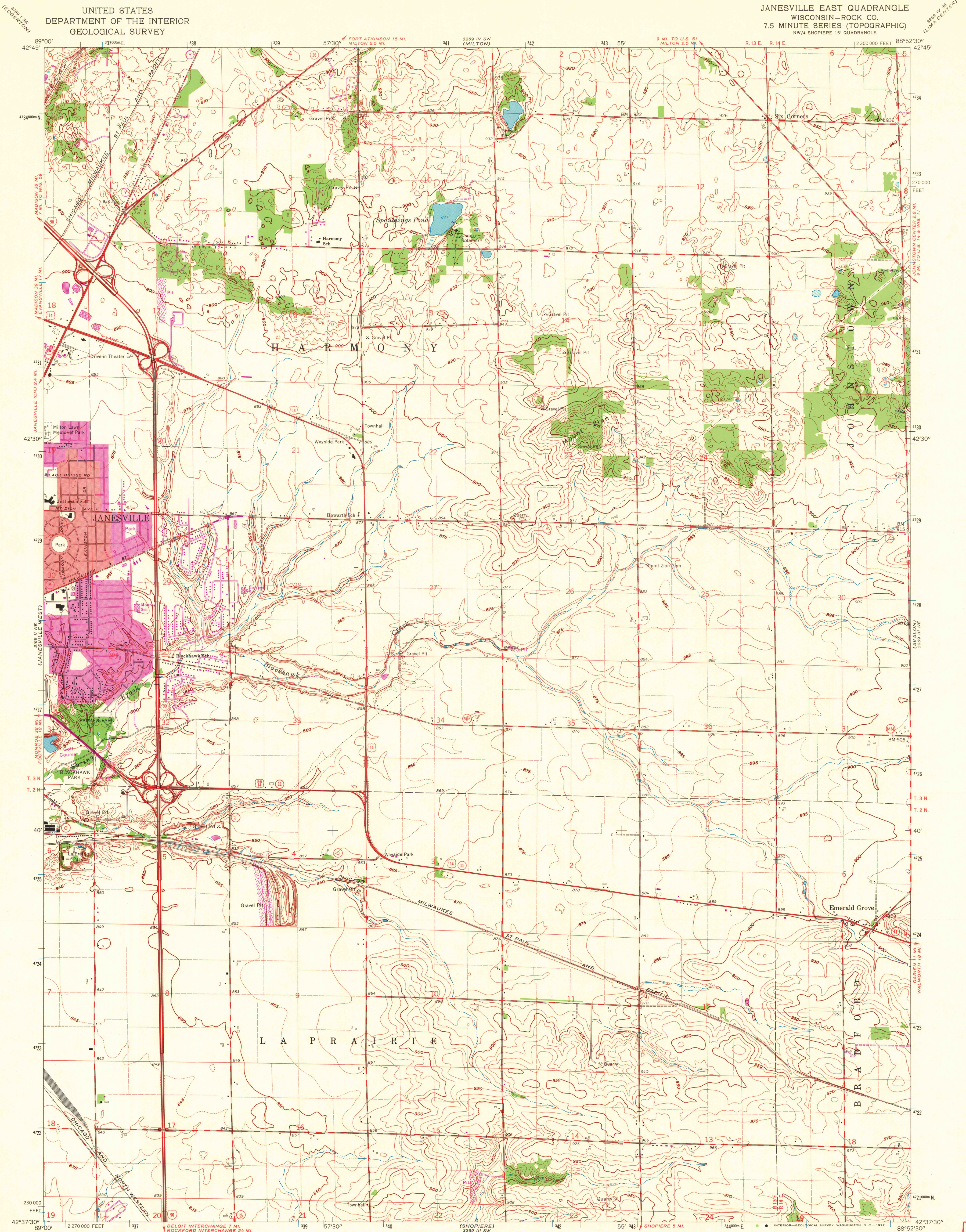
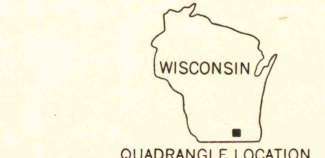
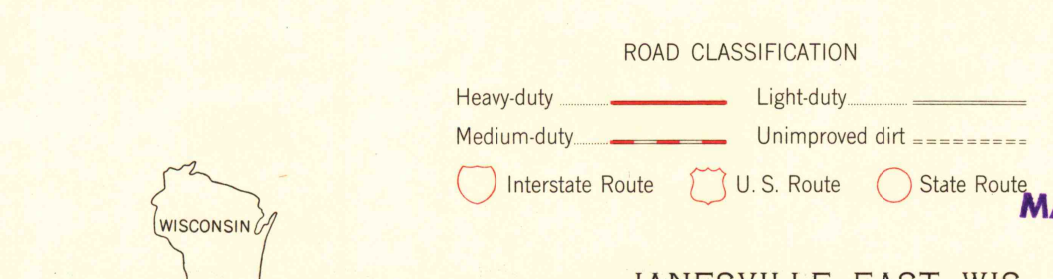
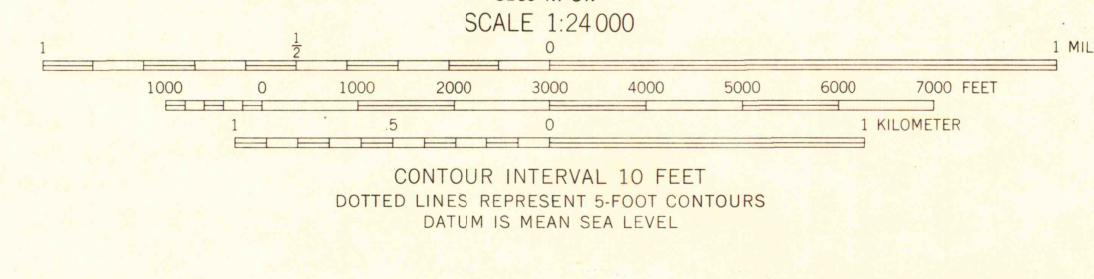
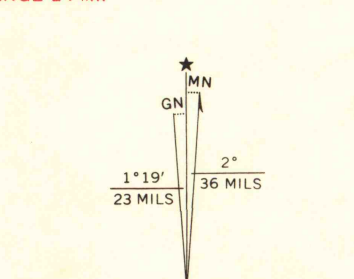


UNITED STATES  
DEPARTMENT OF THE INTERIOR  
GEOLOGICAL SURVEY

JANESVILLE EAST QUADRANGLE  
WISCONSIN-ROCK CO.  
7.5 MINUTE SERIES (TOPOGRAPHIC)  
NW/4 SHOPIERE 15' QUADRANGLE



Mapped, edited, and published by the Geological Survey  
Control by USGS and USC&GS  
Topography by photogrammetric methods from aerial  
photographs taken 1955. Field checked 1961  
Polyconic projection. 1927 North American datum  
10,000-foot grid based on Wisconsin coordinate system, south zone  
1000-meter Universal Transverse Mercator grid ticks,  
zone 16, shown in blue  
Red tint indicates area in which only landmark buildings are shown  
Fine red dashed lines indicate selected fence and field lines where  
generally visible on aerial photographs. This information is unchecked  
Revisions shown in purple compiled from aerial photographs  
taken 1971. This information not field checked  
Purple tint indicates extension of urban areas



JANESVILLE EAST, WIS.  
NW/4 SHOPIERE 15' QUADRANGLE  
N4237.5-W8852.5/7.5

1961  
PHOTOREVISED 1971  
AMS 3269 III NW-SERIES V861

MAP AND AIR PHOTO  
LIBRARY

AUG 17 1972

University of Wisconsin

1971  
Copy  
1-1