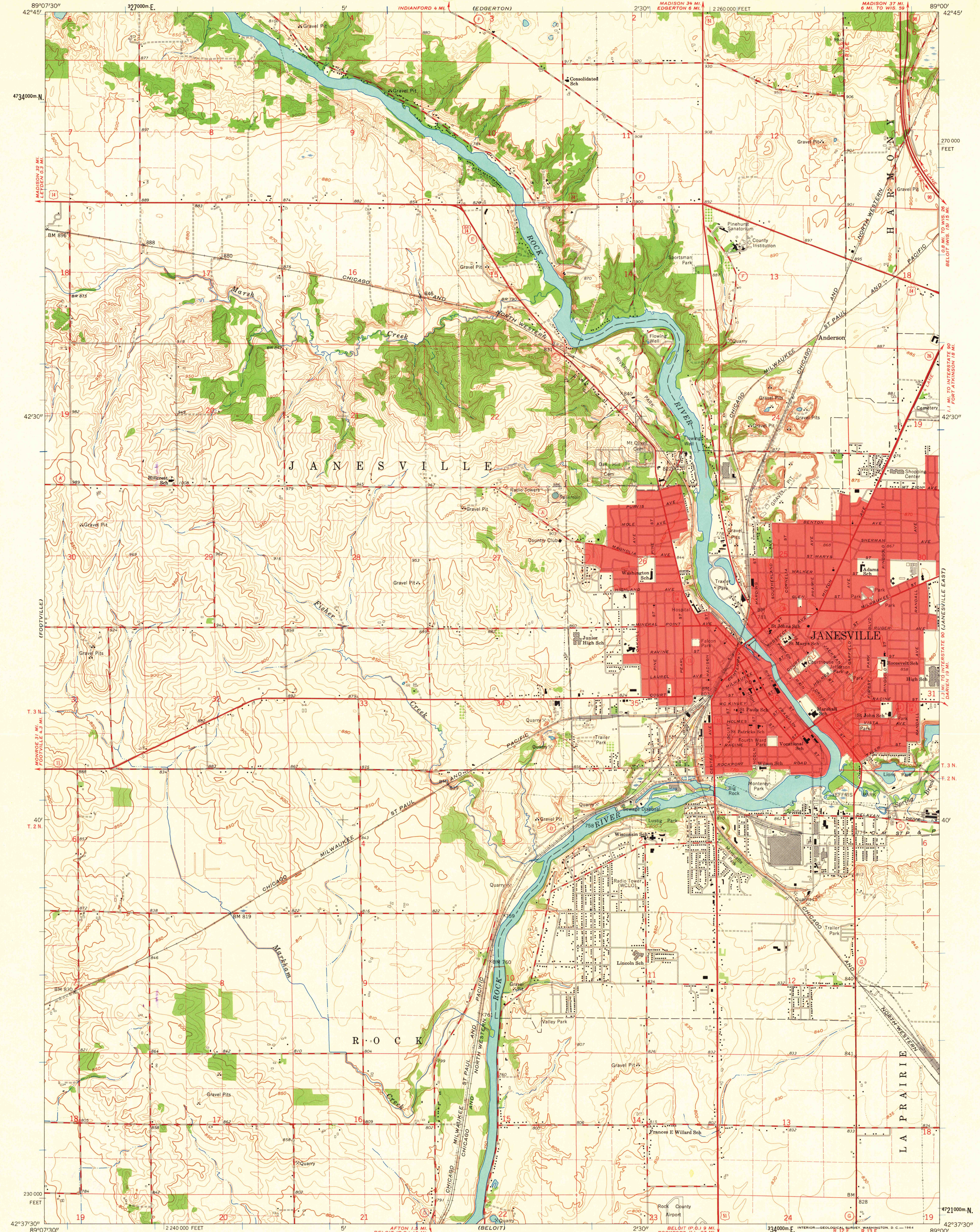


UNITED STATES  
DEPARTMENT OF THE INTERIOR  
GEOLOGICAL SURVEY

JANESVILLE WEST QUADRANGLE  
WISCONSIN-ROCK CO.  
7.5 MINUTE SERIES (TOPOGRAPHIC)  
NE 1/4 JANESVILLE 15' QUADRANGLE  
MADISON 37 MI.  
6 MI. TO WIS. 59



Mapped, edited, and published by the Geological Survey  
in cooperation with State of Wisconsin agencies

Control by USGS and USC&GS

Topography by photogrammetric methods from aerial  
photographs taken 1960. Field checked 1961

Polyconic projection. 1927 North American datum  
10,000-foot grid based on Wisconsin coordinate system, south zone  
1000-meter Universal Transverse Mercator grid ticks,  
zone 16, shown in blue

Red tint indicates areas in which only landmark buildings are shown

Fine red dashed lines indicate selected fence and field lines where  
generally visible on aerial photographs. This information is unchecked

TRUE NORTH  
MAGNETIC NORTH  
APPROXIMATE MEAN  
DECLINATION, 1961

SCALE 1:24,000  
1 0 1000 2000 3000 4000 5000 6000 7000 FEET  
1 0 5 10 15 20 KILOMETER  
CONTOUR INTERVAL 10 FEET  
DOTTED LINES REPRESENT 5-FOOT CONTOURS  
DATUM IS MEAN SEA LEVEL

THIS MAP COMPLIES WITH NATIONAL MAP ACCURACY STANDARDS.  
FOR SALE BY U. S. GEOLOGICAL SURVEY, WASHINGTON 25, D. C.  
AND BY THE WISCONSIN GEOLOGICAL AND NATURAL HISTORY SURVEY, MADISON 6, WISCONSIN  
A FOLDER DESCRIBING TOPOGRAPHIC MAPS AND SYMBOLS IS AVAILABLE ON REQUEST

WISCONSIN  
QUADRANGLE LOCATION  
MAP AND AIR PHOTO LIBRARY  
University of Wisconsin

ROAD CLASSIFICATION  
Heavy-duty ——— Light-duty ———  
Medium-duty ——— Unimproved dirt ———  
Interstate Route U.S. Route State Route

JANESVILLE WEST, WIS.  
NE 1/4 JANESVILLE 15' QUADRANGLE  
N 42° 37' 30" — W 89° 00' 00"

1961

LIBRARY USE ONLY

1961  
Copy  
1-1