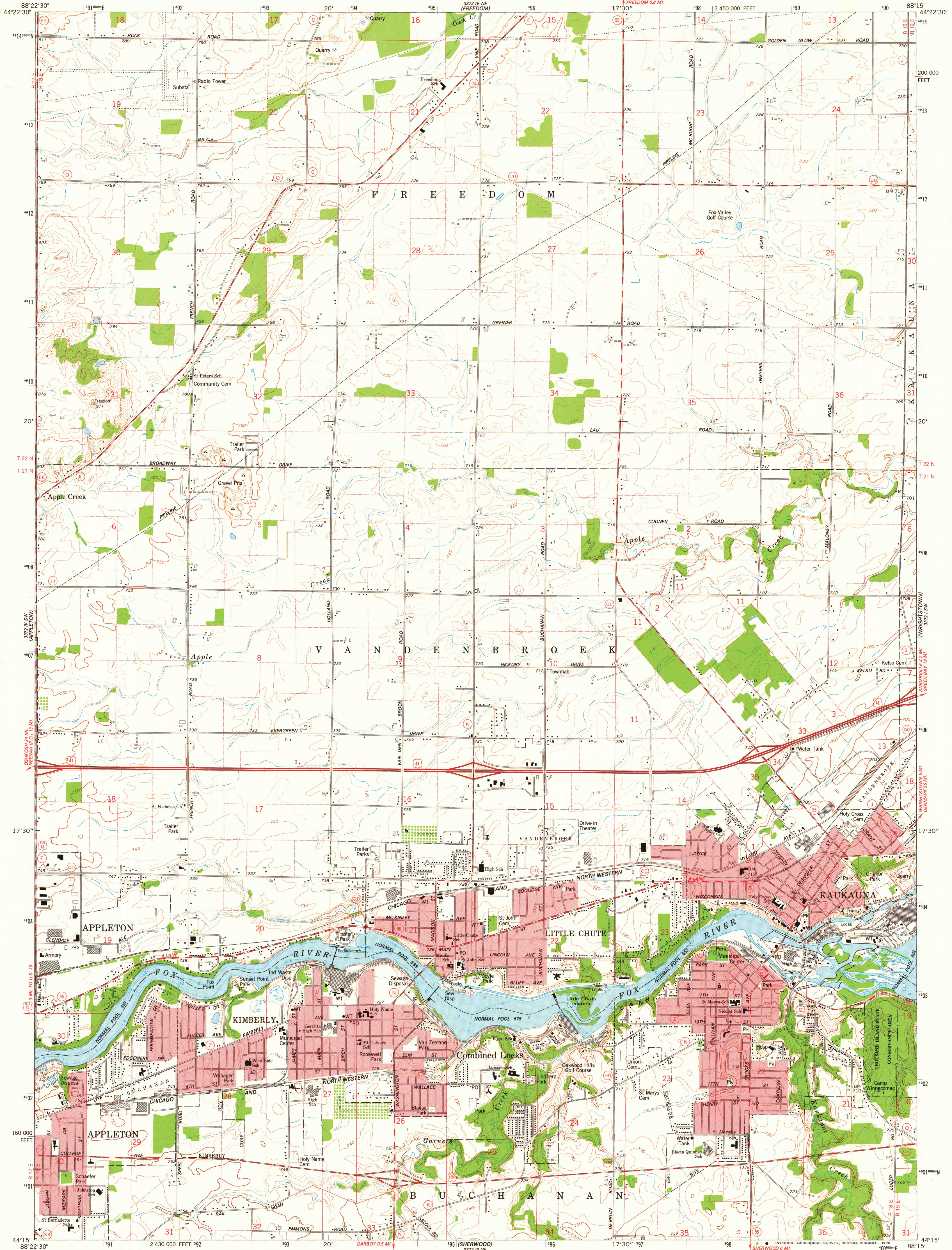


UNITED STATES
DEPARTMENT OF THE INTERIOR
GEOLOGICAL SURVEY

KAUKAUNA QUADRANGLE
WISCONSIN—OUTAGAMIE CO.
7.5 MINUTE SERIES (TOPOGRAPHIC)

SE/4 APPLETON 15' QUADRANGLE



Mapped, edited, and published by the Geological Survey

Control by USGS and NOS/NOAA

Topography by photogrammetric methods from aerial photographs taken 1973. Field checked 1974

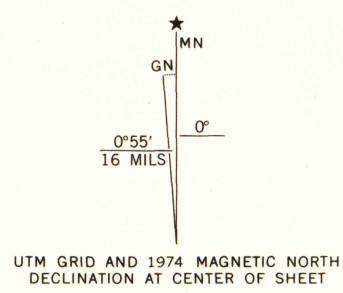
Selected hydrographic data compiled from U. S. Lake Survey Chart 720 (1973). This information is not intended for navigational purposes

Projection and 10,000-foot grid ticks: Wisconsin coordinate system, central zone (Lambert conformal conic)

1000-meter Universal Transverse Mercator grid ticks, zone 16, shown in blue. 1927 North American datum

Red tint indicates areas in which only landmark buildings are shown

Fine red dashed lines indicate selected fence and field lines where generally visible on aerial photographs. This information is unchecked



SCALE 1:24,000

CONTOUR INTERVAL 10 FEET

DOTTED LINES REPRESENT 5-FOOT CONTOURS

NATIONAL GEODETIC VERTICAL DATUM OF 1929

DEPTH CURVES AND SOUNDINGS IN FEET—DATUM IS NORMAL POOL LEVEL

THIS MAP COMPLIES WITH NATIONAL MAP ACCURACY STANDARDS

FOR SALE BY U. S. GEOLOGICAL SURVEY, RESTON, VIRGINIA 22092

AND WISCONSIN GEOLOGICAL AND NATURAL HISTORY SURVEY, MADISON, WISCONSIN 53706

A FOLDER DESCRIBING TOPOGRAPHIC MAPS AND SYMBOLS IS AVAILABLE ON REQUEST

ROAD CLASSIFICATION

Primary highway, hard surface

Secondary highway, hard surface

Unimproved road

Interstate Route

U. S. Route

State Route

Light-duty road, hard or improved surface

Unimproved road

Interstate Route

U. S. Route

State Route

KAUKAUNA, WIS.

SE/4 APPLETON 15' QUADRANGLE

N4415-W8815/7.5

1974

AMS 3372 IV SE—SERIES V861

MAP AND AIR PHOTO LIBRARY

JAN 9 - 1979

University of Wisconsin
Madison

1974
copy
1-1