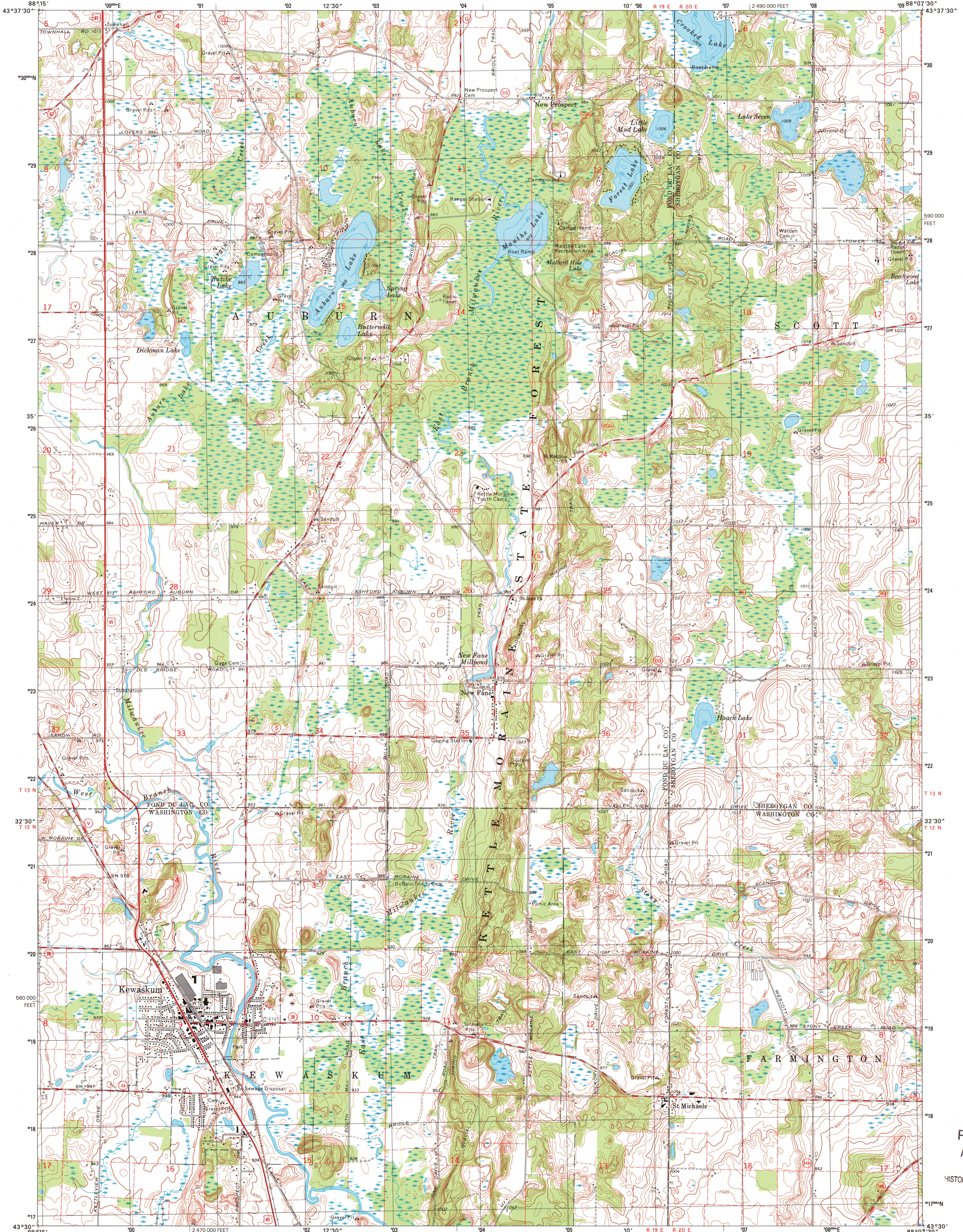




U.S. DEPARTMENT OF THE INTERIOR
U.S. GEOLOGICAL SURVEY

STATE OF WISCONSIN
DIVISION OF HIGHWAYS
GEOLOGICAL AND NATURAL HISTORY SURVEY

KEWASKUM QUADRANGLE
WISCONSIN
7.5-MINUTE SERIES (TOPOGRAPHIC)



Produced by the United States Geological Survey

Derived from imagery taken 1973 and other sources. Photomapped using imagery taken 1999; no major culture or drainage changes observed. PLSS and survey control current as of 1974.

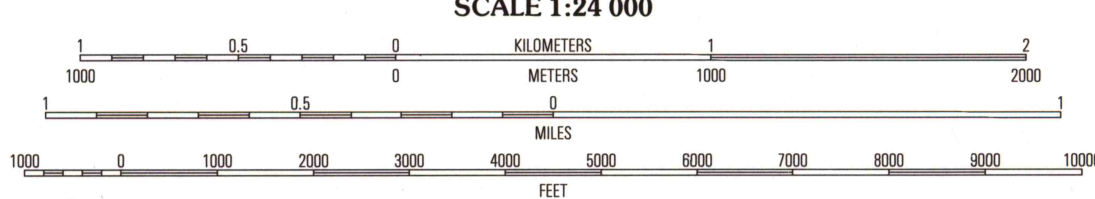
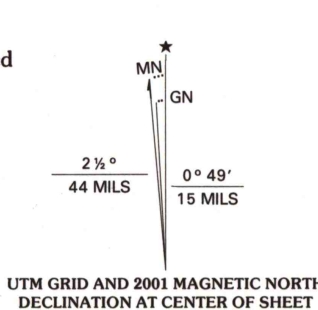
Boundaries, other than corporate, revised 2001.

North American Datum of 1927 (NAD 27). Projection and 10 000-foot ticks: Wisconsin coordinate system, south zone (Lambert conformal conic).

1000-meter Universal Transverse Mercator grid, zone 16.

North American Datum of 1983 (NAD 83) is shown by dashed corner ticks. The values of the shift between NAD 27 and NAD 83 for 7.5-minute intersections are obtainable from National Geodetic Survey NADCON software.

There may be private inholdings within the boundaries of the National or State reservations shown on this map.



CONTOUR INTERVAL 10 FEET
NATIONAL GEODETIC VERTICAL DATUM OF 1929
TO CONVERT FROM FEET TO METERS, MULTIPLY BY 0.3048

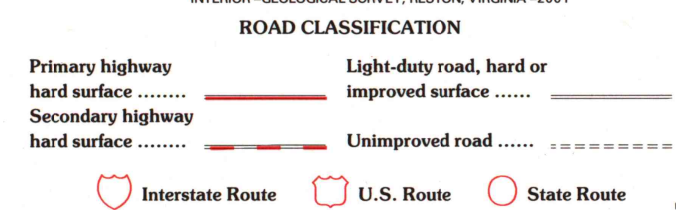
THIS MAP COMPLIES WITH NATIONAL MAP ACCURACY STANDARDS
FOR SALE BY U.S. GEOLOGICAL SURVEY, P.O. BOX 25286, DENVER, COLORADO 80225
AND WISCONSIN GEOLOGICAL AND NATURAL HISTORY SURVEY, MADISON, WISCONSIN 53706
A FOLDER DESCRIBING TOPOGRAPHIC MAPS AND SYMBOLS IS AVAILABLE ON REQUEST



QUADRANGLE LOCATION

1	2	3
4	5	6
7	8	9

ADJOINING 7.5 QUADRANGLE NAMES



KEWASKUM, WI
1999

NIMA 3371 II SW-SERIES V861

RECEIVED
AUG 31 2001
U.S. GEOLOGICAL SURVEY
HISTORICAL MAP ARCHIVES

