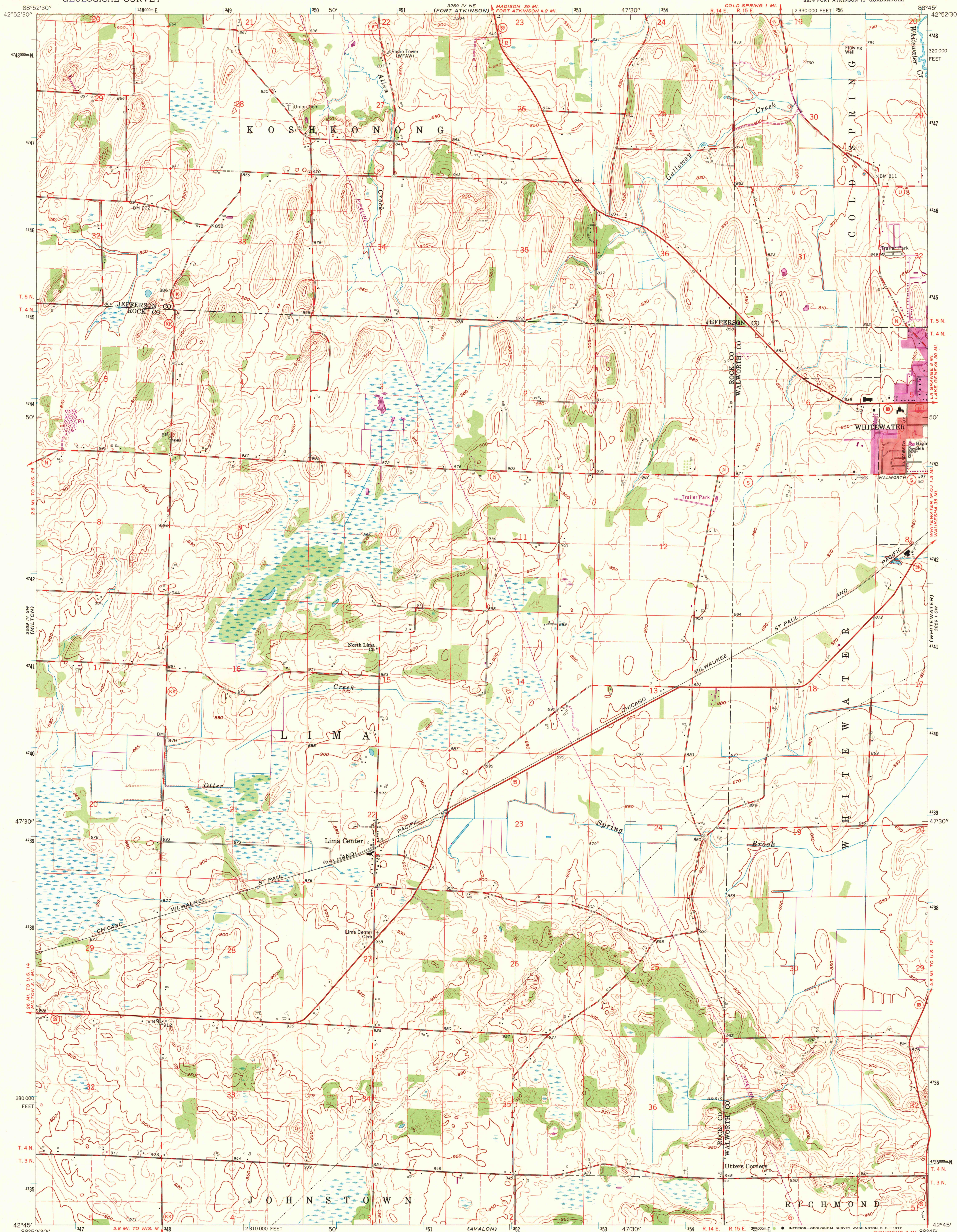


UNITED STATES  
DEPARTMENT OF THE INTERIOR  
GEOLOGICAL SURVEY

LIMA CENTER QUADRANGLE  
WISCONSIN  
7.5 MINUTE SERIES (TOPOGRAPHIC)

SE 1/4 FORT ATKINSON 15' QUADRANGLE

2,330,000 FEET



Mapped, edited, and published by the Geological Survey

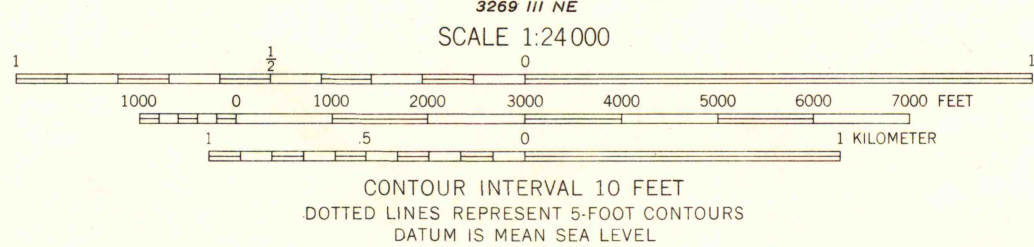
Control by USGS and USC&GS

Topography by photogrammetric methods from aerial photographs taken 1955. Field checked 1960

Polyconic projection. 1927 North American datum  
10,000-foot grid based on Wisconsin coordinate system, south zone  
1000-meter Universal Transverse Mercator grid ticks, zone 16, shown in blue

Red tint indicates area in which only landmark buildings are shown  
Fine red dashed lines indicate selected fence and field lines where generally visible on aerial photographs. This information is unchecked  
Revisions shown in purple compiled from aerial photographs taken 1971. This information not field checked  
Purple tint indicates extension of urban areas

UTM GRID AND 1973 MAGNETIC NORTH DECLINATION AT CENTER OF SHEET



ROAD CLASSIFICATION  
Heavy-duty ——— Light-duty ———  
Medium-duty ——— Unimproved dirt ———  
U. S. Route ——— State Route ———



THIS MAP COMPLIES WITH NATIONAL MAP ACCURACY STANDARDS  
FOR SALE BY U. S. GEOLOGICAL SURVEY, WASHINGTON, D. C. 20242  
AND BY THE WISCONSIN GEOLOGICAL AND NATURAL HISTORY SURVEY, MADISON, WISCONSIN 53706  
A FOLDER DESCRIBING TOPOGRAPHIC MAPS AND SYMBOLS IS AVAILABLE ON REQUEST

1971  
Copy  
1-1

LIMA CENTER, WIS.

SE 1/4 FORT ATKINSON 15' QUADRANGLE  
N4245—W845/7.5

1960  
PHOTOREVISED 1971  
AMS 3269 IV SE—SERIES V861

MAP AND AIR PHOTO  
LIBRARY

AUG 17 1972

University of Wisconsin