

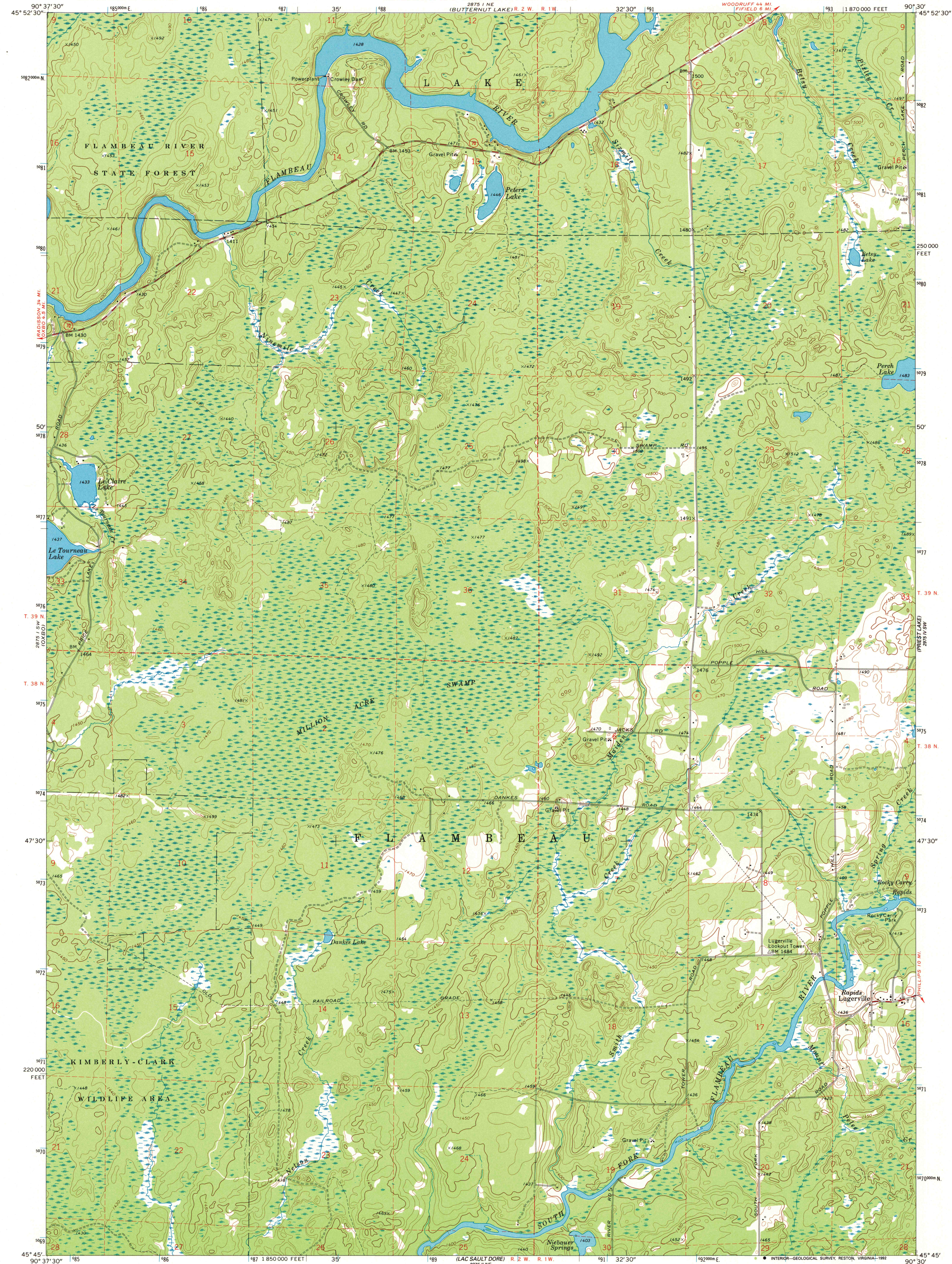
2875 1 NW
(KENNEDY)

UNITED STATES
DEPARTMENT OF THE INTERIOR
GEOLOGICAL SURVEY

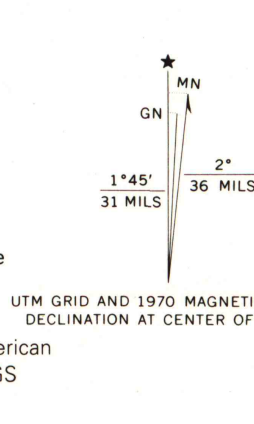
STATE OF WISCONSIN
STATE HIGHWAY COMMISSION
GEOLOGICAL AND NATURAL HISTORY SURVEY

LUGERVILLE QUADRANGLE
WISCONSIN-PRICE CO.
7.5 MINUTE SERIES (TOPOGRAPHIC)

2875 1 NW
(MARK FALLS)



Maped, edited, and published by the Geological Survey
in cooperation with the Wisconsin Highway Commission
and Wisconsin Geological and Natural History Survey
Control by USGS and USC&GS
Topography by photogrammetric methods from aerial
photographs taken 1969. Field checked 1970
Polyconic projection. 1927 North American datum
10,000-foot grid based on Wisconsin coordinate system, north zone
1000-meter Universal Transverse Mercator grid ticks,
zone 15, shown in blue
The difference between 1927 North American Datum and North American
Datum of 1983 (NAD 83) for 7.5-minute intersections is given in USGS
Bulletin 1875. The NAD 83 is shown by dashed corner ticks



THIS MAP COMPLIES WITH NATIONAL MAP ACCURACY STANDARDS
FOR SALE BY U.S. GEOLOGICAL SURVEY, DENVER, COLORADO 80225, OR RESTON, VIRGINIA 22092
AND WISCONSIN GEOLOGICAL AND NATURAL HISTORY SURVEY, MADISON, WISCONSIN 53706
A FOLDER DESCRIBING TOPOGRAPHIC MAPS AND SYMBOLS IS AVAILABLE ON REQUEST

ROAD CLASSIFICATION
Secondary highway, all weather. Light-duty road, all weather,
improved surface
Unimproved road, fair or dry
weather
State Route
LUGERVILLE, WIS.
SE 1/4 KENNEDY 15' QUADRANGLE
45090-G5-TF-024
1970
PHOTOINSPECTED 1981
DMA 2875 1 SE-SERIES V861

1981
copy
1-1
X U.S. Regional
Depository Copy
DO NOT DISCARD
A.H. ROBINSON
MAP LIBRARY
JUN 21 1992
University of Wisconsin
Madison