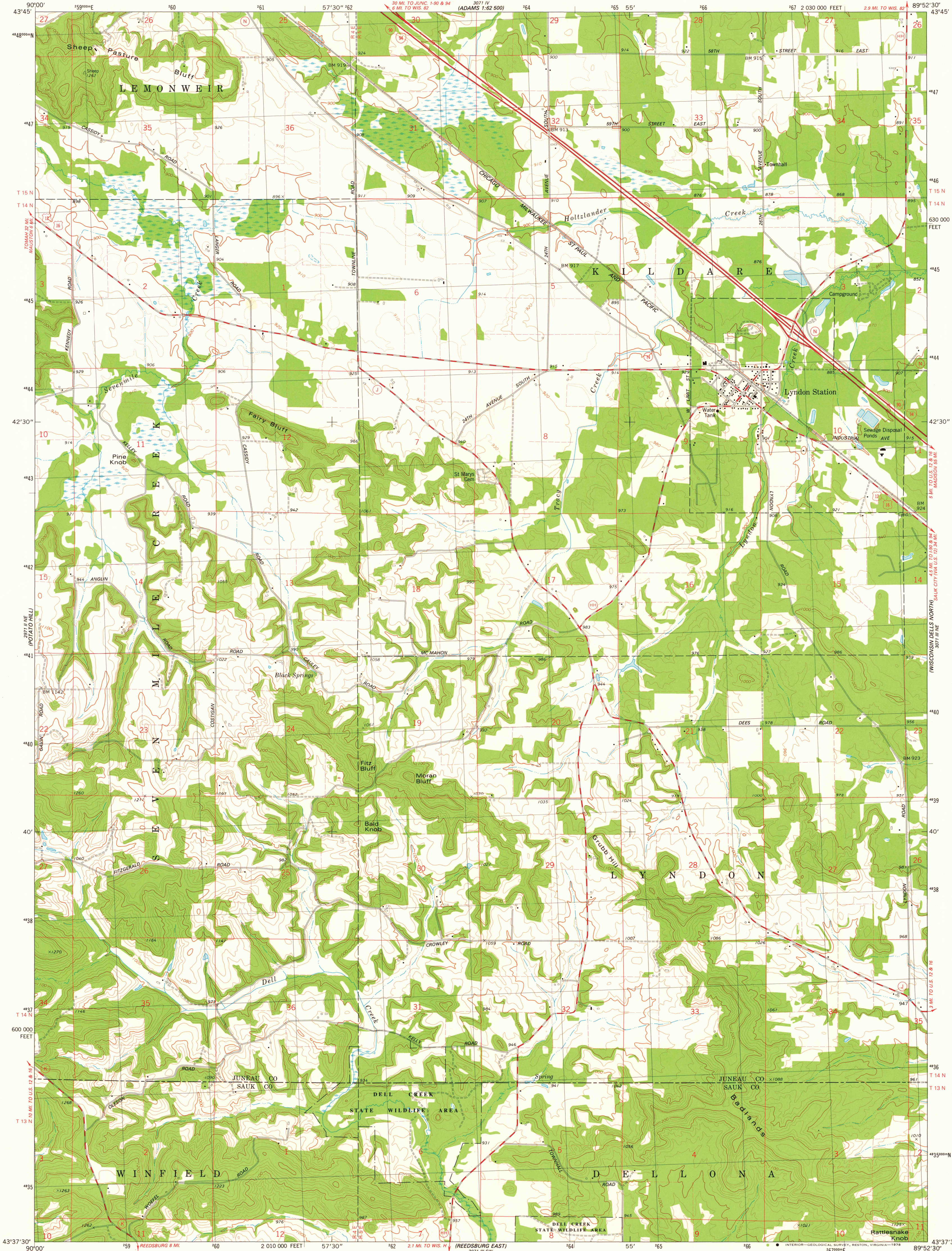


UNITED STATES  
DEPARTMENT OF THE INTERIOR  
GEOLOGICAL SURVEY

STATE OF WISCONSIN  
DIVISION OF HIGHWAYS  
GEOLOGICAL AND NATURAL HISTORY SURVEY

LYNDON STATION QUADRANGLE  
WISCONSIN  
7.5 MINUTE SERIES (TOPOGRAPHIC)  
NW 1/4 WISCONSIN DELLS 15' QUADRANGLE



Maped, edited, and published by the Geological Survey in cooperation with the Wisconsin Division of Highways and Wisconsin Geological and Natural History Survey. Control by USGS and NOS/NOAA. Topography by photogrammetric methods from aerial photographs taken 1975. Field checked 1975. Projection and 10,000-foot grid ticks: Wisconsin coordinate system, south zone (Lambert conformal conic). 1000-meter Universal Transverse Mercator grid, zone 16 1927 North American datum. Fine red dashed lines indicate selected fence and field lines where generally visible on aerial photographs. This information is unchecked.

SCALE 1:24 000  
1 000 2000 3000 4000 5000 6000 7000 FEET  
1 KILOMETER  
CONTOUR INTERVAL 20 FEET  
DOTTED LINES REPRESENT 10-FOOT CONTOURS  
NATIONAL GEODETIC VERTICAL DATUM OF 1929  
THIS MAP COMPLIES WITH NATIONAL MAP ACCURACY STANDARDS FOR SALE BY U.S. GEOLOGICAL SURVEY, RESTON, VIRGINIA 22092 AND WISCONSIN GEOLOGICAL AND NATURAL HISTORY SURVEY, MADISON, WISCONSIN 53706. A FOLDER DESCRIBING TOPOGRAPHIC MAPS AND SYMBOLS IS AVAILABLE ON REQUEST.



ROAD CLASSIFICATION  
Primary highway, hard surface  
Secondary highway, hard surface  
Light-duty road, hard or improved surface  
Unimproved road  
Interstate Route  
U. S. Route  
State Route

LYNDON STATION, WIS.  
NW 1/4 WISCONSIN DELLS 15' QUADRANGLE  
N4337.5 - W8952.5/7.5  
1975  
AMS 3071 III NW-SERIES V861

MAP AND AIR PHOTO LIBRARY  
SEP 13 1978  
University of Wisconsin  
Madison

1975  
copy  
1-1