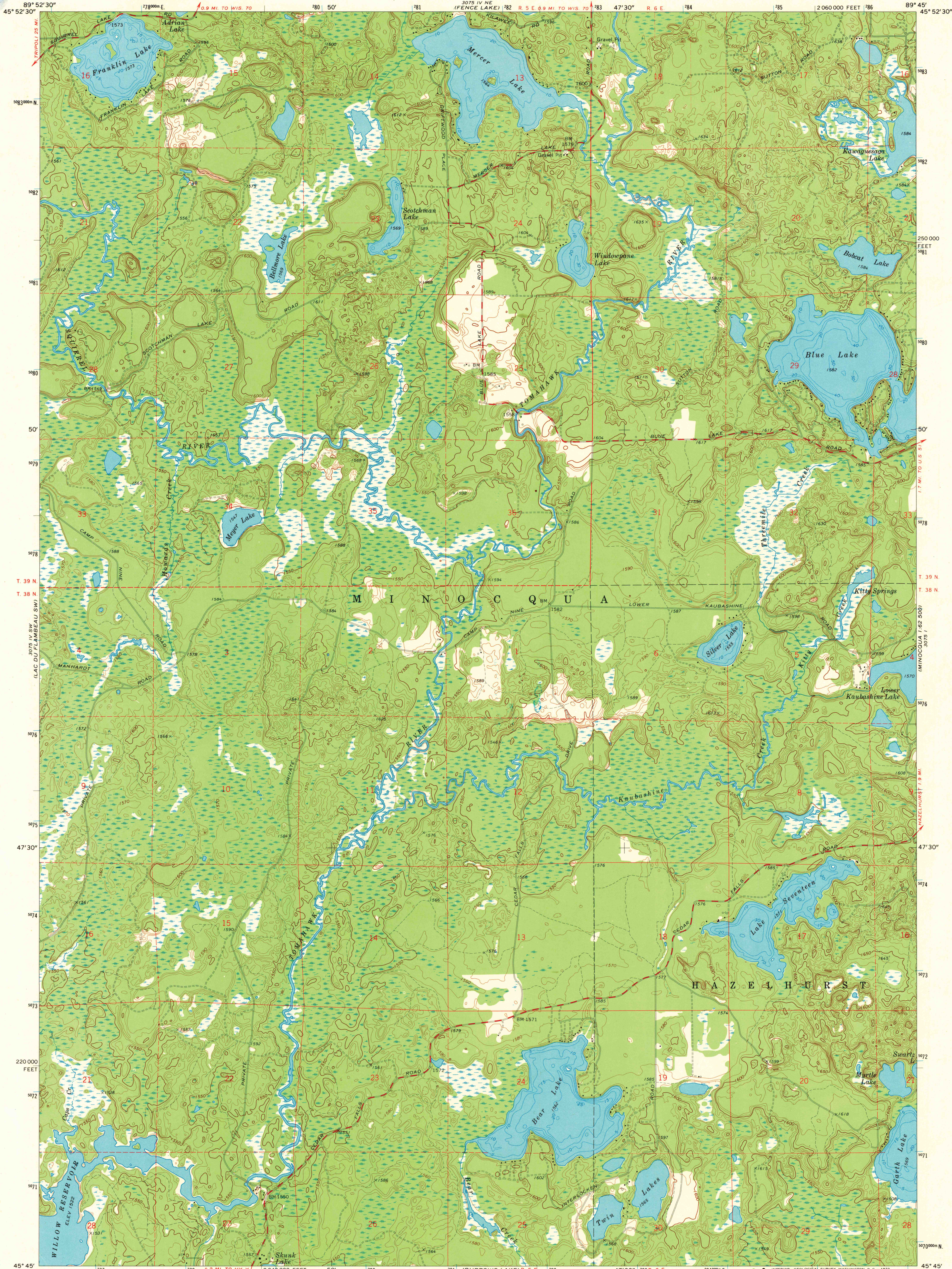


UNITED STATES
DEPARTMENT OF THE INTERIOR
GEOLOGICAL SURVEY

STATE OF WISCONSIN
STATE HIGHWAY COMMISSION
GEOLOGICAL AND NATURAL HISTORY SURVEY

MERCER LAKE QUADRANGLE
WISCONSIN—ONEIDA CO.
7.5 MINUTE SERIES (TOPOGRAPHIC)



Mapped, edited, and published by the Geological Survey in cooperation with the Wisconsin Highway Commission and Wisconsin Geological and Natural History Survey. Control by USGS and USC&GS.

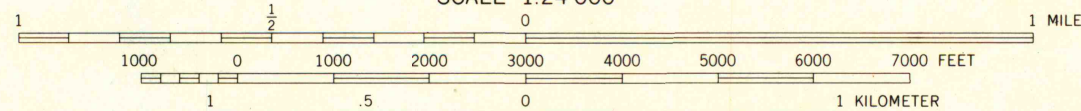
Topography by photogrammetric methods from aerial photographs taken 1969. Field checked 1971.

Depth curves compiled from charts furnished by Wisconsin Department of Natural Resources.

Polyconic projection. 1927 North American datum.

10,000-foot grid based on Wisconsin coordinate system, north zone 1000-meter Universal Transverse Mercator grid ticks, zone 16, shown in blue.

Fine red dashed lines indicate selected fence and field lines where generally visible on aerial photographs. This information is un-checked.



CONTOUR INTERVAL 10 FEET
DATUM IS MEAN SEA LEVEL



ROAD CLASSIFICATION
Primary highway, hard surface ————
Secondary highway, hard surface ————
Unimproved road ————
Interstate Route ————
U.S. Route ————
State Route ————

MERCER LAKE, WIS.
SE 1/4 LAC DU FLAMBEAU 15' QUADRANGLE
N 4545—W 8945/7.5

1971
AMS 3075 IV SE—SERIES V 861

MAP AND AIR PHOTO
LIBRARY

OCT 5 1973

University of Wisconsin