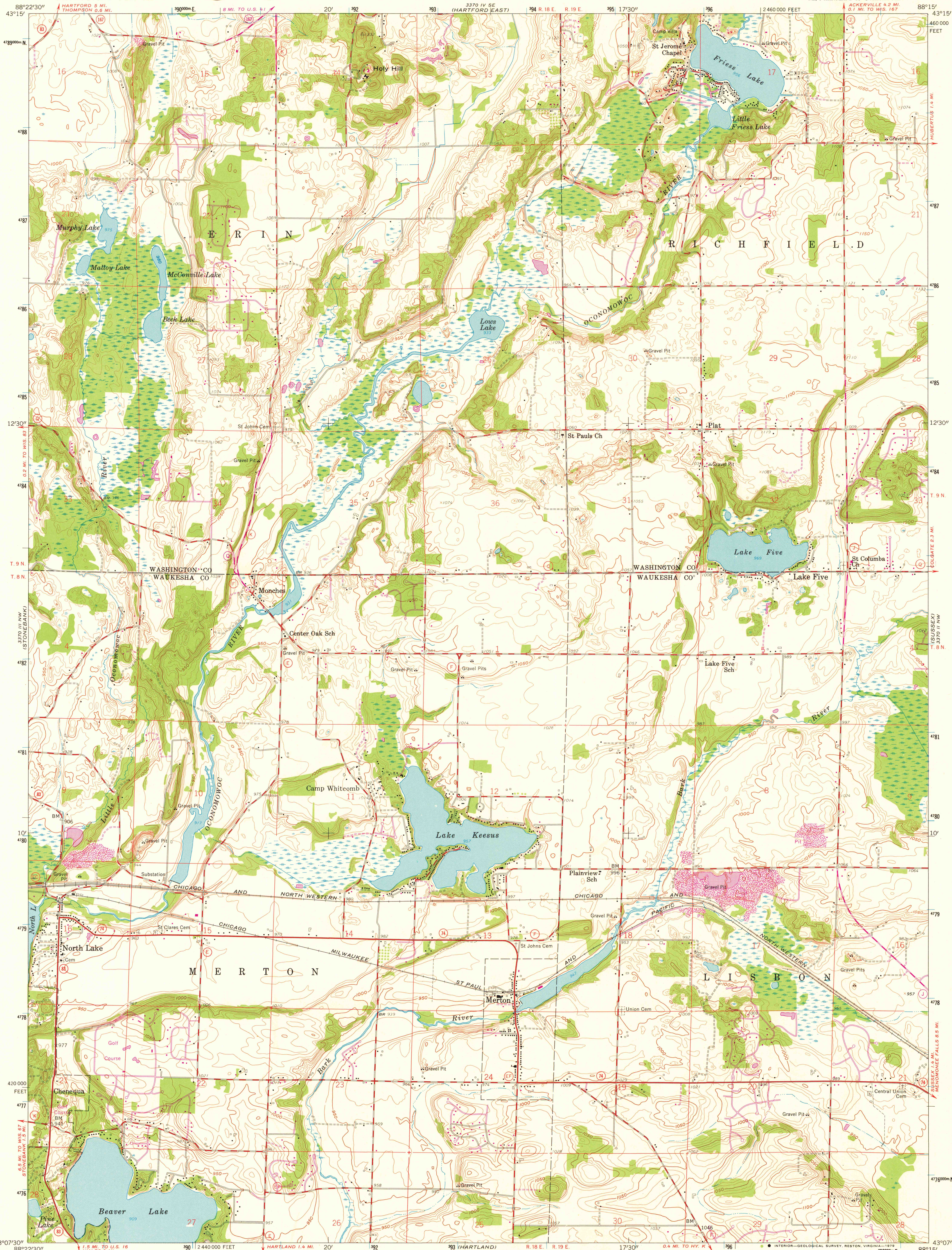


UNITED STATES
DEPARTMENT OF THE INTERIOR
GEOLOGICAL SURVEY



MERTON QUADRANGLE
WISCONSIN
7.5 MINUTE SERIES (TOPOGRAPHIC)
NE 1/4 HARTLAND 15' QUADRANGLE

370 1 SW
(JACKSON)



Mapped, edited, and published by the Geological Survey

Control by USGS and USC&GS

Topography from aerial photographs by photogrammetric methods

Aerial photographs taken 1954-1955. Field check 1959

Polycyclic projection. 1927 North American datum

10,000-foot grid based on Wisconsin coordinate system, south zone

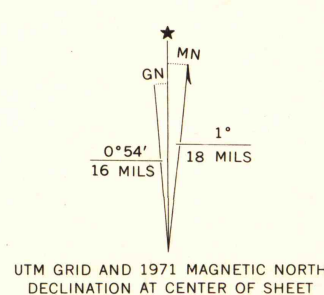
1000-meter Universal Transverse Mercator grid ticks, zone 16, shown in blue

Revisions shown in purple compiled from aerial photographs

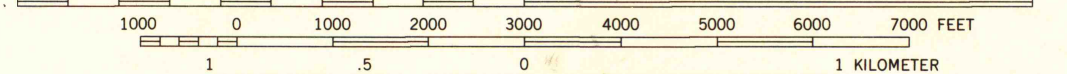
taken 1971. This information not field checked

Map photoinspected 1976

No major culture or drainage changes observed



SCALE 1:24 000



CONTOUR INTERVAL 10 FEET

NATIONAL GEODETIC VERTICAL DATUM OF 1929

THIS MAP COMPLIES WITH NATIONAL MAP ACCURACY STANDARDS
FOR SALE BY U. S. GEOLOGICAL SURVEY, RESTON, VIRGINIA 22092
AND WISCONSIN GEOLOGICAL AND NATURAL HISTORY SURVEY, MADISON, WISCONSIN 53706
A FOLDER DESCRIBING TOPOGRAPHIC MAPS AND SYMBOLS IS AVAILABLE ON REQUEST



ROAD CLASSIFICATION
Heavy-duty ——— Light-duty ———
Medium-duty ——— Unimproved dirt ———
○ State Route

MERTON, WIS.

NE 1/4 HARTLAND 15' QUADRANGLE

N4307.5-W8815.7/5

1959

PHOTOINSPECTED 1971

PHOTOINSPECTED 1976

AMS 3370 III NE-SERIES V861

MAP AND AIR PHOTO
LIBRARY

AUG 21 1979

University of Wisconsin
Madison

1976
Copy
1-1