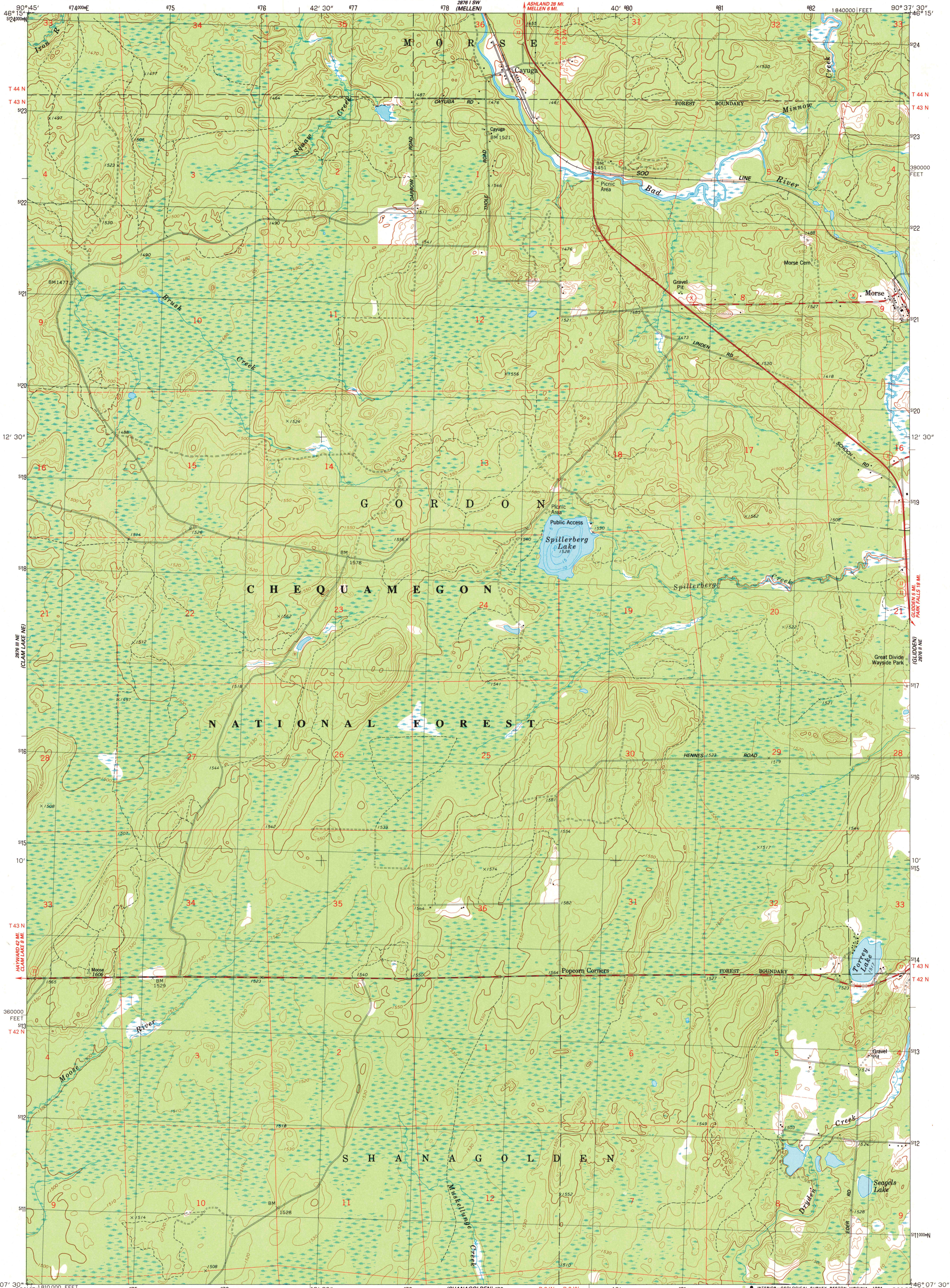


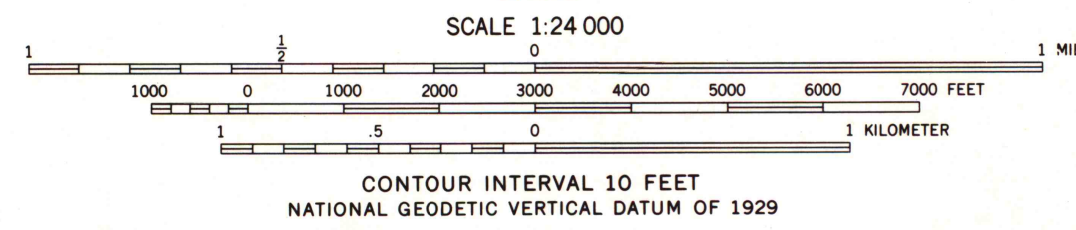
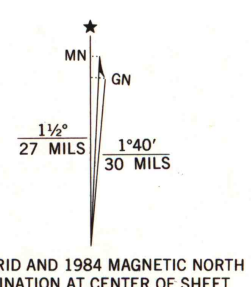
UNITED STATES
DEPARTMENT OF THE INTERIOR
GEOLOGICAL SURVEY

STATE OF WISCONSIN
DIVISION OF HIGHWAYS
GEOLOGICAL AND NATURAL HISTORY SURVEY

MORSE QUADRANGLE
WISCONSIN-ASHLAND CO.
7.5 MINUTE SERIES (TOPOGRAPHIC)



Maped, edited, and published by the Geological Survey in cooperation with the Wisconsin Division of Highways and Wisconsin Geological and Natural History Survey. Control by USGS and NOS/NOAA. Topography by photogrammetric methods from aerial photographs taken 1965. Revised from aerial photographs taken 1983. Field checked 1984. Map edited 1984. Hydrography compiled from information furnished by Wisconsin Department of Natural Resources. Projection and 10,000-foot grid ticks: Wisconsin coordinate system, north zone (Lambert conformal conic). 1000-meter Universal Transverse Mercator grid, zone 15 1927 North American Datum. To place on the predicted North American Datum 1983, move the projection lines 6 meters north and 11 meters east as shown by dashed corner ticks. There may be private inholdings within the boundaries of the National or State reservations shown on this map. Fine red dashed lines indicate selected fence and field lines where generally visible on aerial photographs. This information is uncheckered.



ROAD CLASSIFICATION
Primary highway, hard surface. Light-duty road, hard or improved surface.
Secondary highway, hard surface. Unimproved road.
Interstate Route. U.S. Route. State Route.

MORSE, WIS.
NW 1/4 GLIDDEN 15' QUADRANGLE
46090-86-TF-024
1984
DMA 2876 II NW-SERIES V861

U.S. Regional
Repository Copy
DO NOT DISCARD
A.H. ROBINSON
MAP LIBRARY
MAY 21 1985
University of Wisconsin
Madison