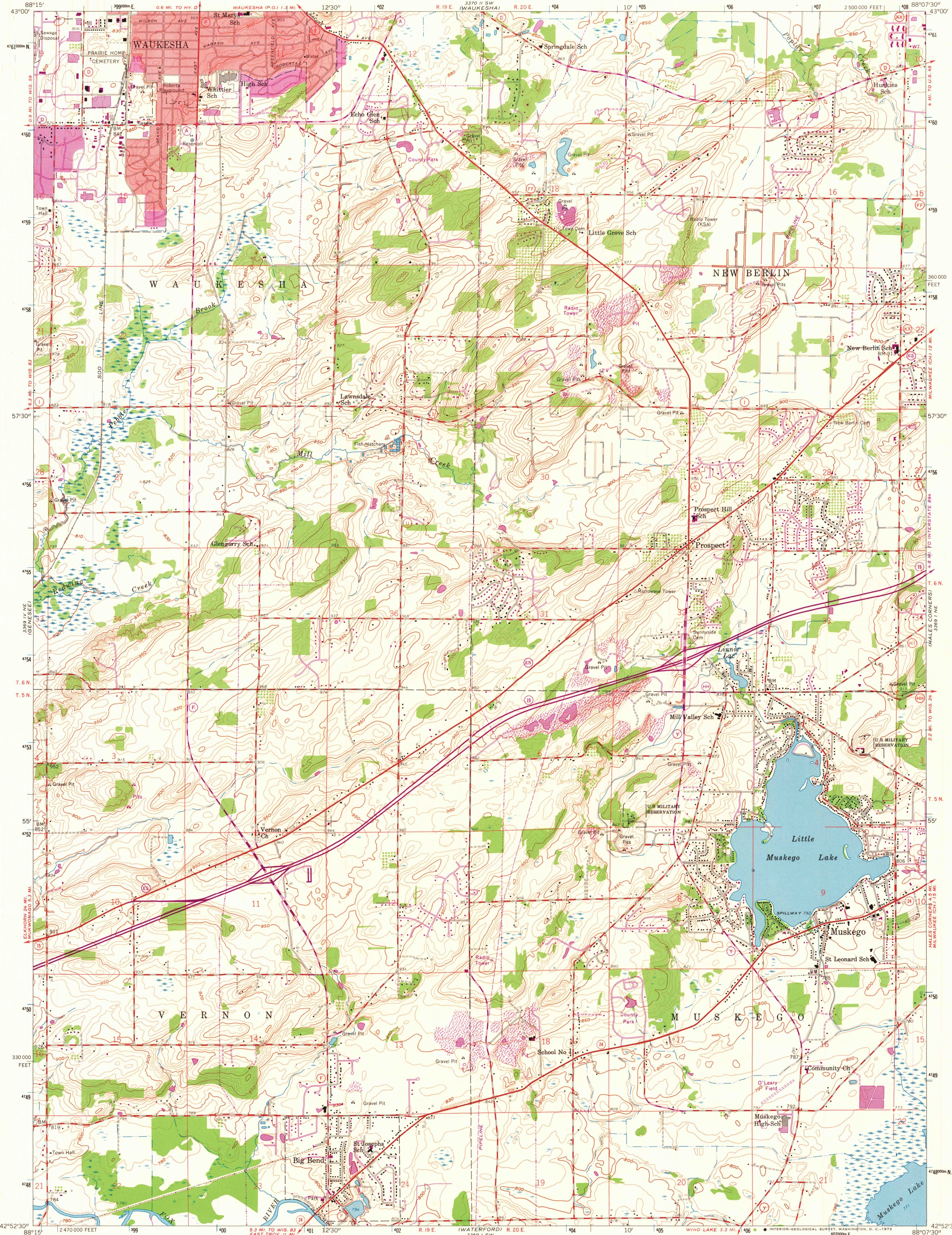


UNITED STATES  
DEPARTMENT OF THE INTERIOR  
GEOLOGICAL SURVEY

MUSKEGO QUADRANGLE  
WISCONSIN—WAUKESHA CO.  
7.5 MINUTE SERIES (TOPOGRAPHIC)  
NW 1/4 HALES CORNERS 15' QUADRANGLE



Mapped, edited, and published by the Geological Survey  
Control by USGS and USC&GS

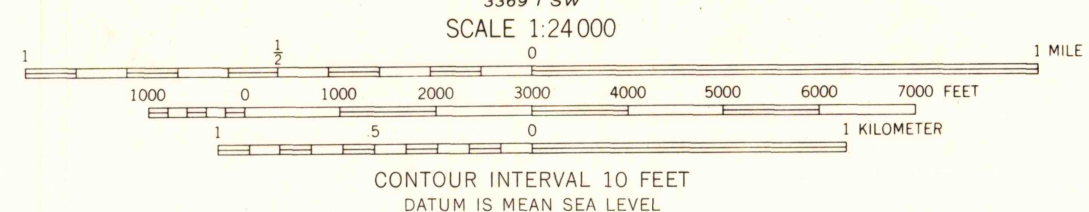
Topography from aerial photographs by photogrammetric methods  
Aerial photographs taken 1955. Field check 1959

Polycyclic projection. 1927 North American datum  
10,000-foot grid based on Wisconsin coordinate system, south zone  
1000-meter Universal Transverse Mercator grid ticks,  
zone 16, shown in blue

Red tint indicates areas in which only  
landmark buildings are shown

Revisions shown in purple compiled from aerial photographs  
taken 1971. This information not field checked

Purple tint indicates extension of urban areas



ROAD CLASSIFICATION  
Heavy-duty ——— Light-duty ———  
Medium-duty ——— Unimproved dirt ———  
State Route ———



THIS MAP COMPLIES WITH NATIONAL MAP ACCURACY STANDARDS  
FOR SALE BY U. S. GEOLOGICAL SURVEY, WASHINGTON, D. C. 20242  
AND BY THE WISCONSIN GEOLOGICAL AND NATURAL HISTORY SURVEY, MADISON, WISCONSIN 53706  
A FOLDER DESCRIBING TOPOGRAPHIC MAPS AND SYMBOLS IS AVAILABLE ON REQUEST

MUSKEGO, WIS.  
NW 1/4 HALES CORNERS 15' QUADRANGLE  
N 4252.5—W 8807.5/7.5  
1959  
AMS 3369 1 NW—SERIES V861

JAN 29 1973  
2545