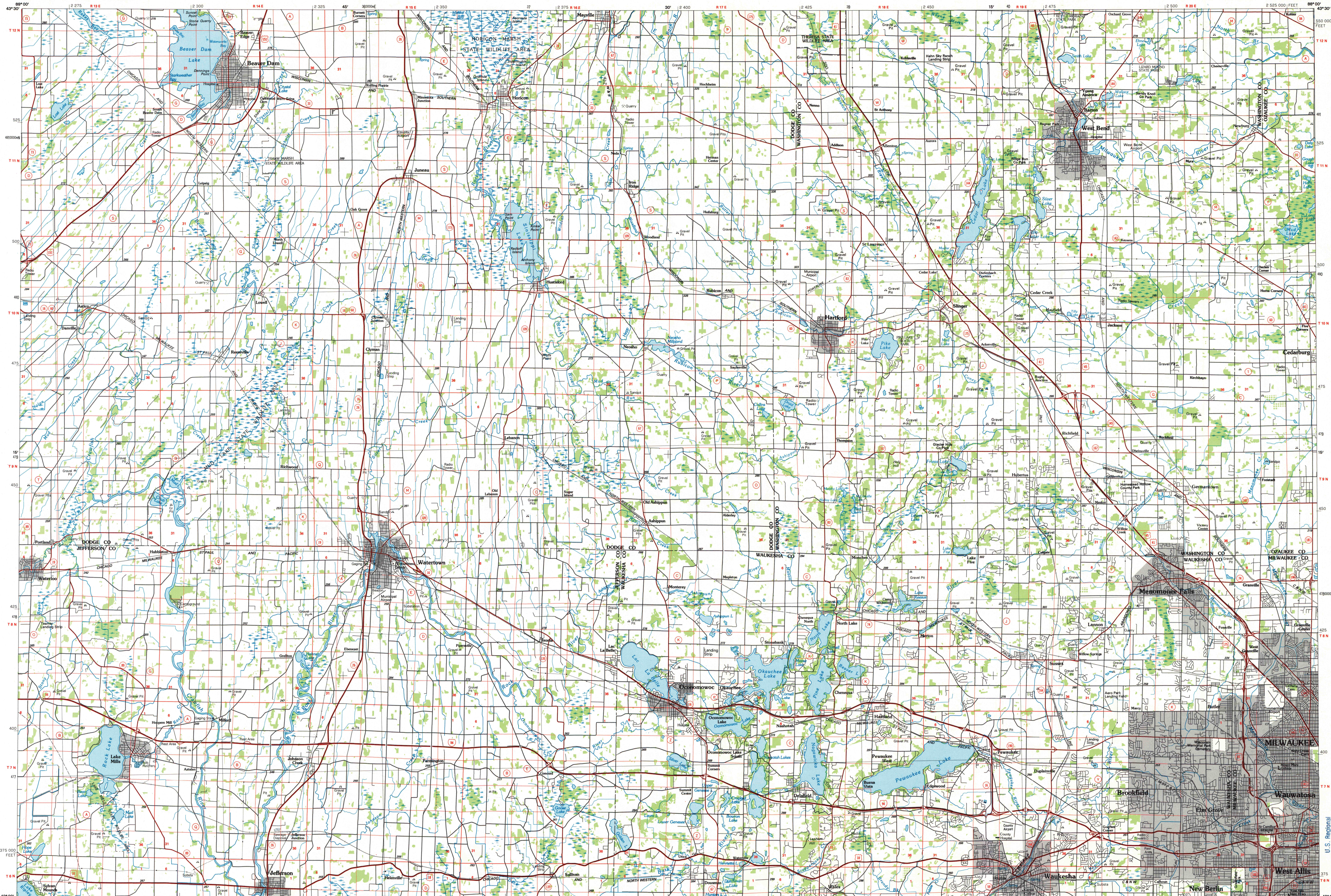


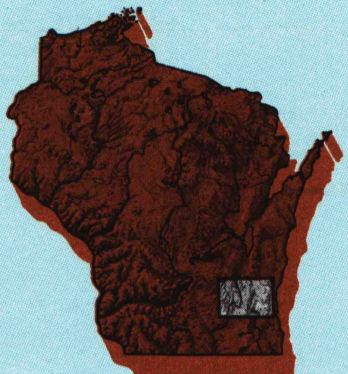
OCONOMOWOC, WISCONSIN

30 X 60 MINUTE SERIES (PLANIMETRIC)



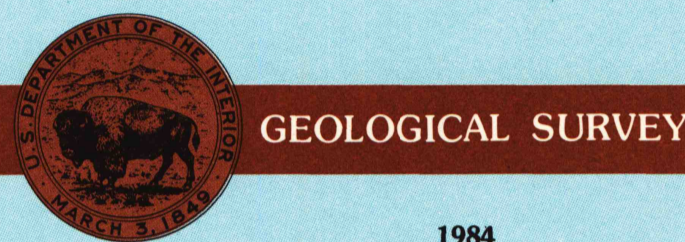
Oconomowoc
WISCONSIN

1:100 000-scale
planimetric map



30 X 60 MINUTE QUADRANGLE
SHOWING

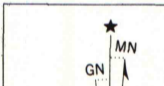
- Elevations in meters
- Highways, roads and other manmade structures
- Water features
- Woodland areas
- Geographic names



Produced by the United States Geological Survey
Compiled from USGS 1:24 000-scale topographic maps dated 1958-1960. Planimetry revised from aerial photographs taken 1982 and other source data. Revised information not field checked. Map edited 1984
Projection and 10 000-meter grid, zone 16, Universal Transverse Mercator
25 000-foot grid ticks based on Wisconsin coordinate system, south zone
1927 North American Datum
To place on the predicted North American Datum 1983, move the projection lines 4 meters north and 8 meters east
There may be private inholdings within the boundaries of the National or State reservations shown on this map

NATIONAL GEODETIC VERTICAL DATUM OF 1929
ELEVATIONS SHOWN TO THE NEAREST METER

THIS MAP COMPLIES WITH NATIONAL MAP ACCURACY STANDARDS

CONVERSION TABLE		DECLINATION DIAGRAM	ADJOINING MAPS		
Meters	Feet		1	2	3
1	3.2808		1	2	3
2	6.5617		4	5	6
3	9.8425		7	8	9
4	13.1234		10	11	12
5	16.4042		13	14	15
6	19.6850		16	17	18
7	22.9659		19	20	21
8	26.2467		22	23	24
9	29.5276		25	26	27
10	32.8084		28	29	30
To convert meters to feet multiply by 3.2808		UTM grid convergency (GN) and 1984 magnetic declination (MN) at center of map Diagram is approximate	1 Wisconsin Dells 2 Fond du Lac 3 Oshkosh 4 Madison 5 Milwaukee 6 Monroe 7 Lake Geneva 8 Racine		
To convert feet to meters multiply by 0.3048					

FOR SALE BY U.S. GEOLOGICAL SURVEY
RESTON, VIRGINIA 22092

Topographic Map Symbols

Primary highway, hard surface	
Secondary highway, hard surface	
Light duty road, principal street, hard or improved surface	
Other road or street, trail	
Road marker, interstate, U.S. State	
Railroad, standard gauge, narrow gauge	
Bridge, overpass, underpass	
Tunnel, road, railroad	
Built up area, locality, elevation	
Airport, landing field, landing strip	
National boundary	
State boundary	
County boundary	
National or State reservation boundary	
Land grant boundary	
U.S. public lands survey: range, township, section	
Range, township, section line: protracted	
Power transmission line: pipeline	
Dam, dam with lock	
Cemetery, building	
Windmill, water well, spring	
Mine shaft, salt or cave, mine, quarry, gravel pit	
Campground, picnic area, U.S. location monument	
Ruins, cliff dwelling	
Distorted surface: strip mine, lava, sand	
Contours: index, intermediate, supplementary	
Bathymetric contours: index, intermediate	
Stream, lake: perennial, intermittent	
Rapids, large and small; falls, large and small	
Area to be submerged: marsh, swamp	
Land subject to controlled inundation, woodland	
Sand, mangrove	
Orchard, vineyard	

A pamphlet describing topographic maps is available on request

ARTHUR H. ROBINSON MAP LIBRARY
University of Wisconsin-Madison
JUN -6 1985

NON-CIRCULATING