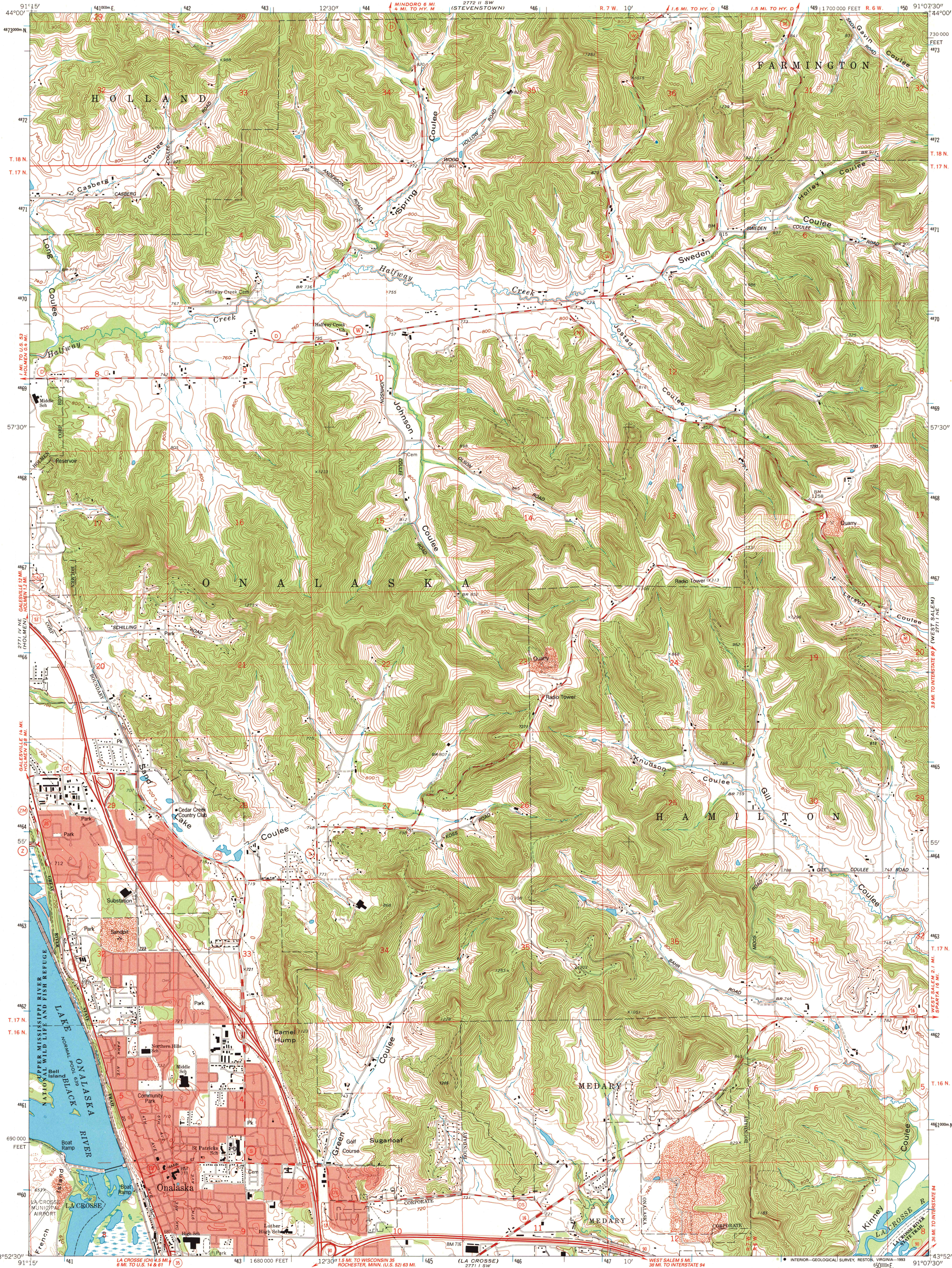
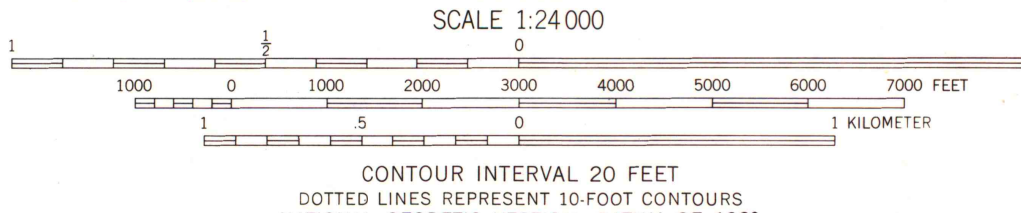


UNITED STATES
DEPARTMENT OF THE INTERIOR
GEOLOGICAL SURVEY

ONALASKA QUADRANGLE
WISCONSIN-LA CROSSE CO.
7.5 MINUTE SERIES (TOPOGRAPHIC)
NW 1/4 LA CROSSE 15' QUADRANGLE



Produced by the United States Geological Survey
in cooperation with the Wisconsin Division of Highways
and Wisconsin Geological and Natural History Survey
Control by USGS and NOS/NOAA
Topography by photogrammetric methods from aerial photographs
taken 1962. Field checked 1963. Revised from aerial photographs
taken 1991. Field checked 1992. Map edited 1993
Projection and 10,000-foot grid ticks: Wisconsin coordinate
system, south zone (Lambert conformal conic)
1000-meter Universal Transverse Mercator grid ticks, zone 15, shown in blue
1927 North American Datum (NAD 27)
North American Datum of 1983 (NAD 83) is shown by dashed corner ticks
The values of the shift between NAD 27 and NAD 83 for 7.5-minute
intersections are given in USGS Bulletin 1875
There may be private inholdings within the boundaries of the
National or State reservations shown on this map
Red tint indicates areas in which only landmark buildings are shown
Fine red dashed lines indicate selected fence and field lines where
generally visible on aerial photographs. This information is unchecked



ROAD CLASSIFICATION

Primary highway, hard surface	Light-duty road, hard or improved surface
Secondary highway, hard surface	Unimproved road

○ Interstate Route □ U. S. Route ○ State Route

**A.H. ROBINSON
MAP LIBRARY**
OCT 06 1993
University of Wisconsin
Madison

ONALASKA, WIS.
NW 1/4 LA CROSSE 15' QUADRANGLE
43091-H2-TF-024
1993
DMA 2771 1 NW - SERIES V861

**U.S. Regional
Depository Copy
DO NOT DISCARD**

1993
COPY
1-1