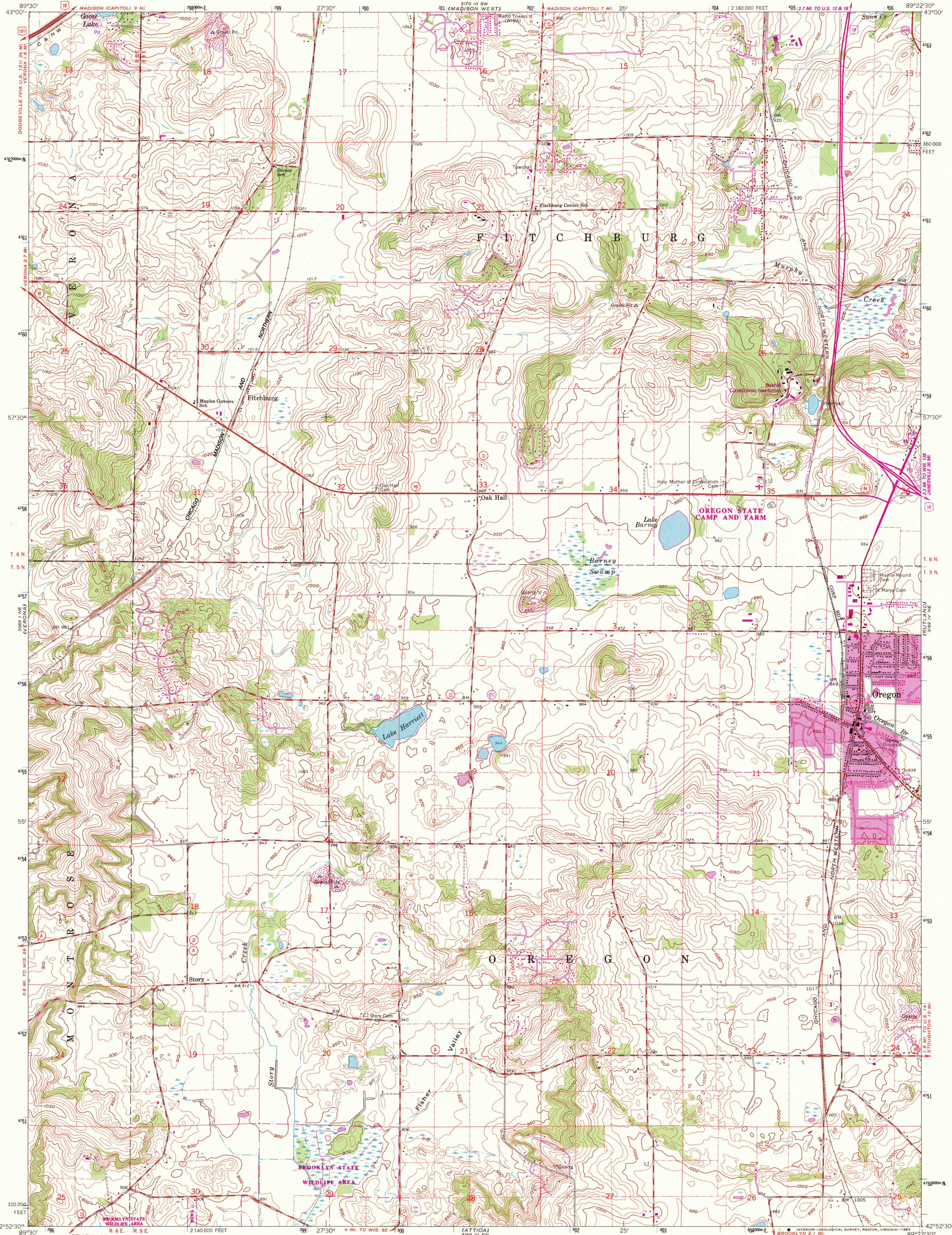


UNITED STATES  
DEPARTMENT OF THE INTERIOR  
GEOLOGICAL SURVEY

OREGON QUADRANGLE  
WISCONSIN—DANE CO.  
7.5 MINUTE SERIES (TOPOGRAPHIC)  
NW/4 EVANSVILLE 15' QUADRANGLE



Mapped, edited, and published by the Geological Survey  
in cooperation with State of Wisconsin agencies

Control by USGS and USCGS

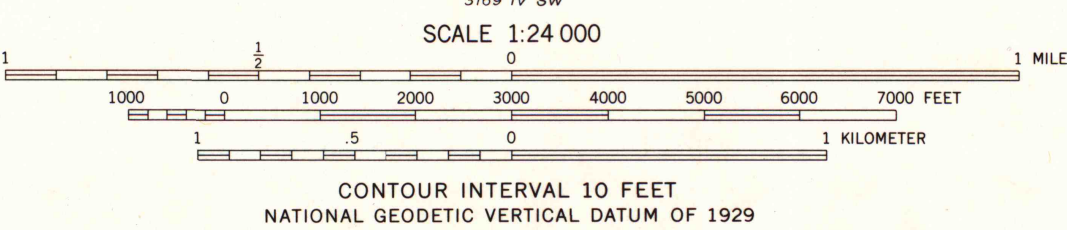
Topography by photogrammetric methods from aerial  
photographs taken 1960. Field checked 1961

Polycyclic projection. 1927 North American datum  
10,000-foot grid based on Wisconsin coordinate system, south zone  
1000-meter Universal Transverse Mercator grid ticks,  
zone 16, shown in blue

To place on the predicted North American Datum 1983  
move the projection lines 4 meters north and  
9 meters east as shown by dashed corner ticks

There may be private inholdings within the boundaries of  
the National or State reservations shown on this map

UTM GRID AND 1982 MAGNETIC NORTH  
DECLINATION AT CENTER OF SHEET



THIS MAP COMPLIES WITH NATIONAL MAP ACCURACY STANDARDS  
FOR SALE BY U.S. GEOLOGICAL SURVEY, RESTON, VIRGINIA 22092  
AND WISCONSIN GEOLOGICAL AND NATURAL HISTORY SURVEY, MADISON, WISCONSIN 53706  
A FOLDER DESCRIBING TOPOGRAPHIC MAPS AND SYMBOLS IS AVAILABLE ON REQUEST



QUADRANGLE LOCATION

ROAD CLASSIFICATION  
Heavy-duty ——— Light duty ———  
Medium-duty ——— Unimproved dirt ———  
U.S. Route ——— State Route ———

OREGON, WIS.  
NW/4 EVANSVILLE 15' QUADRANGLE  
N4252.5—W8922.5/7.5

1961  
PHOTOREVISED 1982

DMA 3169 IV NW—SERIES V861

A.H. ROBINSON  
MAD LIBRARY  
OCT - 6 1983  
University of Wisconsin  
Madison

1982  
Copy  
1-1