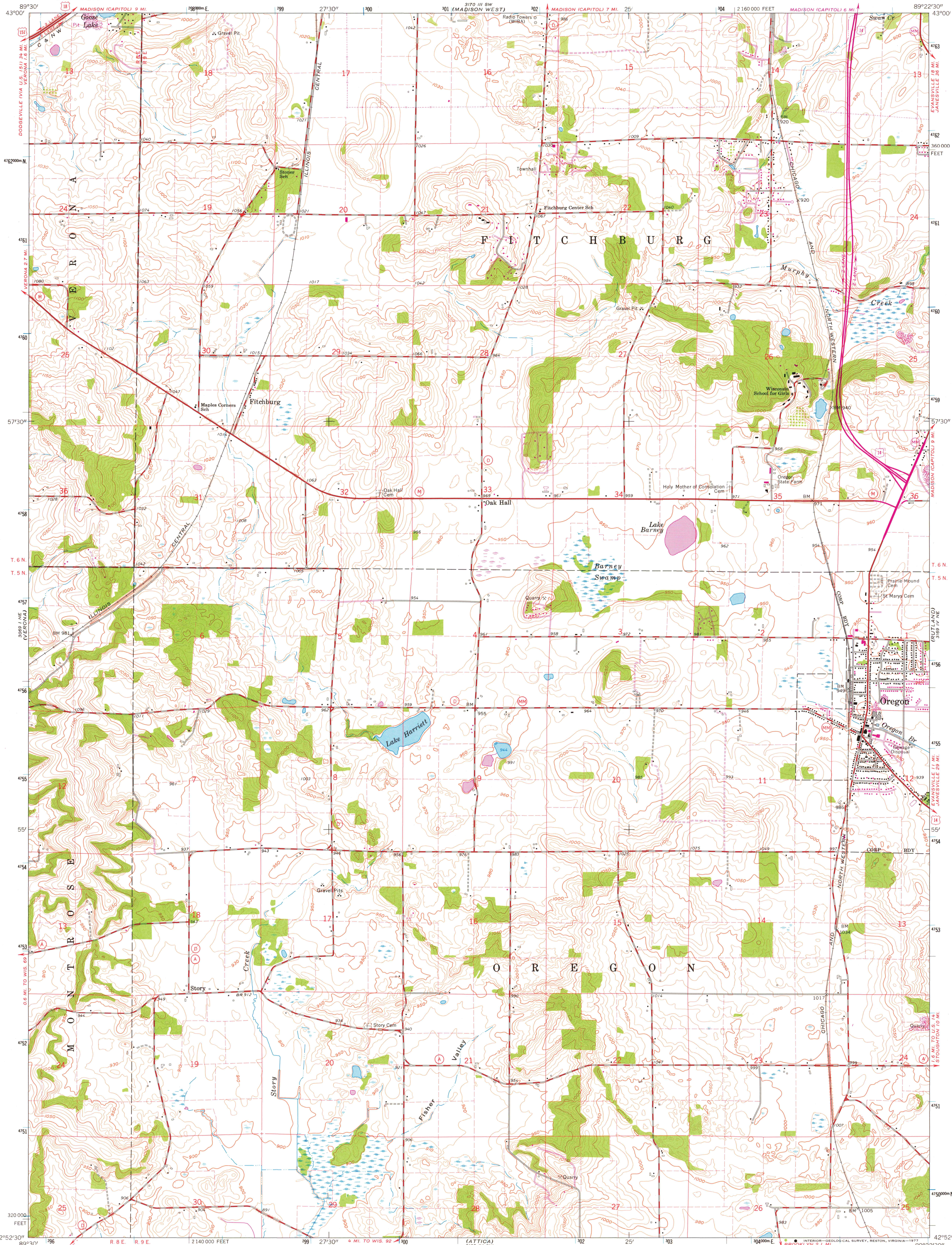
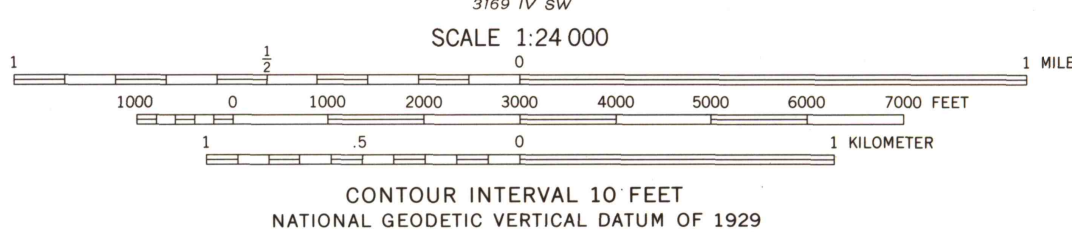


UNITED STATES  
DEPARTMENT OF THE INTERIOR  
GEOLOGICAL SURVEY

OREGON QUADRANGLE  
WISCONSIN-DANE CO.  
7.5 MINUTE SERIES (TOPOGRAPHIC)  
NW/4 EVANSVILLE 15' QUADRANGLE



Maped, edited, and published by the Geological Survey  
in cooperation with State of Wisconsin agencies  
Control by USGS and USC&GS  
Topography by photogrammetric methods from aerial  
photographs taken 1960. Field checked 1961  
Polyconic projection. 1927 North American datum  
10,000-foot grid based on Wisconsin coordinate system, south zone  
1000-meter Universal Transverse Mercator grid ticks,  
zone 16, shown in blue  
Fine red dashed lines indicate selected fence and field lines where  
generally visible on aerial photographs. This information is unchecked  
Revisions shown in purple compiled from aerial photographs  
taken 1969. This information not field checked  
Map photoinspected 1974  
No major culture or drainage changes observed



ROAD CLASSIFICATION  
Heavy duty ——— Light duty ———  
Medium duty ——— Unimproved dirt ———  
U.S. Route ——— State Route ———



USGS  
Historical File  
Topographic Division

OREGON, WIS.  
NW/4 EVANSVILLE 15' QUADRANGLE  
N4252.5—W8922.5/7.5  
1961  
PHOTOREVISED 1969  
PHOTOINSPECTED 1974  
AMS 3169 IV NW—SERIES V861

JUN 22 1978  
2400