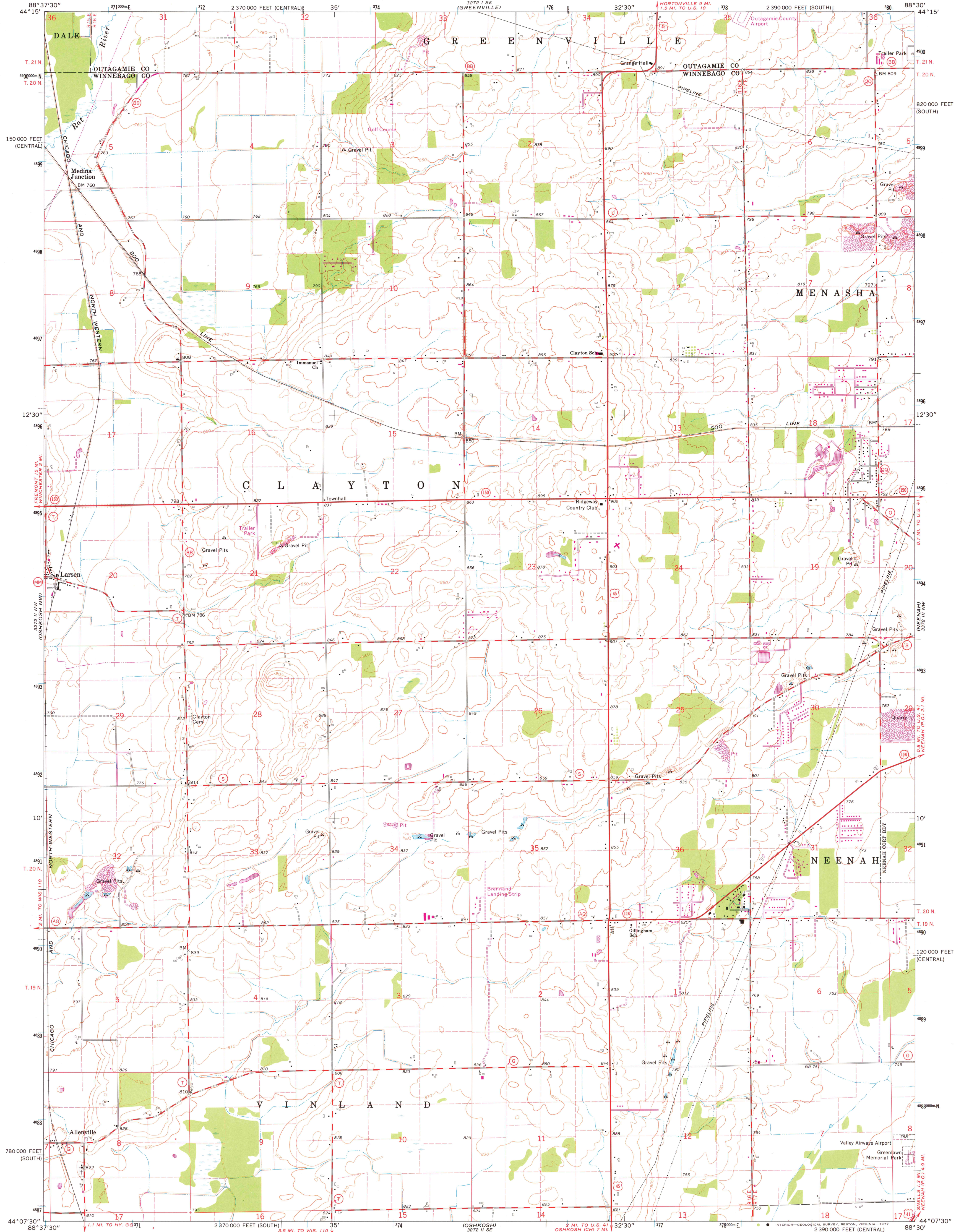


UNITED STATES  
DEPARTMENT OF THE INTERIOR  
GEOLOGICAL SURVEY

OSHKOSH NE QUADRANGLE  
WISCONSIN  
7.5 MINUTE SERIES (TOPOGRAPHIC)  
NE/4 OSHKOSH 15' QUADRANGLE



Mapped, edited, and published by the Geological Survey in cooperation with the Wisconsin Highway Commission and Wisconsin Geological and Natural History Survey. Control by USGS and USC&GS.

Topography by photogrammetric methods from aerial photographs taken 1960. Field checked 1961.

Polyconic projection. 1927 North American datum. 10,000-foot grids based on Wisconsin coordinate system, south and central zones.

1000-metre Universal Transverse Mercator grid ticks, zone 16, shown in blue.

Fine red dashed lines indicate selected fence and field lines where generally visible on aerial photographs. This information is unchecked.

THIS MAP COMPLIES WITH NATIONAL MAP ACCURACY STANDARDS FOR SALE BY U. S. GEOLOGICAL SURVEY, RESTON, VIRGINIA 22092 AND BY THE WISCONSIN GEOLOGICAL AND NATURAL HISTORY SURVEY, MADISON, WISCONSIN 53706. A FOLDER DESCRIBING TOPOGRAPHIC MAPS AND SYMBOLS IS AVAILABLE ON REQUEST.

Revisions shown in purple compiled from aerial photographs taken 1975. This information not field checked.

ROAD CLASSIFICATION

Heavy-duty ——— Light-duty ———  
Medium-duty ——— Unimproved dirt ———

U. S. Route ——— State Route ———

USGS Historical File Topographic Division

OSHKOSH NE, WIS.  
NE/4 OSHKOSH 15' QUADRANGLE  
N4407.5—W8830/7.5

1961  
PHOTOREVISED 1975  
AMS 3272 II NE—SERIES V861

FEB 11 1977  
2750