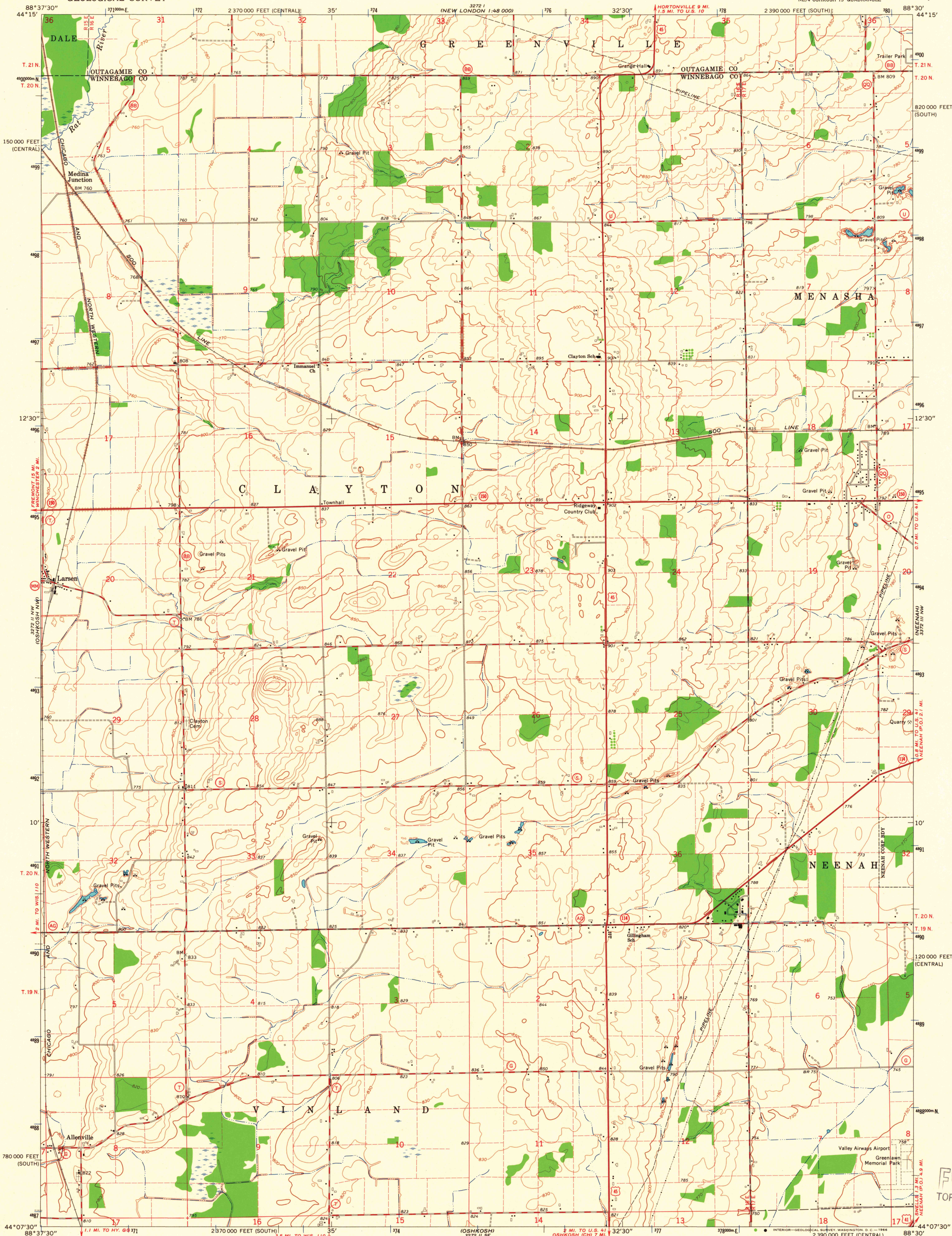


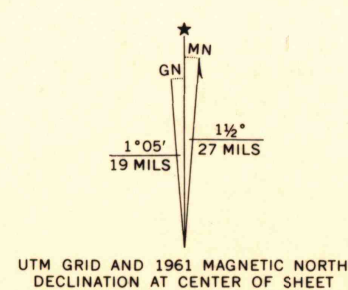
UNITED STATES
DEPARTMENT OF THE INTERIOR
GEOLOGICAL SURVEY

OSHKOSH NE QUADRANGLE
WISCONSIN
7.5 MINUTE SERIES (TOPOGRAPHIC)
NE/4 OSHKOSH 15 QUADRANGLE



Mapped, edited, and published by the Geological Survey
in cooperation with the Wisconsin Highway Commission
and Wisconsin Geological and Natural History Survey
Control by USGS and USC&GS

Topography by photogrammetric methods from aerial
photographs taken 1960. Field checked 1961
Polyconic projection. 1927 North American datum
10,000-foot grids based on Wisconsin coordinate system,
south and central zones
1000-meter Universal Transverse Mercator grid ticks,
zone 15, shown in blue
Fine red dashed lines indicate selected fence and field lines where
generally visible on aerial photographs. This information is unchecked



SCALE 1:24,000
1 000 2000 3000 4000 5000 6000 7000 FEET
1 2 3 4 5 6 7 8 9 10 KILOMETER
CONTOUR INTERVAL 10 FEET
DATUM IS MEAN SEA LEVEL
THIS MAP COMPLIES WITH NATIONAL MAP ACCURACY STANDARDS
FOR SALE BY U. S. GEOLOGICAL SURVEY, WASHINGTON, D. C. 20242
AND BY THE WISCONSIN GEOLOGICAL AND NATURAL HISTORY SURVEY, MADISON, WISCONSIN
A FOLDER DESCRIBING TOPOGRAPHIC MAPS AND SYMBOLS IS AVAILABLE ON REQUEST



ROAD CLASSIFICATION
Heavy-duty ——— Light-duty ———
Medium-duty - - - - - Unimproved dirt - - - - -
U.S. Route ——— State Route ———

OSHKOSH NE, WIS.
NE/4 OSHKOSH 15 QUADRANGLE
N4407.5—W8830.7.5

U.S.G.S.
FINE COPY
TOPOGRAPHIC DIVISION

2555
OCT 3 1965

1961
AMS 3272 II NE—SERIES V861