

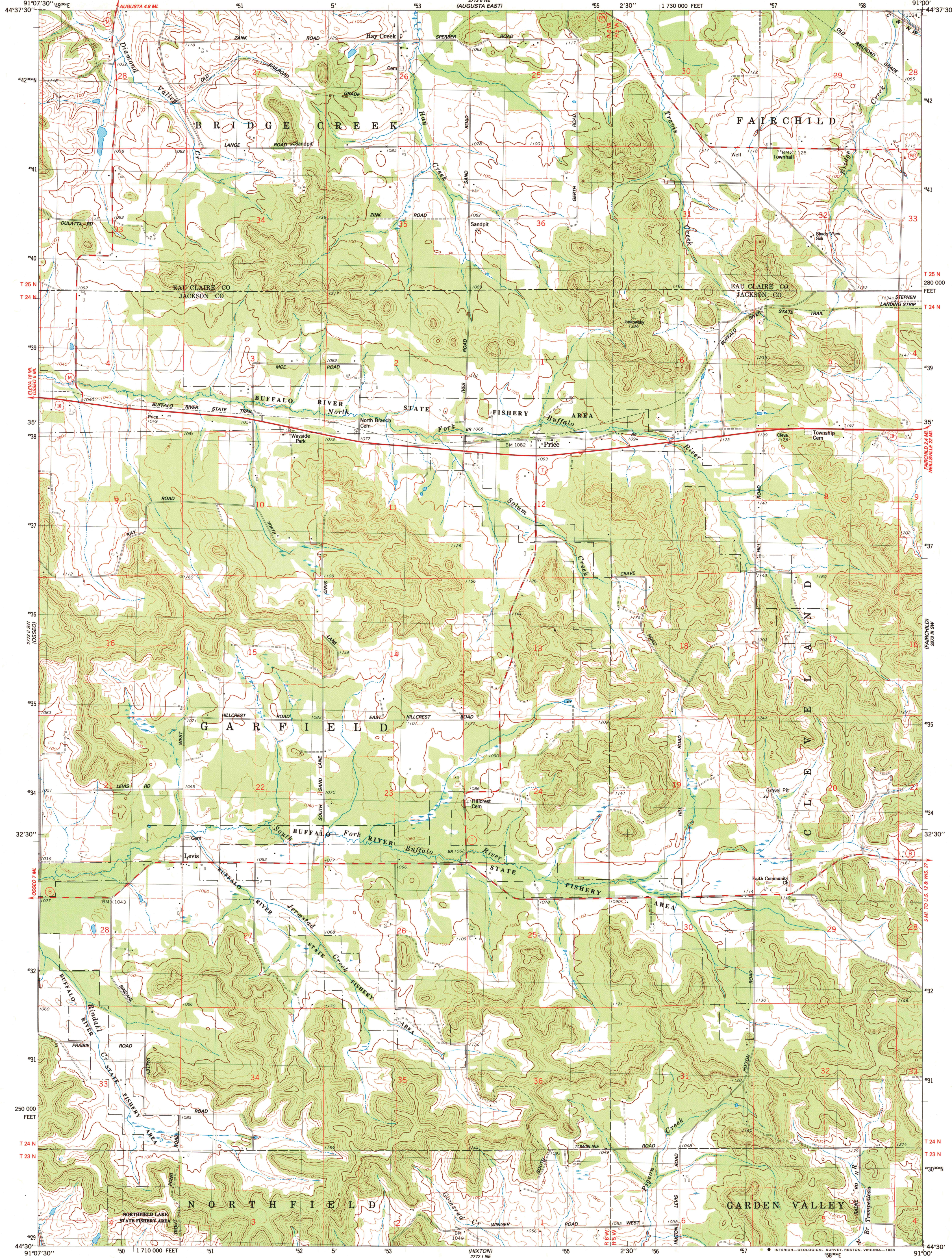
2721 11 W  
AUGUSTA WEST

UNITED STATES  
DEPARTMENT OF THE INTERIOR  
GEOLOGICAL SURVEY

STATE OF WISCONSIN  
DIVISION OF HIGHWAYS  
GEOLOGICAL AND NATURAL HISTORY SURVEY

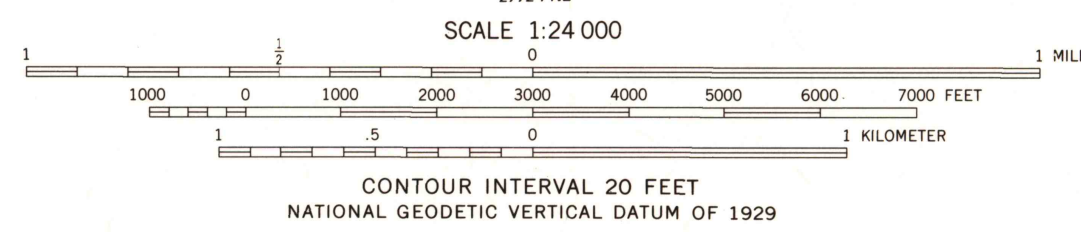
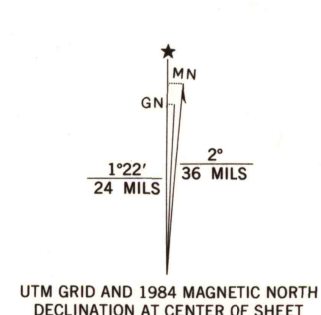
PRICE QUADRANGLE  
WISCONSIN  
7.5 MINUTE SERIES (TOPOGRAPHIC)  
SE/4 OSSBO 15' QUADRANGLE

2723 11 W  
AUGUSTA WEST



PIGEON FALLS  
2722 11 W

Maped, edited, and published by the Geological Survey  
in cooperation with the Wisconsin Division of Highways  
and Wisconsin Geological and Natural History Survey  
Control by USGS and NOS/NOAA  
Topography by photogrammetric methods from aerial photographs  
taken 1966. Revised from aerial photographs taken 1982  
Field checked 1984. Map edited 1984  
Projection and 10,000-foot grid ticks: Wisconsin coordinate  
system, central zone (Lambert conformal conic)  
1000-meter Universal Transverse Mercator grid, zone 15  
1927 North American Datum  
To place on the predicted North American Datum 1983,  
move the projection lines 7 meters north and  
12 meters east as shown by dashed corner ticks  
There may be private inholdings within the boundaries of  
the National or State reservations shown on this map  
Fine red dashed lines indicate selected fence and field lines where  
generally visible on aerial photographs. This information is unchecked



ROAD CLASSIFICATION  
Primary highway, hard surface  
Secondary highway, hard surface  
Unimproved road  
Interstate Route  
U. S. Route  
State Route

PRICE, WIS.  
SE/4 OSSBO 15' QUADRANGLE  
44091-E1-TF-024

1984

DMA 2773 11 SE-SERIES V861

RETURN TO:  
USGS AND HISTORICAL MAP ARCHIVES