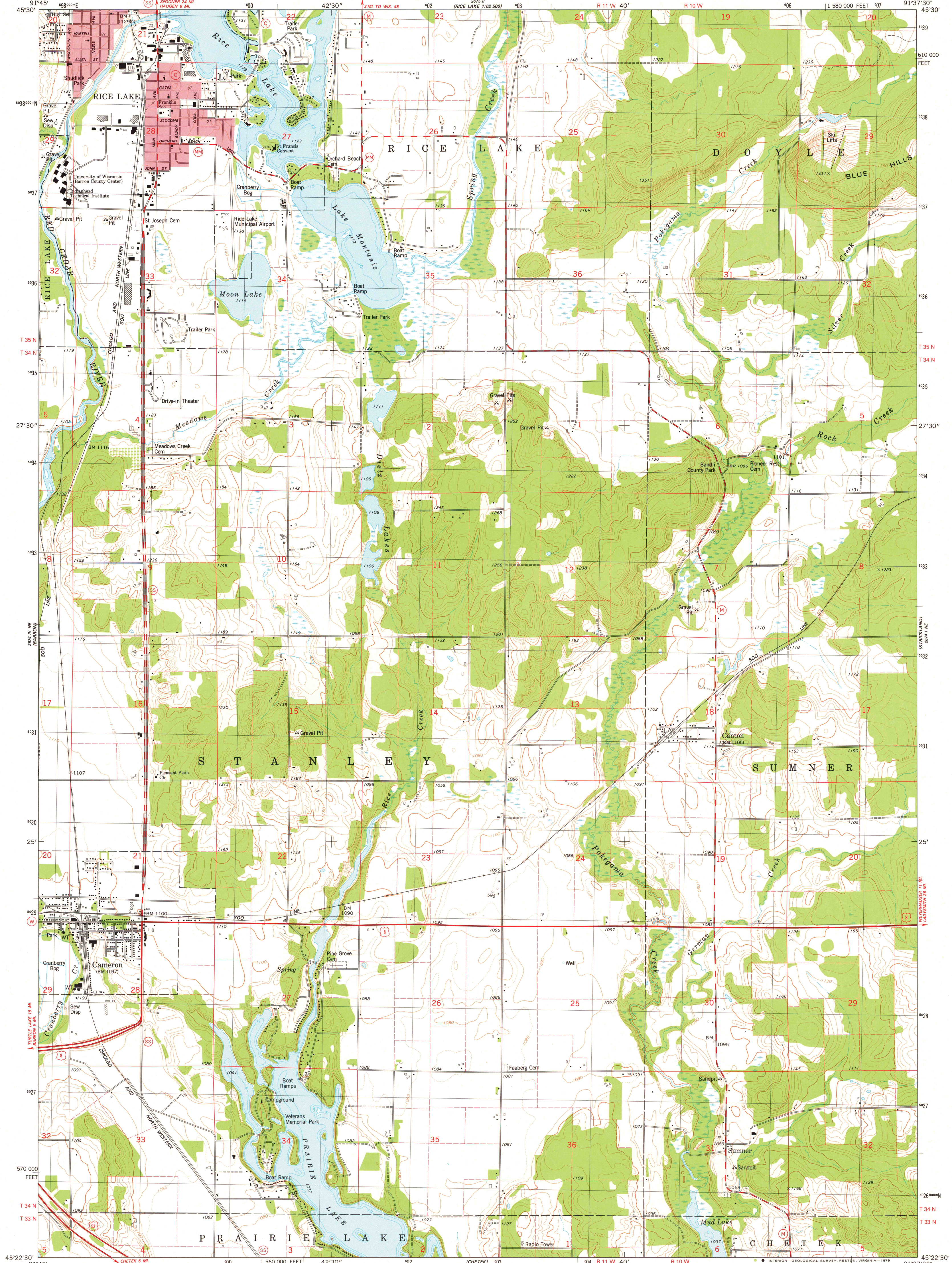


UNITED STATES
DEPARTMENT OF THE INTERIOR
GEOLOGICAL SURVEY

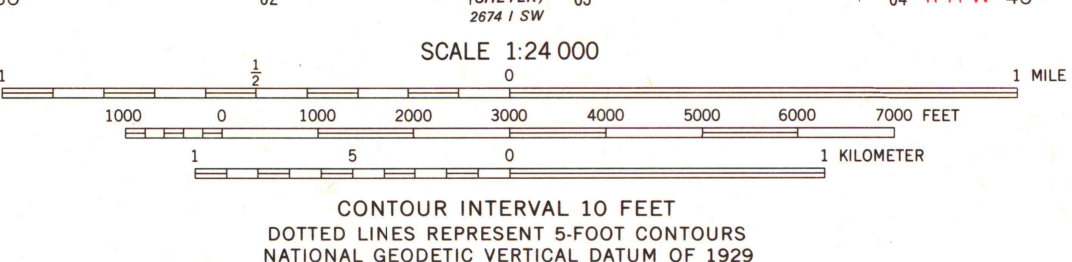
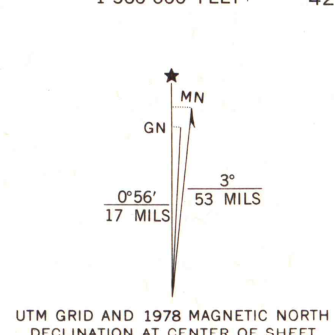


STATE OF WISCONSIN
DIVISION OF HIGHWAYS
GEOLOGICAL AND NATURAL HISTORY SURVEY

RICE LAKE SOUTH QUADRANGLE
WISCONSIN-BARRON CO.
7.5 MINUTE SERIES (TOPOGRAPHIC)
NW/4 CHETEK 15' QUADRANGLE
NW/4 CHETEK 15' QUADRANGLE



Mapped, edited, and published by the Geological Survey
in cooperation with the Wisconsin Division of Highways
and Wisconsin Geological and Natural History Survey
Control by USGS and NOS/NOAA
Topography by photogrammetric methods from aerial photographs
taken 1975. Field checked 1976. Map edited 1978
Hydrography compiled from information furnished by
Wisconsin Department of Natural Resources
Projection and 10,000-foot grid ticks: Wisconsin coordinate
system, central zone (Lambert conformal conic)
1000-meter Universal Transverse Mercator grid, zone 15
1927 North American datum
Red tint indicates areas in which only landmark buildings are shown
Fine red dashed lines indicate selected fence and field lines where
generally visible on aerial photographs. This information is unchecked



ROAD CLASSIFICATION
Primary highway, hard surface
Secondary highway, hard surface
Light-duty road, hard or improved surface
Unimproved road
Interstate Route
U.S. Route
State Route

RICE LAKE SOUTH, WIS.
NW/4 CHETEK 15' QUADRANGLE
N4522.5-W9137.5/7.5

1978
AMS 2674 1 NW-SERIES V861

MAP AND AIR PHOTO
LIBRARY

SEP 17 1979

University of Wisconsin
Madison

1978
copy
1-1