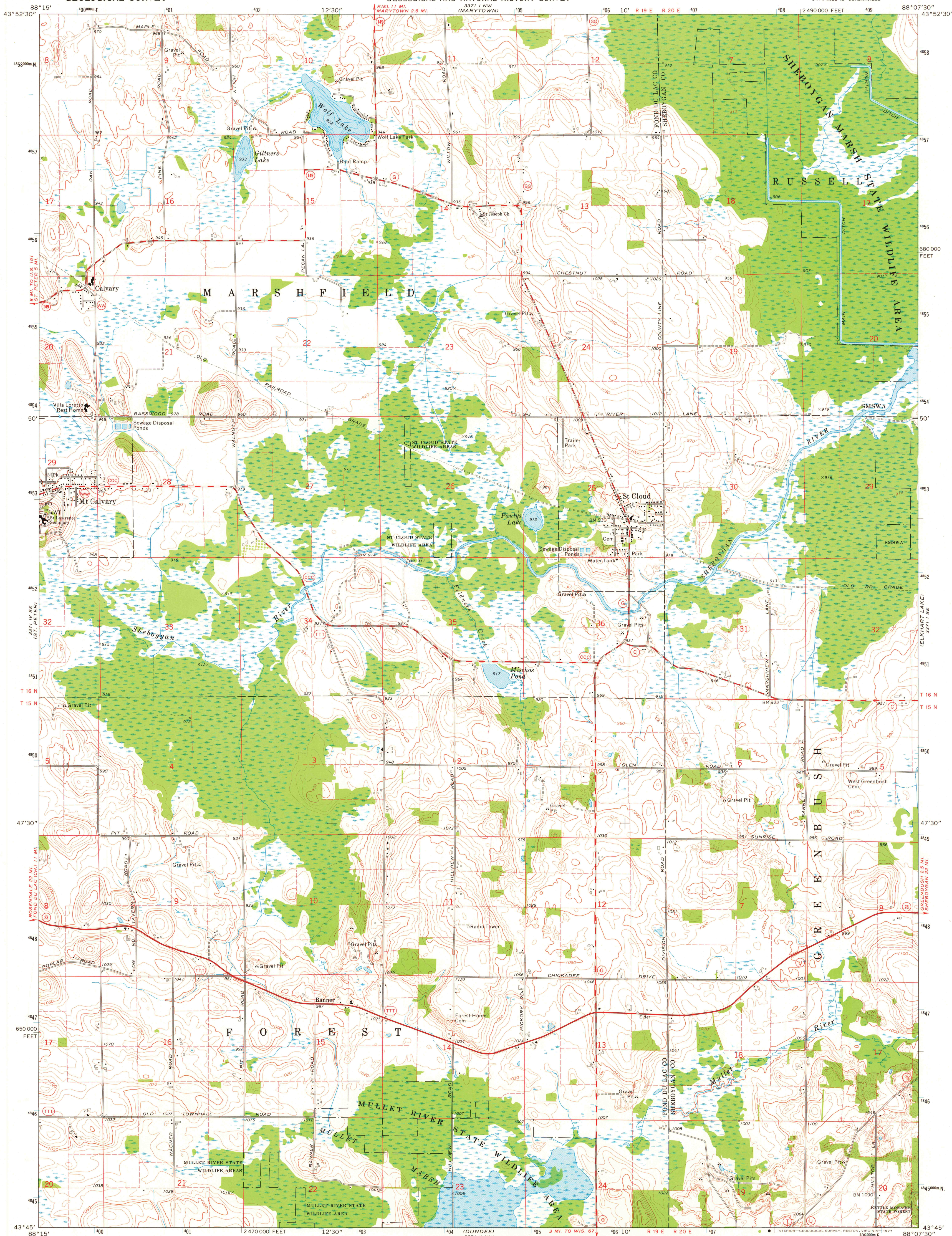


UNITED STATES  
DEPARTMENT OF THE INTERIOR  
GEOLOGICAL SURVEY

STATE OF WISCONSIN  
DIVISION OF HIGHWAYS  
GEOLOGICAL AND NATURAL HISTORY SURVEY

ST. CLOUD QUADRANGLE  
WISCONSIN  
7.5 MINUTE SERIES (TOPOGRAPHIC)



Mapped, edited, and published by the Geological Survey  
in cooperation with the Wisconsin Division of Highways  
and Wisconsin Geological and Natural History Survey

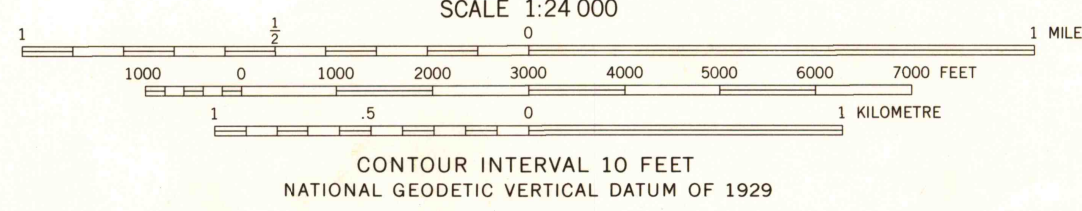
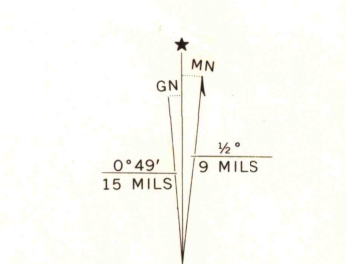
Control by USGS and NOS/NOAA

Topography by photogrammetric methods from aerial  
photographs taken 1973. Field checked 1974

Hydrography compiled from information furnished by  
Wisconsin Department of Natural Resources

Projection and 10,000-foot grid ticks: Wisconsin coordinate  
system, south zone (Lambert conformal conic)  
1000-metre Universal Transverse Mercator grid ticks,  
zone 16, shown in blue. 1927 North American datum

Fine red dashed lines indicate selected fence and field lines where  
generally visible on aerial photographs. This information is unchecked



THIS MAP COMPLIES WITH NATIONAL MAP ACCURACY STANDARDS  
FOR SALE BY U.S. GEOLOGICAL SURVEY, RESTON, VIRGINIA 22092  
AND WISCONSIN GEOLOGICAL AND NATURAL HISTORY SURVEY, MADISON, WISCONSIN 53706  
A FOLDER DESCRIBING TOPOGRAPHIC MAPS AND SYMBOLS IS AVAILABLE ON REQUEST



ROAD CLASSIFICATION  
Primary highway, hard surface  
Secondary highway, hard surface  
Unimproved road  
Interstate Route  
U. S. Route  
State Route

ST. CLOUD, WIS.  
SW 1/4 KIEL 15' QUADRANGLE  
N4345-W8807.5/7.5

1974

AMS 3371 I SW-SERIES V861

2800  
AUG 15 1977