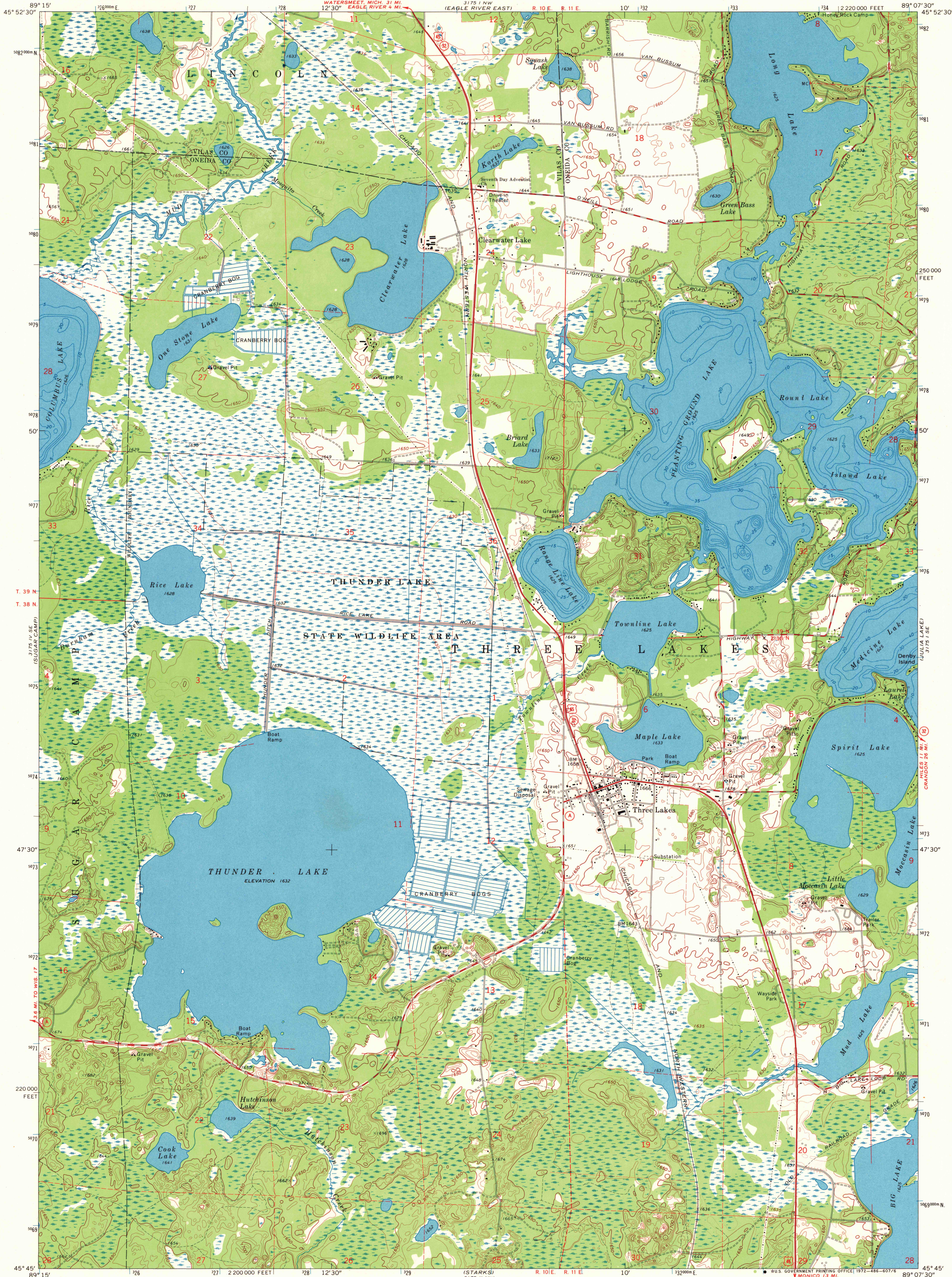


UNITED STATES
DEPARTMENT OF THE INTERIOR
GEOLOGICAL SURVEY

THREE LAKES QUADRANGLE
WISCONSIN
7.5 MINUTE SERIES (TOPOGRAPHIC)
SW 4 THREE LAKES 15' QUADRANGLE



Mapped, edited, and published by the Geological Survey
Control by USGS and USC&GS

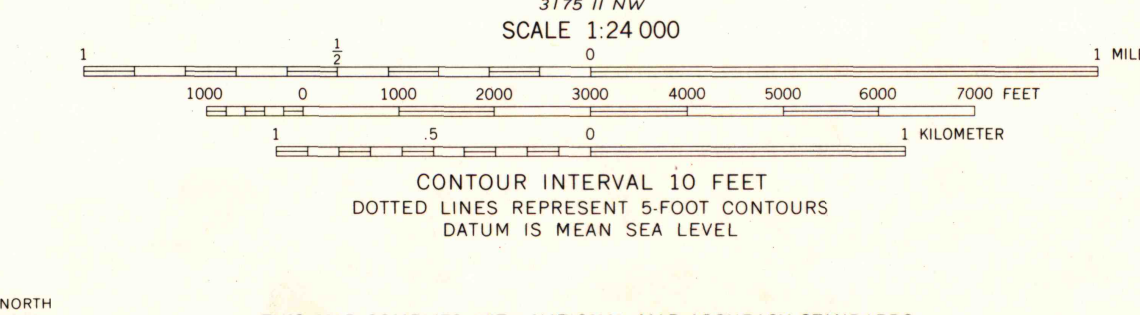
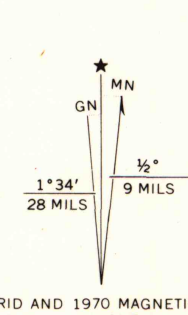
Topography by photogrammetric methods from aerial
photographs taken 1966. Field checked 1970

Depth curves compiled from charts furnished by
Wisconsin Department of Natural Resources

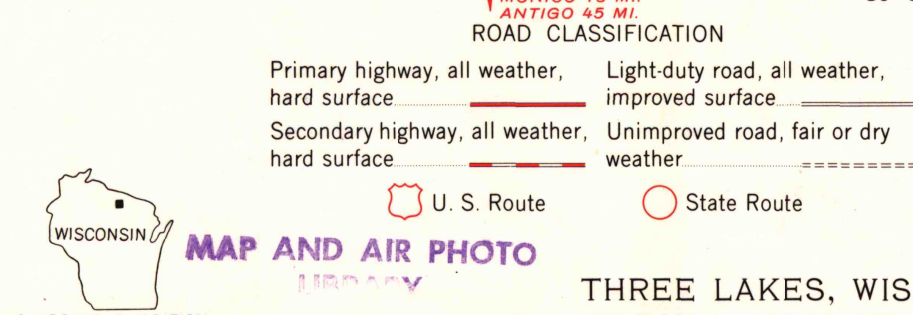
Polyconic projection. 1927 North American datum
10,000-foot grid based on Wisconsin coordinate system, north zone

1000-meter Universal Transverse Mercator grid ticks,
zone 16, shown in blue

Fine red dashed lines indicate selected fence and field lines where
generally visible on aerial photographs. This information is unchecked



THIS MAP COMPLIES WITH NATIONAL MAP ACCURACY STANDARDS
FOR SALE BY U. S. GEOLOGICAL SURVEY, WASHINGTON, D. C. 20242
AND BY THE WISCONSIN GEOLOGICAL AND NATURAL HISTORY SURVEY, MADISON, WISCONSIN 53706
A FOLDER DESCRIBING TOPOGRAPHIC MAPS AND SYMBOLS IS AVAILABLE ON REQUEST



THREE LAKES, WIS.
SW 4 THREE LAKES 15' QUADRANGLE
N4545-W8907.5/7.5
1970
AMS 3175 1 SW-SERIES V861

1970
Copy
1-1